

CAT® MINESTAR™ SYSTEM

HEALTH



INTEGRATED EQUIPMENT HEALTH MANAGEMENT



HEALTH

COMPREHENSIVE HEALTH, EVENT MONITORING AND MAINTENANCE MANAGEMENT.

Health delivers critical event-based machine condition and operating data for your entire fleet. It includes comprehensive equipment health and asset monitoring capabilities, with a wide range of diagnostic and analytic reporting tools.

By identifying many types of potential equipment problems before failure, Health works to minimize unscheduled downtime and productivity loss. Plus, it helps keep your operating costs in check by streamlining service and maintenance management and scheduling.

Health offers universal functionality that works with virtually any mine site asset, including off-highway trucks, wheel loaders, motor graders, wheel dozers, shovels and light-duty vehicles, as well as equipment from other manufacturers.



FLEET



TERRAIN



DETECT



HEALTH



COMMAND



**WITH POWERFUL REPORTING
TOOLS, HEALTH ENABLES TIMELY
MANAGEMENT OF MULTIPLE EQUIPMENT
PARAMETERS, HELPING TO REDUCE
COSTS AND INCREASE AVAILABILITY.**

COMPREHENSIVE HEALTH MONITORING

A fully integrated equipment health monitoring system for mining, Health tracks and records a wide range of critical machine parameters. It enables you to monitor health and operating events as they happen and makes that data available as real-time alerts and in a historical database for fleet-wide trending analysis.



PROACTIVE SERVICE & MAINTENANCE MANAGEMENT

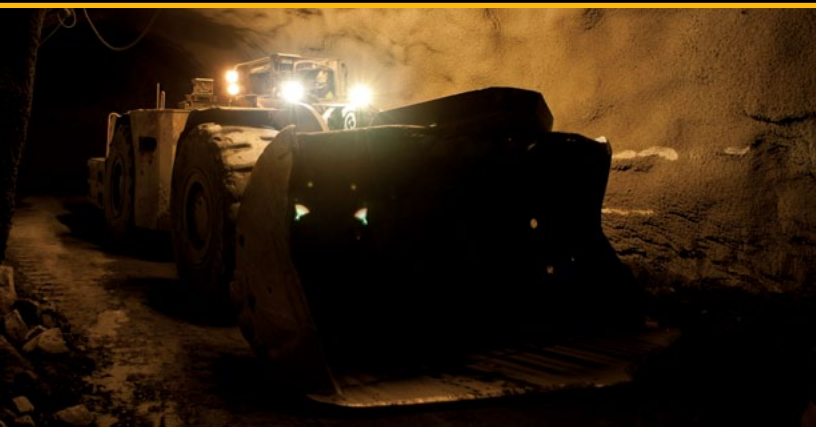
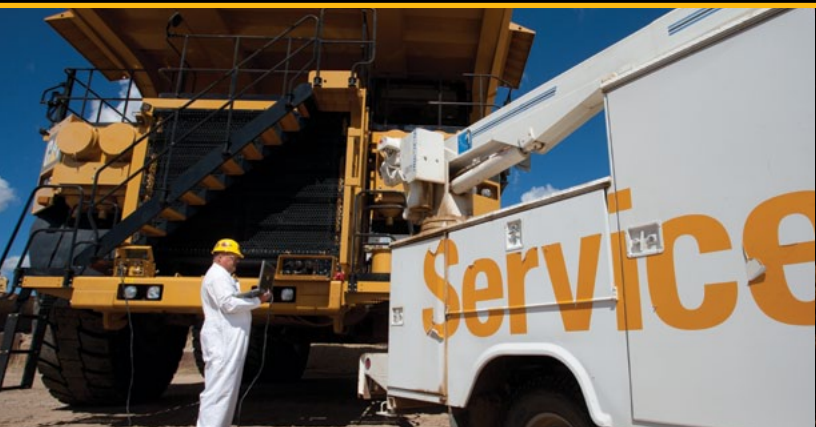
Health includes comprehensive maintenance and service planning capabilities. It enables managers to track what equipment is due for service, schedule repairs and maintenance, see what procedures have been performed and monitor how the machine is performing once it goes back to work.

Analysis tools include easy-to-understand Business Objects reports, which can be customized to meet specific needs. Health data may also be integrated into a production database for expanded analysis and reporting.

HEALTH GIVES YOU REAL-TIME INFORMATION THAT WORKS TO:

- Prevent component failures
- Extend component life
- Reduce unexpected breakdowns
- Monitor equipment health across your fleet
- Plan for service procedures around your production schedule
- Improve overall maintenance practices

Health can also help identify issues beyond the equipment, including problem areas within the mine site itself. With Global Navigation Satellite System (GNSS) tracking capabilities, it generates reports showing where health and operational alerts occur. That can help you spot site problems—such as suboptimal haul road conditions—that affect machine health, availability and asset life.



MAINTENANCE & SERVICE TRACKING

Health helps reduce cost by ensuring that preventive maintenance services are performed on time, keeping your equipment in top condition and helping to avoid costly failures and unexpected shutdowns. Plus, it makes timely service, maintenance and status information instantly available across your entire operation, enabling you to better plan service and maintenance procedures around your production schedules.

REAL-TIME ALERTS

If an unforeseen problem arises, Health provides equipment and service managers with real-time alerts that help them take immediate and appropriate action. It then shares this information with other Cat[®] MineStar[™] System capability sets, enabling your operation to quickly adjust to changes in equipment status and maintain the highest possible productivity.

CAT[®] MINESTAR[™] SYSTEM

Health is one of a range of capability sets within Cat MineStar System, the industry's broadest, most thoroughly integrated mine operations and mobile equipment management system.

The Health capability set shares data seamlessly with other Cat MineStar System technologies as part of a comprehensive, next-generation mining management system. Cat MineStar System capability sets can be used individually or in combination to create an integrated technology system, scalable and configurable to the needs of mining operations of any size, type or complexity.

With the ability to track, monitor and manage all types of assets, from fleet-level overviews down to individual machine details, Cat MineStar System gives you the in-depth information you need to manage all mining operations more safely, efficiently and productively.

For more information visit cat.com/miningtechnology



FLEET



TERRAIN



DETECT



HEALTH



COMMAND

PEDJ0114

©2011 Caterpillar | All Rights Reserved | Printed in USA
CAT, CATERPILLAR, their respective logos, "Caterpillar Yellow" and the "Power Edge" trade dress, as well as corporate and product identity used herein, are trademarks of Caterpillar and may not be used without permission.

