

# Used Equipment Machine Inspection

Dealer Process

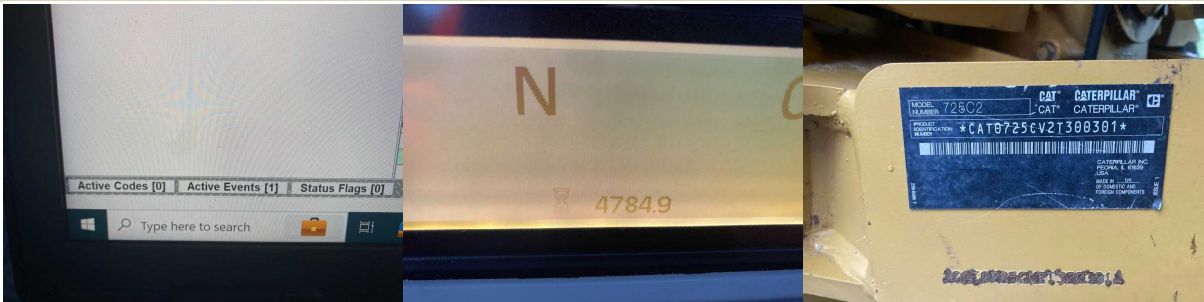
● 0 ● 2 ● 11 ● 0

Inspection Number	15704385	Customer No	2969589938
Serial Number	2T300301	Customer Name	FINNING USED EQUIPMENT
Make	CATERPILLAR	Completed On	1/12/2024 12:51:38 PM
Model	725C2	Inspector	John Hardwick
Equipment Family	Articulated Truck	PDF Generated On	1/12/2024
Asset ID	HCE730695	SMU	4784 Hours
Location	Field Farm Northwich Road, WA4 4LJ, England, United Kingdom	Coordinates	0, 0, 0
Year	2017		
Inspector			

## General Info & Comments

● **General info/Comments** NORMAL

Comments: Machine in good condition for age and hours.  
 There are no active fault codes on the PSRPT.  
 Last recorded service was at 4404 Hrs.  
 Last recorded oil sampling was at 4390 Hrs results ok.



Serial No.	Asset ID	Model	Reg No.	Customer	Job No.	Inspected By	Completed	Time	Start	End	Result	Notes
2T300301	HCE730695	725C2	WY1201	FINNING USED EQUIPMENT	15704385	JOHN HARDWICK	2024-01-12	12:51:38	12:51:38	12:51:38	OK	



2T300301\_PSRPT\_2024-01-11\_08.43.48.pdf



HISTORY.xls

**Machine Features**

- **1.1 Emissions Label** NO ACTION



- **1.2 Buckets/Attachments** NO ACTION

Comments: Skip in operational condition with the expected minor dents etc.

- **1.3 Machine Features/Aftermarket Additions** NO ACTION

Comments: SBI fitted and working.

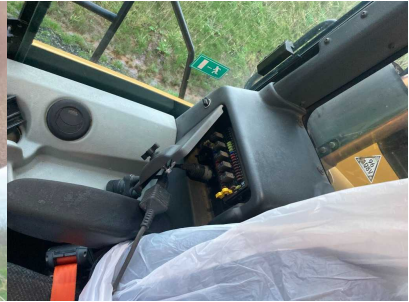
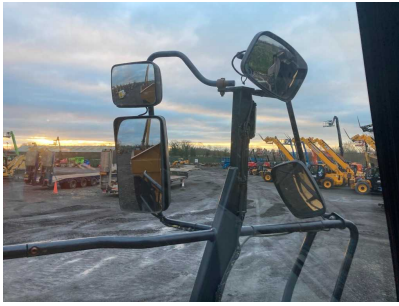
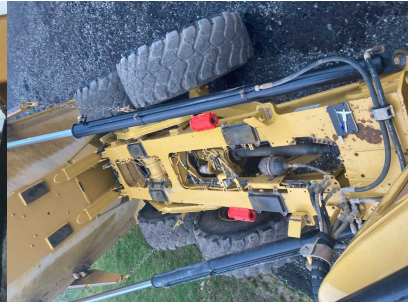
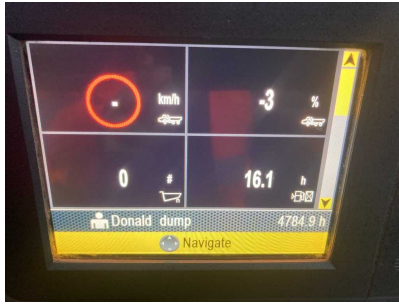
**Walk Around Inspection**

- **2.1 General condition** NO ACTION

Comments: Machine in overall good condition with no major general dents and scratches.











**2.2 Leaks/Faults** *NO ACTION*

Comments: No active fault codes on the PSRPT and no leaks seen.

**2.3 Damage** *ATTENTION*

Comments: Front L/H and R/H mudflaps missing.





● **2.4 Wear**

*NO ACTION*

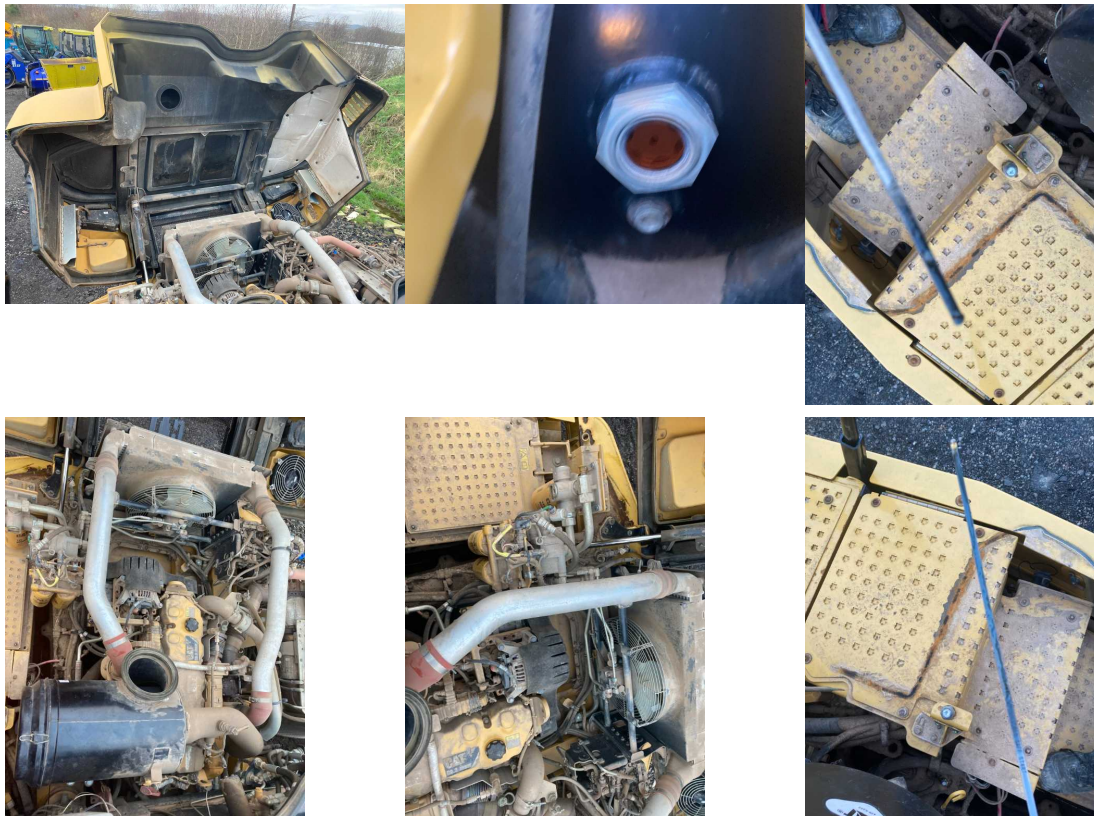
Comments: Expected wear and tear around the machine no major issues seen.

**Drivetrain and Hydraulics**

● **3.1 Engine**

*NO ACTION*

Comments: Engine starts and runs with no issues seen or heard. Levels ok.



● **3.2 Transmission**

*NO ACTION*

Comments: Machine moves as expected.

● **3.3 Axles/Drive**

*NO ACTION*

Comments: No issues seen with the final drives.

● **3.4 Hydraulics**

*ATTENTION*

Comments: Hydraulics work as expected with no issues seen but level could do with topping up.



**Tyres/Undercarriage**

● **4.1 Tyres**

*NO ACTION*

Comments: Tyres in a fair condition with some cracks and chunks out but not major. There is between 35% and 44% wear remaining on the tyres.

- F/L 44%.
- C/L 35%.
- R/L 35%.
- F/R 44%.
- C/R 38%.
- R/R 35%.



**4.2 Undercarriage**