

# Used Equipment Machine Inspection

Dealer Process

● 0 ● 2 ● 11 ● 0

Inspection Number	16850920	Customer No	2969589938
Serial Number	GZ901046	Customer Name	FINNING USED EQUIPMENT
Make	CATERPILLAR	Completed On	4/9/2024 3:43:17 PM
Model	D6	Inspector	John Hardwick
Equipment Family	Medium Track Type Tractor	PDF Generated On	4/9/2024
Asset ID	HCE741773	SMU	4045 Hours
Location	Radiosite Tower At United Utilities Road One, CW7 3QD, England, United Kingdom	Coordinates	0, 0, 0
Year	2021		
Inspector			

## General Info & Comments

● **General info/Comments** NORMAL

Comments: Machine in good condition overall.  
 No active fault codes on the PSRPT.  
 Last serviced at 3972 Hrs.  
 Last oil sampling was at 3972Hrs.



Image Comment(s):No Active codes.

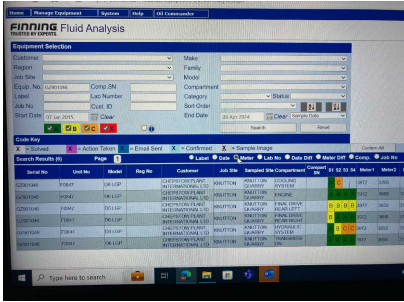


Image Comment(s):Oil History.



GZ901046 Percent Worn Chart(Metric) 2023-12-06.pdf



GZ901046 Simplified (Metric) 2023-12-06.pdf



GZ901046\_PSRPT\_2024-04-08\_10.06.53.pdf



HISTORY.xls

**Machine Features**

● **1.1 Emissions Label**

*NO ACTION*



● **1.2 Buckets/Attachments**

*ATTENTION*

Comments: Blade has a hole in it.



1.3 Machine Features/Aftermarket Additions

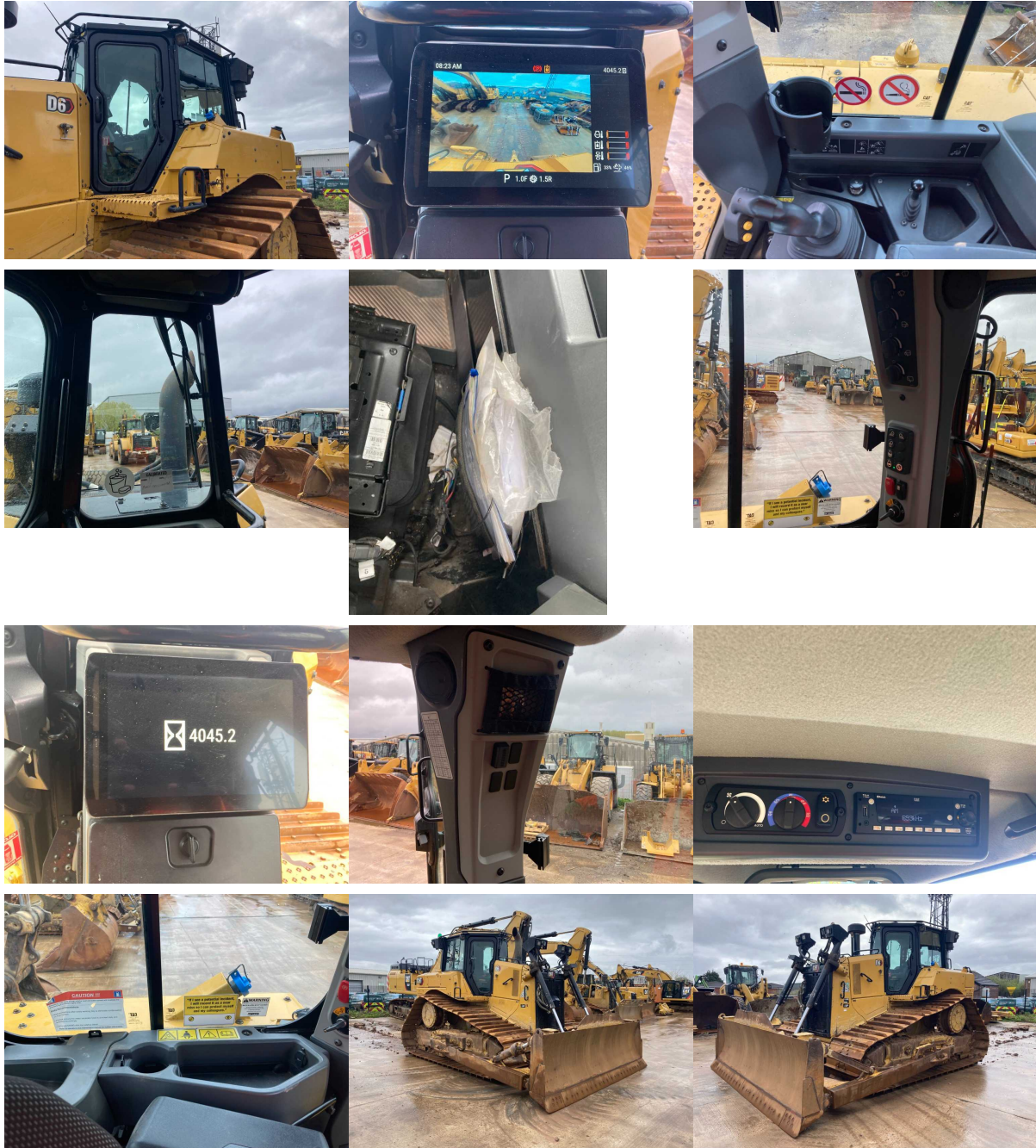
NO ACTION

Walk Around Inspection

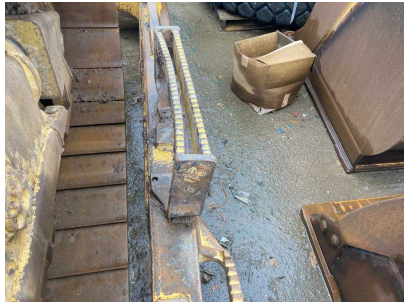
2.1 General condition

NO ACTION

Comments: Machine in good condition overall with only minor damage.







● **2.4 Wear**

*NO ACTION*

Comments: Expected non excessive and wear around the machine for hours worked.  
Approx 2 / 3mm movement in the blade tilt cylinder and brace arm.

**Drivetrain and Hydraulics**

● **3.1 Engine**

*NO ACTION*

Comments: Engine works as expected with no issues seen.  
Levels ok.



● **3.2 Transmission**

*NO ACTION*

● **3.3 Axles/Drive**

*NO ACTION*

Comments: Machine moves as expected.

### 3.4 Hydraulics

NO ACTION

Comments: Hydraulics work as expected.  
level a little low.



## Tyres/Undercarriage

### 4.1 Tyres

### 4.2 Undercarriage

NO ACTION

Comments: Undercarriage in good condition with approx 60% wear remaining overall.  
Carrier rollers are approx 44% worn.  
Track rollers are approx 45% worn.  
Links are approx 44% worn.  
Bushes are approx 32% worn.  
Sprocket / Gear is approx 27 % worn.  
Pads are approx 43% worn.





