



IT'S THE CAT[®] OF UTVS.

Introducing the first ever Cat Utility Vehicle.

FEATURES AND SPECIFICATIONS

MODEL CUV82 – GAS-POWERED

BUILT FOR IT.™

1-888-Finning | Finning.com/utv
346-6464



**UTILITY.
TOUGHNESS.
VERSATILITY.**

It's the UTV redefined.

CUV82. Attributes at a glance.

Heavy lifting. Hard working. Easy riding.

- > 1000 lb 'no-sweat' carrying capacity
- > Specifically designed to minimize noise, vibration and ride harshness
- > Side-by-side rider comfort optimized with ample leg and headroom

Ease of operation. Optimized.

- > Standard electric power steering for superior handling
- > Easy maneuverability on rugged terrain at speeds up to 72 km/h. (45 mph)
- > Pre-wired for quick do-it-yourself accessory installation
- > Over 50 easy-install accessories available

Service and maintenance made simple.

- > Advanced on-board diagnostics for more efficient troubleshooting.
- > Factory spec full-service capability and access through Finning



CUV82 SPECIFICATIONS



ENGINE

Fuel type	Gasoline
Engine size/type	50 hp, 0.8 L, 3-cylinder
Cooling	Liquid with fan
Safety standard	ANSI/ROHVA 1-2014

DRIVELINE

Top speed	Over 72.4 km/h (45 mph) with 40.2 km/h (25 mph) configurable speed setting
Transmission	CVT
Drive system	2WD/4WD/4WD lock

DIMENSIONS

Rear cargo dimensions (L x W x H)	1403 mm x	55.25 in x
	1054 mm x	41.5 in x
	299 mm	11.75 in
Wheelbase	2159 mm	85 in
Overall vehicle size (L x W x H)	3200 mm x	126 in x
	1600 mm x	63 in x
	1880 mm	74 in
Ground clearance	267 mm	10.5 in
Seat height	813 mm	32 in
Floor height	311 mm	12.25 in
Track width	1575 mm	62 in
Curb weight (wet)	729.4 kg	1,608 lb

ELECTRICAL

Instrument gauge	Digital
Headlight	Halogen
Tail light	Dual LED
Location for secondary battery	Yes

CAPACITY

Seat (capacity) – front	2	
Fuel tank capacity	37.8 L	10 gal
Towing	907.2 kg	2,000 lb
Rear cargo (capacity)	453.6 kg	1,000 lb
Rear cargo (type)	Steel	
Box lining	Paint	

SUSPENSION

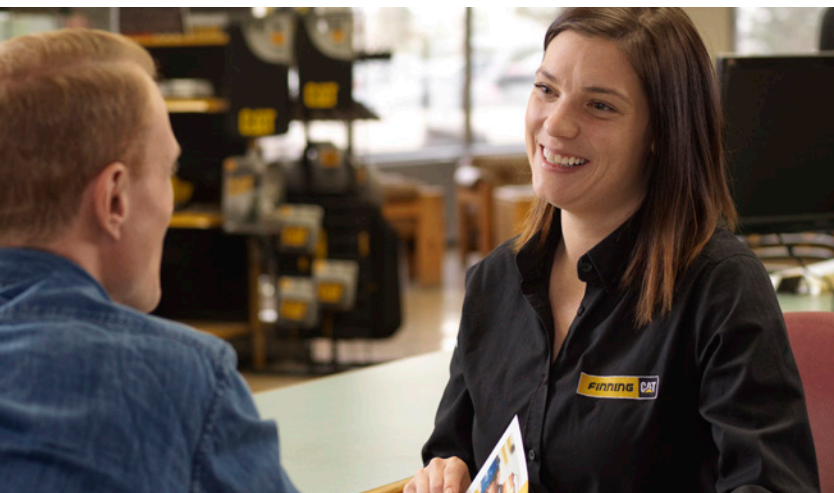
Tire type	Utility
Tire size	25 x 10.5-12
Wheel	Steel
Suspension type (front)	A-Arm – independent
Suspension type (rear)	A-Arm – independent
Brakes	Single and dual piston disc brakes
Emergency/park brake	Parking gear
Sway bar (front)	Standard

STEERING/SHIFTING

Steering	Electric power assist
Shifter location	Steering column
Shifter type	Mechanical

INTERIOR

Seat belt	Three-point
Seat	Cut and sewn
Side restraints	Shoulder bar with door
Behind seat storage	Yes



Unbeatable service, support, sound advice and more from Finning.

The Cat CUV82 is truly one-of-a-kind. And everything you need to keep it working, day-in and day-out is the kind of support and service you can expect from Finning. From advice on accessories to maintenance tips and solutions to help keep your machine – and you – in business, we're always working to ensure you are too.

Toughness is 'standard'. To meet your toughest demands.

STANDARD EQUIPMENT

POWER TRAIN

- > 50 hp, 0.8 L, 3-cylinder gasoline engine
- > Transaxle with high, low, neutral, reverse and park
- > Belt driven CVT transmission
- > 2WD/4WD/4WD lock drive settings
- > Fuel pump
- > Air cleaner, 2 stage
- > Radiator

ELECTRICAL

- > Electric assist power steering
- > Instrument gauge with ground speed, engine speed, hours, odometer, battery voltage, engine temperature, fuel level and advanced diagnostics
- > Headlights with high/low beams
- > Rear tail lights
- > Alternator
- > Horn

SUSPENSION

- > Four-wheel independent suspension
- > Sway bar (front – standard, rear – optional)
- > Dual rate springs

BRAKES

- > Engine braking
- > Four-wheel disc brakes with dual reservoir

FRAMES

- > All steel cargo bed with manual dump
- > Safety standard compliant ROPS

TIRES

- > Standard utility tires with steel rims

OPERATOR ENVIRONMENT

- > Two seats
- > Three-point seat belts
- > Document holder
- > Center console with equipment holder
- > Two doors
- > Beverage holder
- > Glove box
- > Lower dash storage
- > Column shifter
- > Behind seat storage
- > Adjustable tilt steering wheel and shifter
- > Adjustable driver's seat
- > Door pockets

OTHER

- > 40.2 km/h (25 mph) configurable speed setting

OPTIONS AND ACCESSORIES

DOOR OPTIONS

- > Plastic full doors
- > Canvas front doors

FRONT WINDSHIELD OPTIONS

- > Poly windshield
- > Poly bottom half-windshield
- > Wiper/washer kit

HEATING AND COOLING OPTIONS

- > Heater/defrost kit
- > Block heater

LIGHTING OPTIONS

- > Beacon light
- > Interior dome light kit
- > Work lighting kit

MIRROR OPTIONS

- > Side mirror
- > Rearview mirror

REAR WINDSHIELD OPTIONS

- > Poly rear panel
- > Glass rear panel
- > Sliding window rear panel
- > Rear screen

GUARD OPTIONS

- > Brush guard
- > Grill guard
- > Rear bumper
- > Nerf bar steps
- > Headache rack
- > Front arm guards
- > Rear tail light guard
- > Front heavy duty bumper
- > Rear arm guards

SAFETY AND SECURITY OPTIONS

- > Flag rod and holder
- > Beacon
- > Product Link™ 240
- > Backup alarm
- > Battery shut off switch

POWER OPTIONS

- > Accessory battery
- > Electro-hydraulic power bed dump

TOWING OPTIONS

- > Front winch

STORAGE OPTIONS

- > Middle console storage
- > Under seat storage

ROOF OPTIONS

- > One piece roof
- > Two piece premium roof
- > Smoked PC roof
- > Roof liner
- > Bimini roof

TIRE/WHEEL OPTIONS

- > Off-road tires
- > 14 inch aluminum wheel

GENERAL INTERIOR OPTIONS

- > Overhead console
- > Rubber box mat

OTHER OPTIONS

- > Snow plow
- > Rear bumper
- > Heavy duty front bumper
- > Grill guard
- > Brush guard
- > Rear tail light guards
- > A-Arm guards
- > Tow hook loop
- > Gun scabbard mount
- > Gun scabbard add-on kit
- > Mud flaps

CUV82. AN INCOMPARABLE GAS-POWERED UTV FROM CAT.

See it. Test it. Own it. Call 1-888-Finning or visit Finning.com/utv

