

# REBUILD IT RIGHT



PRECIOUS METALS ENGINE REBUILD KITS







## THE RIGHT PARTS, RIGHT NOW.

Your Cat® machine's engine is built for a second, even third, life. So rebuild it right, with the top performance and long life only genuine Cat parts can deliver. And now, with our Precious Metals Engine Rebuild Kits, everything you need to do it right is available in easy-to-order, cost-effective kits that get you back to work fast.

With Bronze, Silver, Gold and Platinum, you're assured every part meets rigid Cat quality standards. Choose the appropriate kit level, plus a variety of suggested options to obtain all the parts necessary to complete your engine rebuild.

- **Get more for your money.** Prepackaged kit options feature improved pricing and contain everything you need for a cost-effective repair solution.
- **Count on quality.** Genuine Cat engine components are manufactured to precise specifications and engineered for a reliable rebuild, boosting productivity and minimizing downtime. They work together as a system to give your machine new life.
- **Save time and effort.** Because there's no need to select individual parts for the repair, you always get exactly what you need—no more, no less. That simplifies ordering and handling, shortens turnaround time and reduces the chance for errors.



## THE RIGHT COVERAGE.

### Equipment Protection Plan

- Reduces your risk from machine failure
- Protects from the cost of failure due to defects in material and/or workmanship
- Cat Dealers can review options to help you decide how much and what types of equipment servicing is right for your business
- Understanding and locking in these costs up front can help ease the decision process







# ALL YOU NEED TO DO IT RIGHT.

Precious Metals Engine Kits come in four levels: Bronze, Silver, Gold and Platinum.  
Whatever level you choose, you'll find unmatched value as compared with competitive kits.

	Typical Engine Rebuild Kit Consist Introduced at Each Level*	Genuine Cat Rebuild Kits	Non-Genuine Aftermarket Kits*	Why is this part included in the Cat Engine Rebuild Kit & not by competitors?
Bronze Level	Camshaft Bearings	✓	✓	
	Drive Gear Bushings	✓	✓	
	Rear Structure Gasket Set	✓	✓	
	Front Structure Gasket Set	✓	✓	
	Head Gasket Set	✓	✓	
	Oil Pan Gasket	✓	✓	
	Fuel Injector Gasket Set	✓		Re-use of injector seals may cause fuel dilution and additional damage to engine
	Exhaust Manifold Sleeves	✓		Debris from unexpected failure may damage turbo and internal cylinder components
	Oil Pan Isolator Assemblies	✓		Replacement ensures compliance with Emissions and Noise Regulations
	Exhaust Manifold High Temperature Studs	✓		Maximizes reliability
	Thermostat	✓		To ensure proper cooling and to prevent engine overheating
	Valve Cover Gear Seal	✓		Replaced to prevent any leaks from when seal was removed
	Advanced Efficiency Oil Filter	✓		Ensures your significant investment is protected
	Advanced Efficiency Fuel Filter	✓		Ensures your significant investment is protected
	Manifold and Turbo Lockouts	✓		Locknuts are not reusable
Silver Level	Liners	✓	✓	
	Piston Crowns	✓	✓**	Recommended by Cat's engineers to maximize performance and reliability
	Piston Body Skirts	✓	✓	
	Rings	✓	✓	
	Wrist Pins	✓	✓	
	Liner Seals	✓	✓	
Gold Level	Liners	✓**	✓	
	Piston Crowns	✓**	✓***	Recommended by Cat's engineers to maximize performance and reliability
	Piston Body Skirts	✓**	✓	
	Rings	✓**	✓	
	Wrist Pins	✓**	✓	
	Liner Seals	✓**	✓	
	Connecting Rods	✓**		Recommended by Cat's engineers to maximize performance and reliability
Platinum Level	Complete Reman Cylinder Head	✓		Cat Reman parts provide same-as-new performance, improved turnaround time and reliability at fraction of the cost of buying new parts
	Complete Set of Reman Fuel Injectors	✓		
	Reman Water Pump	✓		
	Reman Oil Pump	✓		

\* Actual consists may vary according to Engine Model and product options and attachments associated with your engine arrangement  
\*\* As compared with the Silver Level, the Gold Level not only includes Reman Connecting Rods, the cylinder packs are pre-assembled, saving additional labor hours  
\*\*\* Aftermarket kits typically require piston crowns to be ordered separately from the kit, depending on engine sales model and kit manufacturer



# FIND THE LEVEL THAT'S RIGHT FOR YOU.

Precious Metals Engine Rebuild Kits cover a wide range of machine models and applications and are backed with a strong parts warranty. You can purchase kits over the counter or through service at any authorized Cat Dealer location. See your Cat Dealer for additional parts and service and coverage options.

**Choose the level that's right for you based on your rebuild requirements. Depending on the machine model and engine serial number, the Precious Metals Order Matrix will direct you to the correct part number and any additional components as needed.**

## BRONZE LEVEL

The basic building block for all four levels, the Bronze Precious Metals Level includes all the parts necessary for a low-cost repair, and additional value-added components like rod bearings. It also includes components you might not think about replacing—such as fasteners, studs, bearings and thermostat—that could lead to costly failures and unplanned downtime if not replaced, and the required gaskets and seals to reassemble the engine (out-of-frame rebuild kit).

## GOLD LEVEL

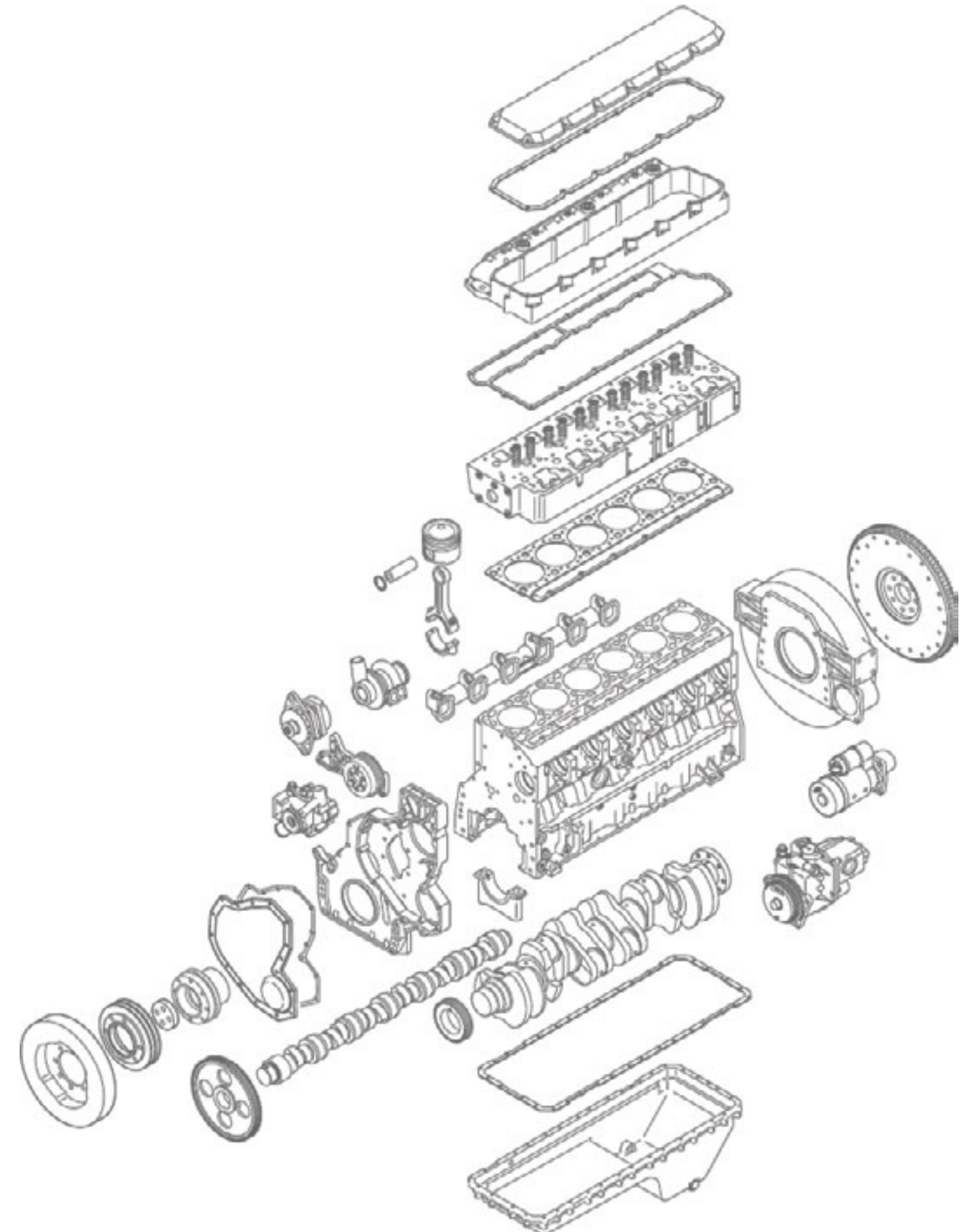
Building on the Bronze Level, a basic engine rebuild that gets you back to work quickly and affordably. The Gold Level includes: Cat Reman Cylinder Liner pack assemblies—pre-assembled with rods, pistons, rings and liners—saving four to six hours labor compared to Silver Level.

## SILVER LEVEL

Building from the Bronze Level, a cost-effective option for a basic rebuild, the Silver Level includes: new pistons, liners, wrist pins, rings, retainers and a rodless, unassembled cylinder pack.

## PLATINUM LEVEL

The Platinum Level is the most complete rebuild option; designed to maximize the built-in second and third life of your engine.



## CHOOSE THE RIGHT PARTNER.

As a Cat customer, you can take advantage of one of the most powerful support systems in the world. Cat Dealers set the standard for parts and service support—from extensive parts inventories to preventive maintenance, diagnostics and emergency service—all backed by expert technicians who understand your service needs and are ready to meet them.

Talk to your Cat Dealer about the Precious Metals Engine Rebuild Kit that's right for your needs—and other equipment, parts and service solutions that can help you meet your productivity, performance and cost targets.

Learn more at [parts.cat.com/rebuildkits](https://parts.cat.com/rebuildkits).





