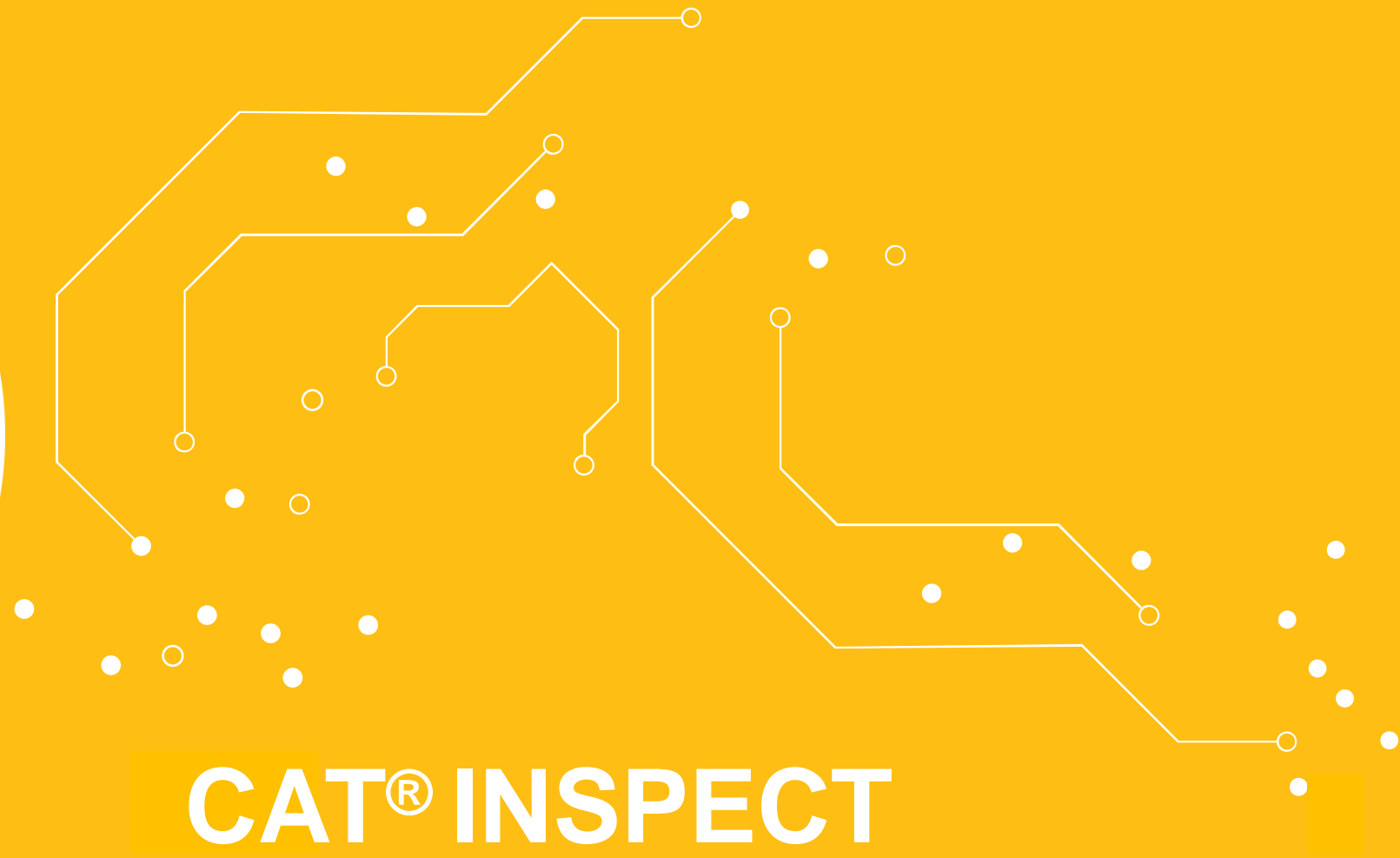


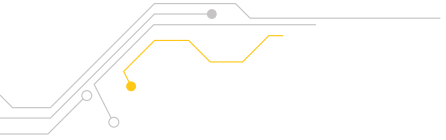
[+]



CAT[®] INSPECT

QR Code Training

QR CODES IN CAT INSPECT



The **CAT INSPECT** app turns your mobile device into a smart machine inspection tool eliminating the need for paper inspections. Download both Caterpillar and user-defined inspections to rate asset condition, take photos and videos, add comment and share results.

With the addition of **QR CODE CAPABILITIES**, it has never been easier and quicker to complete an inspection.

This **TRAINING MODULE** will cover the process of creating a QR Code as well as how to use Cat Inspect to pull in data stored within the code.



CREATING A QR CODE

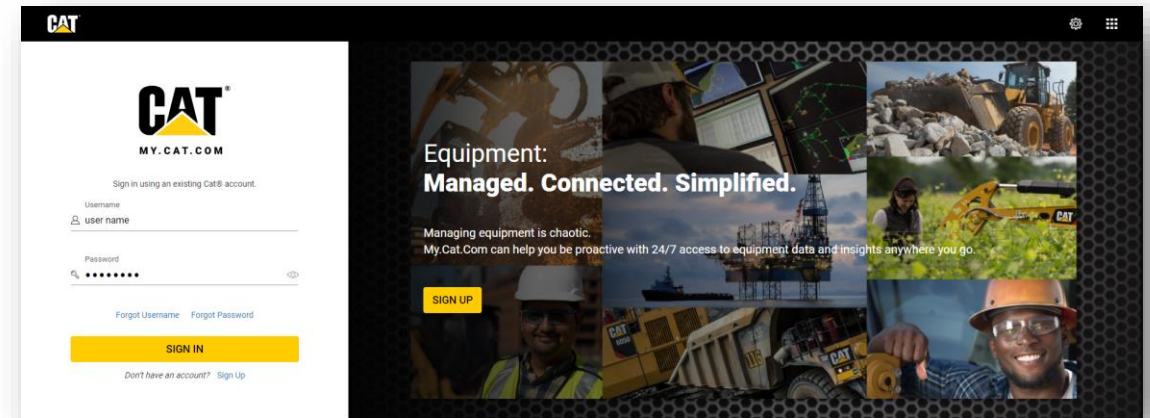
- The QR Code Generator can be accessed from both Cat Inspect and My.Cat.com
- Anyone with access to Cat Inspect or My.Cat.com can create a QR Code
- Login with your CWS (Corporate Web Security) ID at <https://catinspectweb.cat.com> or <https://my.cat.com/>



CREATING A QR CODE

ACCESS FROM CAT INSPECT: <https://catinspectweb.cat.com>

- Click on the QR Code Generator icon from the side menu bar.
- A new browser window will open where the user will create the QR Code.
- The QR Code generator is hosted in my.cat.com, log in with CWS if requested.



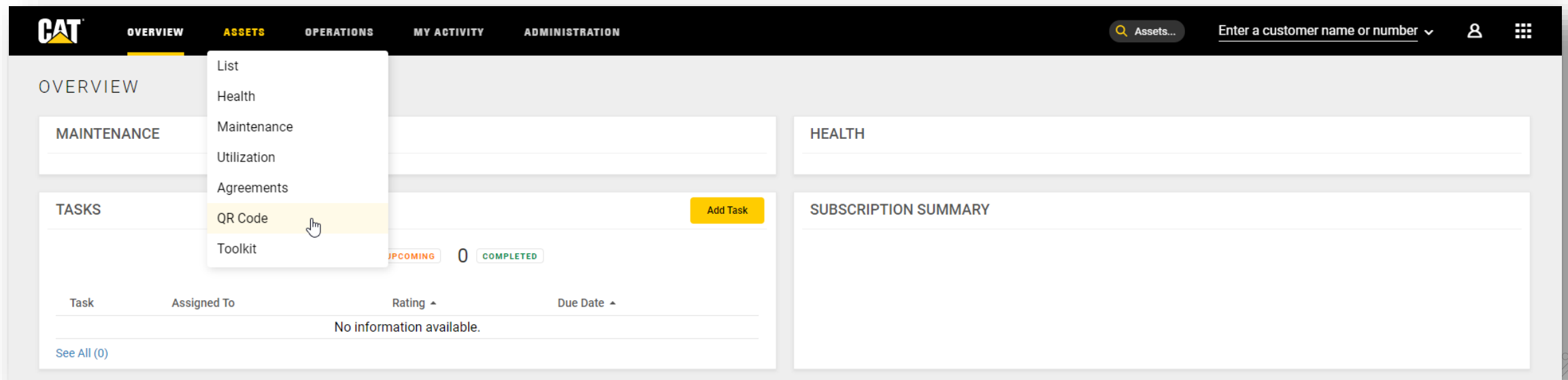
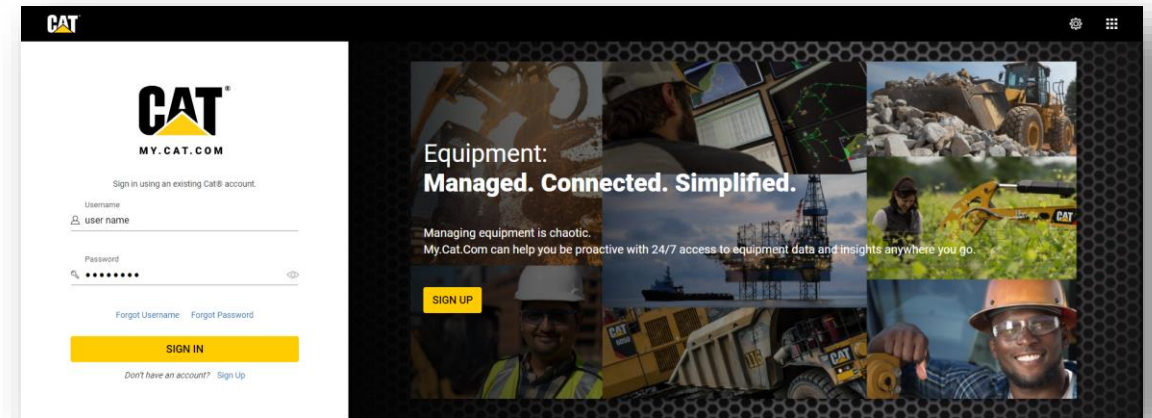
CAT INSPECT											
Inspections											
Date Range			09/04/2020 - 09/18/2020		All Inspections		Filter				
Inspection Number	S/N	Asset ID	Product Family	Type	Form Name	Inspector Name	Complete Date	Sync Time	Customer Name	Summary	Attachm
4483808	SPACEVAL		ARTICULATED DUMP TRUCK	Component D&A	CX38 Assembly - Transmission v1.0		09/17/2020	06:55 AM	001. Uyyi	0 2 0 0	0
4437476	2S201700	2s21700	BACKHOE LOADERS	Field Follow	BS4 Field Follow Check List		09/16/2020	09:44 AM	Shri Radha blue metals	29 6 105 21	91
4425527	L9T00150		BACKHOE LOADERS	Field Follow	CAT OFFICIAL Trinity B Field Follow Handover Template		09/14/2020	03:24 PM	Coesul	0 0 19 0	47
4429444	MY300104		MINI HYDRAULIC EXCAVATOR	Field Follow	Dagger Plus Field Follow Delivery Inspection		09/13/2020	09:06 PM	Qilinwangdui	4 3 82 4	19
4424962			BACKHOE LOADERS	Field Follow	CAT OFFICIAL Trinity B Field Follow Handover 416 Brazil 02/09/2020		09/08/2020	08:47 AM		0 0 0 0	0
4466558	MY300100		MINI HYDRAULIC EXCAVATOR	Field Follow	Dagger Plus Field Follow Delivery Inspection					0 0 0 0	0

CAT INSPECT QR CODE TRAINING

CREATING A QR CODE

ACCESS FROM CAT MY.CAT.COM: <https://my.cat.com/>

- From the Assets menu, click QR Code



CREATING A QR CODE

SINGLE ASSET

- Use the Asset tab to create a QR Code for a single asset.
- Enter data for all fields that you want embedded in the QR Code.
- The more data that is in the QR Code, the less the inspector will need to fill out when at the machine.
- *NOTE: The QR Code generator is also used for other applications. Not all fields will display in Cat Inspect.*

CAT OVERVIEW **ASSETS** OPERATIONS MY ACTIVITY Assets... Cat Product Link E2E

ASSETS: QR CODE

Asset Batch

Asset Details

Make
Select Make Asset ID

S/N Unit of Measurement
Hours

Product
Select Product Service Meter Value

Model

Customer Details

Customer Name Customer Number (UCID)
Cat Product Link E2E 2969780931

Customer Phone Email Address

Legend Alternate Email

Work Order

Asset Details

☒ Display asset details text next to the QR code image. ⓘ

☐ Include company name with asset details text. ⓘ

☐ Display the Legend field text under the QR code image. ⓘ

User Consent

By using this QR Code Generator, you understand and agree that any personal information that you enter into the fields above (such as name, phone number, and email) will be embedded into a QR Code and can be retrieved by others using Cat mobile apps. If you do not want your personal information to be used and shared in this manner, please refrain from utilizing this feature.

CREATE QR

CREATING A QR CODE

SINGLE ASSET

- Select the radio button options at the bottom of the form to display text next to or below the QR Code. Use this to identify the QR Code once it is printed out.
- Once all form data is entered, click the CREATE QR button to generate the QR Code image, which will display on screen and automatically download.
- Print this image for display on the asset.

Asset Details

- ☒ Display asset details text next to the QR code image. ⓘ
- ☐ Include company name with asset details text. ⓘ
- ☐ Display the Legend field text under the QR code image. ⓘ

Asset: 2020
S/N: GBJ01000
Make: CAT
Model: 308ECRSB



Demo Customer
Asset: 2020
S/N: GBJ01000
Make: CAT
Model: 308ECRSB



2020 - GBJ01000 - CAT - 308ECRSB

CREATING A QR CODE

BATCH OF ASSETS

- Select the Batch tab to create a QR Code for each selected asset.
- Select up to 25 assets in the left column, selected assets will appear in the right column.
- Enter Customer Details data which will be encoded in each QR Code.
- Select the File Format, either a PDF or zip file, each will contain all of the QR Code images.
- Select the radio button options at the bottom of the form to display text next to or below the QR Code. Use this to identify the QR Code once it is printed out.
- Click the CREATE BATCH QR CODES button to download.

The screenshot displays the CAT INSPECT QR CODE TRAINING interface. At the top, the navigation bar includes the CAT logo, tabs for OVERVIEW, ASSETS, OPERATIONS, and MORE, and a search bar. The main header shows 'ASSETS: QR CODE' and a 'Filters' button. Below this, the interface is divided into two main sections: 'Available Assets' and 'Selected Assets'.

Available Assets: This section contains a table with columns for Asset, Location, and Connection. It lists 1229 assets. The first few rows are:

Asset	Location	Connection
<input type="checkbox"/> 10TMAAC2615071741 - MISCE...	Perrysburg, Ohio, United States	CONNECTED
<input type="checkbox"/> 11132019 - CAT F-150	-	NOT CONNECTED
<input checked="" type="checkbox"/> 11142019 - BOBCAT - MELRO...	-	NOT CONNECTED
<input type="checkbox"/> 12 -	-	NOT CONNECTED
<input type="checkbox"/> 12 - BOBCAT - MELROE	-	NOT CONNECTED
<input type="checkbox"/> 12 - 1341 - BOBCAT - MELROE F...	-	NOT CONNECTED
<input checked="" type="checkbox"/> 12 - 34343456 - BOBCAT - MELRO...	-	NOT CONNECTED
<input type="checkbox"/> 12 - ASSET1234 - OLYMPIAN CAT...	-	NOT CONNECTED
<input type="checkbox"/> 12 - aws00131 - TIGERCAT 2560	-	NOT CONNECTED
<input type="checkbox"/> 121013 - AAA03002 - CAT 5110B	-	NOT CONNECTED

Below the table, it shows '11 - 20 of 1,229 Results' and a pagination bar with links for 1, 2, 3, 4, 5, and 123.

Selected Assets: This section shows the assets selected from the left column. It currently contains two assets:

Asset
<input checked="" type="checkbox"/> 11142019 - BOBCAT - MELRO...
<input checked="" type="checkbox"/> 12 - 34343456 - BOBCAT - MELRO...

Customer Details: This section contains form fields for Customer Name (E2E Customer 1), Customer Number (UCID) (2969518742), Customer Phone, Email Address, Work Order, and Alternate Email.

File Format: This section contains two radio buttons: 'Generate QR Codes in a single PDF file, one per page.' (selected) and 'Generate QR Code image files, downloaded in a zip file.'

Asset Details: This section contains three radio buttons: 'Display asset details text next to the QR code image.' (selected), 'Include company name with asset details text.', and 'Display asset details text under the QR code image.'

User Consent: This section contains a text block stating: 'By using this QR Code Generator, you understand and agree that any personal information that you enter into the fields above (such as name, phone number, and email) will be embedded into a QR Code and can be retrieved by others using Cat mobile apps. If you do not want your personal information to be used and shared in this manner, please refrain from utilizing this feature.'

At the bottom, there is a yellow button labeled 'CREATE BATCH QR CODES'.

CREATING A QR CODE

SAVING & PRINTING QR CODES

- Select the Batch tab to create a QR Code for each selected asset.
- It's recommended to rename and save the QR Code for a single asset using the Serial Number or Asset ID for easy retrieval.
- When printing, it is recommended to keep the QR Code at least 1.5 inches (40mm) tall and maintain the aspect ratio. This ensures that Cat Inspect will be able to easily read it
- Different types of uses for Cat Inspect QR Codes
 - Print off on a sticker and attach near the master switch on an asset or on the windshield
 - Laminate and put in the cab
 - Attach to a work order that an inspector will have in the field



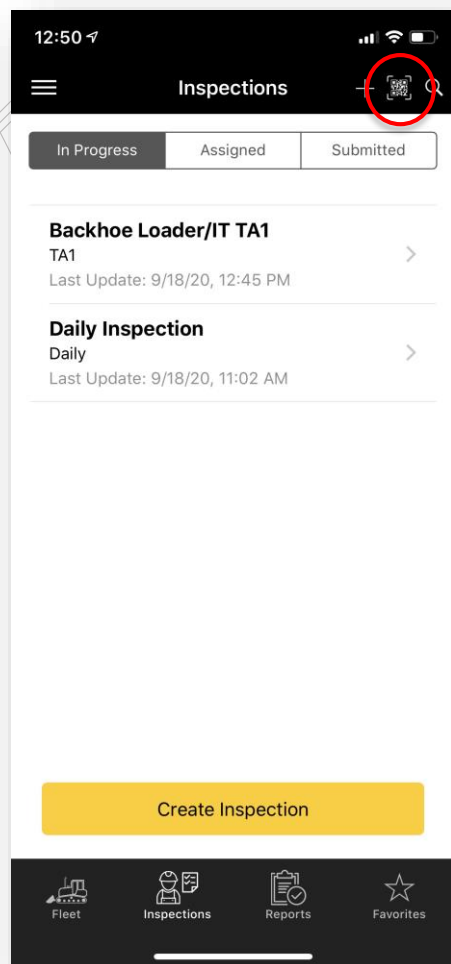
CREATING A QR CODE

SCANNING QR CODE WITH CAT INSPECT

- Starting an inspection with a QR Code Scan
- Scanning a QR code after an inspection template is chosen
- *Customer Only Feature:* Scan QR Code to locate a specific asset from the Fleet view



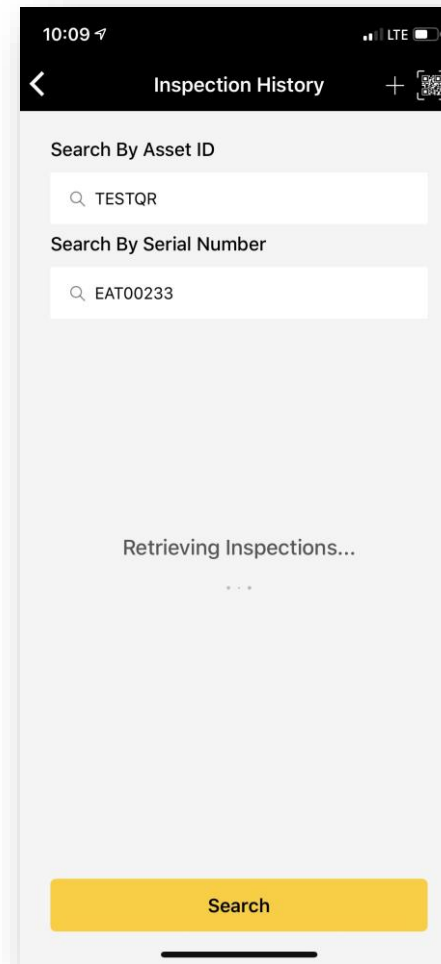
LAUNCHING AN INSPECTION

**STEP 1:**

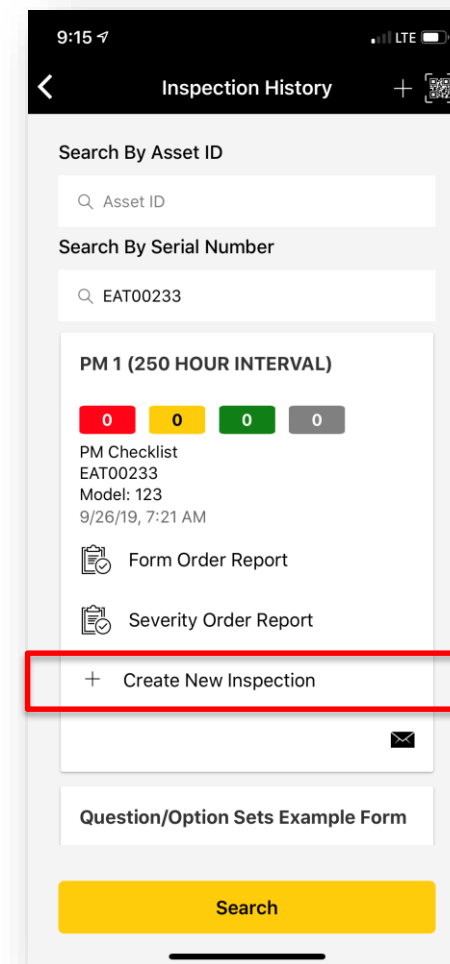
From Home Screen tap QR icon

**STEP 2:**

Point camera at QR sticker on asset and align

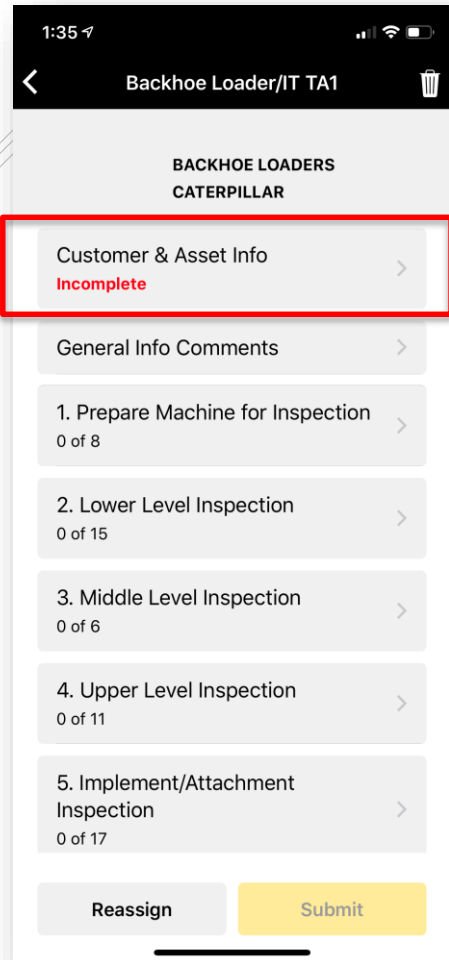
**STEP 3:**

App will automatically search inspection history

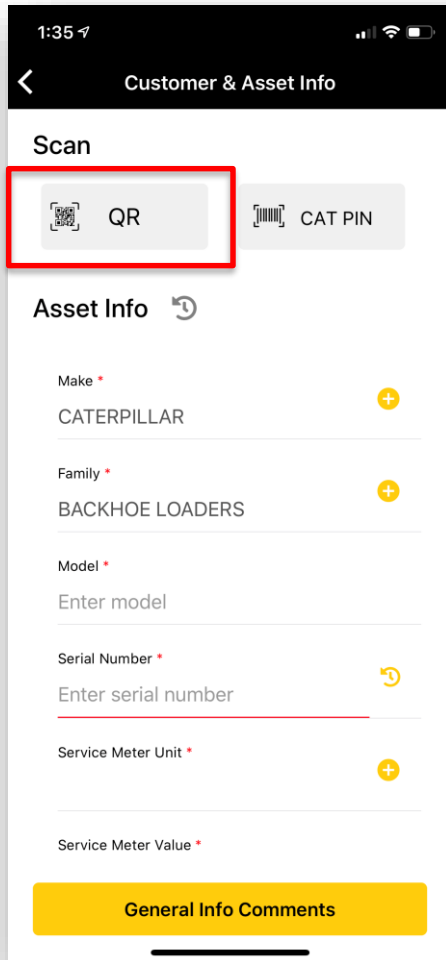
**STEP 4:**

Scroll inspection history, find correct form and tap Create New Inspection

SCANNING A QR CODE AFTER INSPECTION

**STEP 1:**

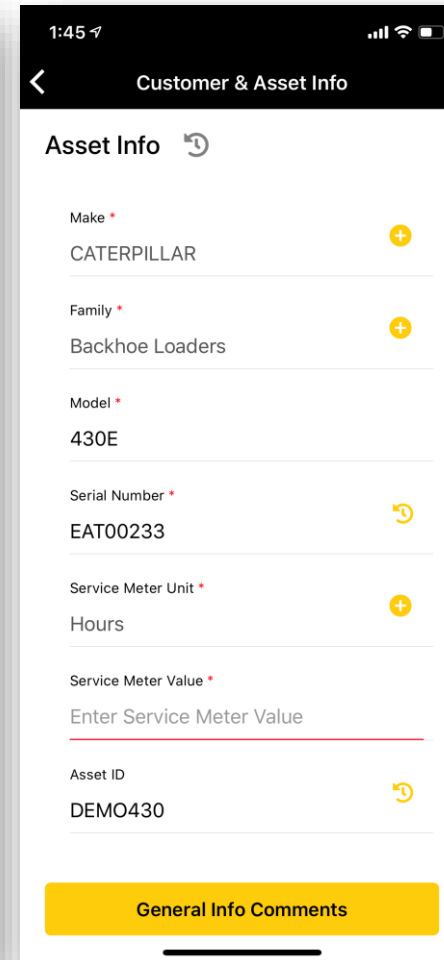
Tap to open the Customer & Asset Info page

**STEP 2:**

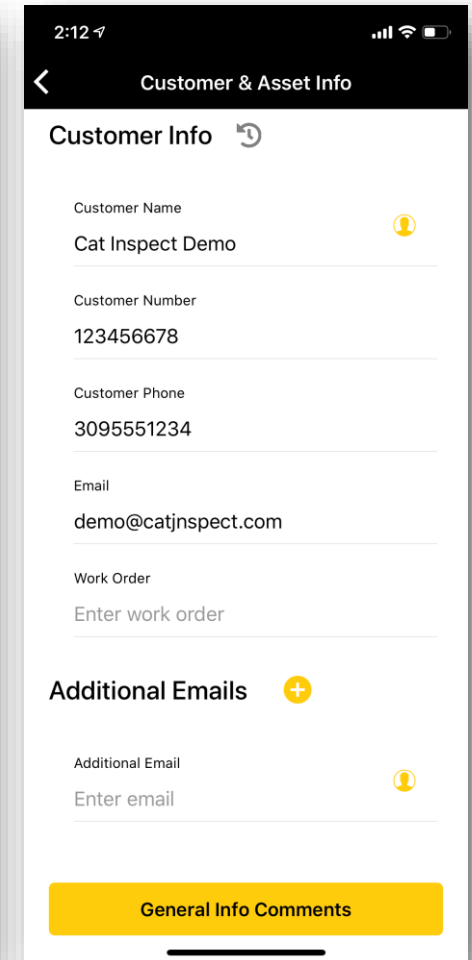
Tap the QR Code button

**STEP 3:**

Point camera at QR sticker on asset and align

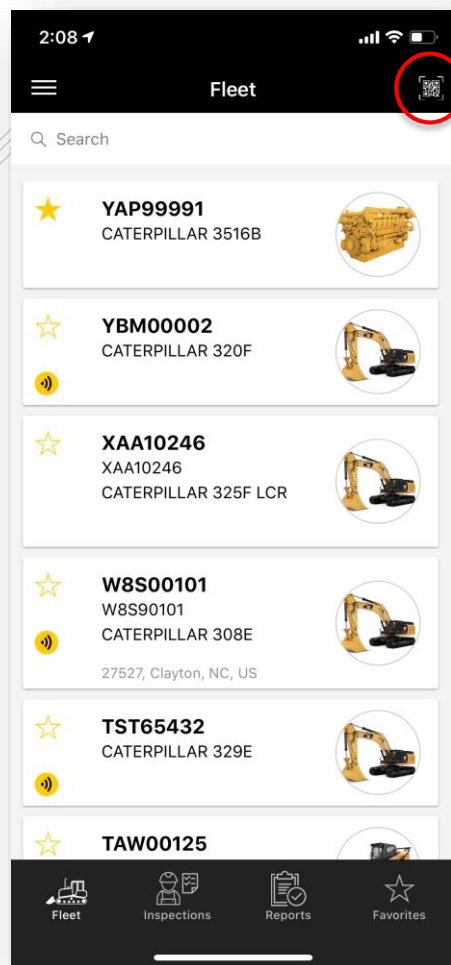
**STEP 4:**

Data within the QR code will auto populate. Review to confirm asset information and enter SMV.

**STEP 5:**

Scroll to review Customer Information then proceed to General Info & Comments section.

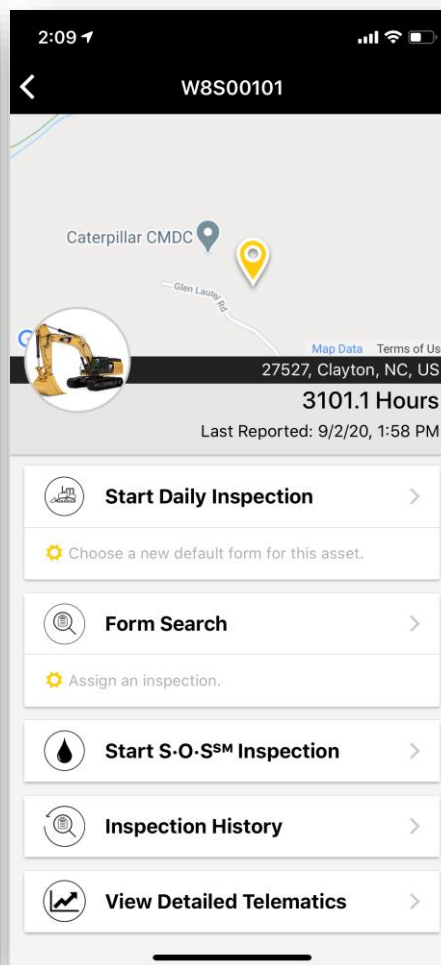
SCAN QR CODE: FLEET PAGE TO LOCATE ASSET

**STEP 1:**

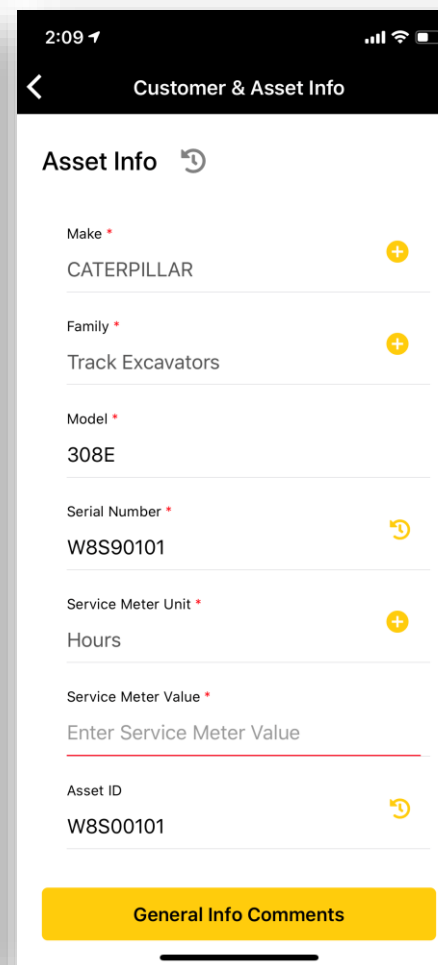
From the Fleet page, tap the QR code icon

**STEP 2:**

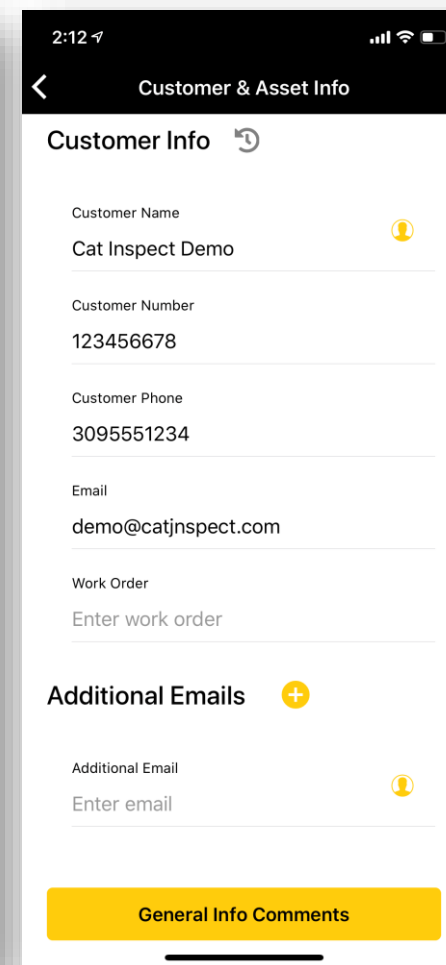
Point camera at QR sticker on asset and align

**STEP 3:**

From the Asset screen, start a Daily Inspect or Search for another inspection form

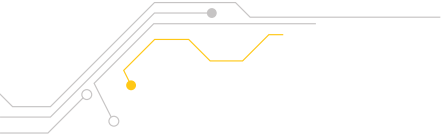
**STEP 4:**

The asset information will auto populate, review all data and then enter SMV

**STEP 5:**

Scroll to review Customer Information then proceed to General Info & Comments section

RESOURCES



CAT INSPECT WEB PORTAL

<https://catinspectweb.cat.com/>

CUSTOMER REFERENCE PAGE

<https://www.cat.com/catinspect>

DEALER REFERENCE PAGE

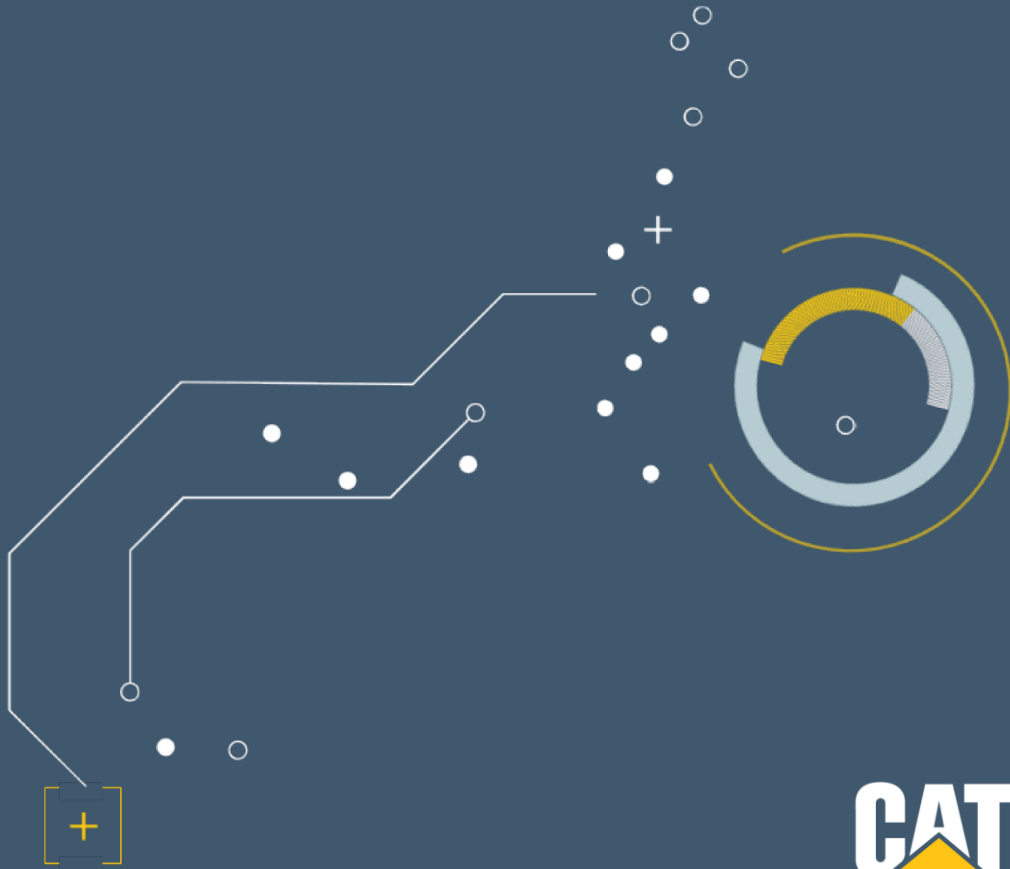
<https://dealer.cat.com/catinspect>

CAT DIGITAL SUPPORT

catdigitalsupport@cat.com

(866) 228-2111





CATERPILLAR®

© 2020 Caterpillar. All Rights Reserved. CAT, CATERPILLAR, LET'S DO THE WORK, their respective logos, "Caterpillar Yellow", the "Power Edge" and Cat "Modern Hex" trade dress as well as corporate and product identity used herein, are trademarks of Caterpillar and may not be used without permission. VisionLink is a trademark of Trimble Navigation Limited, registered in the United States and in other countries.