



**READY WHEN YOU ARE
ALL DAY. EVERY DAY.**

DRY BULK HANDLING EQUIPMENT FOR PORT APPLICATIONS



FOCUSED ON YOUR SUCCESS

Whether you work in a seaport or inland operation, your goal is to move more material in less time at a lower total cost. Caterpillar and your Cat® dealer understand what drives your success. We build and support products that are ideally suited to dry bulk handling in port environments. Dependable, productive and versatile, Cat equipment can be used to:

- Load and unload ships and barges
- Transfer, load and store materials
- Build and manage stockpiles
- Clean and maintain ships and quays

Choose Caterpillar for the tools and resources you need to work safely, efficiently and profitably—all day, every day.



SAFETY FIRST

Protecting people, materials and assets are priorities we share. To enhance safety, we offer a factory-built industrial package that includes cab screen guards, pressurized cab filtration, a rear view camera and more. For additional operator comfort and convenience, Cat products feature low sound and vibration levels, easy cab access, ground level service points and lighting systems that optimize visibility. <http://safety.cat.com>

PURPOSE BUILT

You benefit from the built-in versatility of Cat products and our large selection of work tools and attachments—whether you move aggregates, coal, scrap, grains or other bulk materials. We offer factory-built application-specific configurations—like the Ship-hold Arrangement for Track-Type Loaders that features heavy-duty structures, lifting eyes and a reversing fan. <http://www.uk.cat.com/work-tools>

LONG LIFE, EXCELLENT RESALE VALUE

Count on Caterpillar for robust designs, rugged structures and heavy-duty components that extend service life and improve resale value. Our iron is so durable it can often be remanufactured or rebuilt to deliver a second or third life.

Cat Reman parts and components, remanufactured with rigorous processes and environmentally friendly techniques, meet the highest standards of quality and performance while reducing costs. www.cat.com/parts/remanufactured-products

Cat Certified Rebuild products incorporate the latest Cat technology and engineering updates, providing like-new performance and warranty at a lower cost. www.cat.com/parts/cat-certified-rebuild

GREAT SERVICE, MAXIMUM UPTIME

Cat dealers understand the time and cost pressures you face, and they have the resources to help you maximize uptime. No matter where your port is located, Cat dealer National Service Support gives you direct access to world-class customer support.

The Cat parts network spans the globe and allows rapid delivery of new, quality used and remanufactured parts.

Professional technicians have the skills, tools and training to keep your equipment running productively.

Condition monitoring processes, like Product Link™, VisionLink™ and Scheduled Oil Sampling (S.O.SSM), optimize equipment performance and service life. www.cat.com/technology

Equipment management services include a range of customer support agreements that reduce the risk of revenue losses caused by unscheduled downtime. www.cat.com/maintenance-and-support

VALUABLE EXPERTISE

Although parts and service excellence are hallmarks of our brand, Caterpillar and Cat dealers offer many other business solutions.

Rental and used equipment options represent affordable alternatives to new machines and engines. www.cat.com/rental www.cat.com/used-equipment

Financing and leasing plans, offered through Cat Financial, help you acquire the assets you need to be successful. www.cat.com/financing-and-insurance

Insurance products, sold through Cat Insurance, provide protection against costly component failure. www.cat.com/financing-and-insurance

OEM solutions permit Original Equipment Manufacturers to integrate Cat components and systems into their products to enhance value and achieve differentiation. www.cat.com/oem-solutions

SUSTAINABILITY

The engine in your Cat equipment features ACERT™ Technology, an innovative solution that delivers high performance and excellent fuel efficiency while reducing emissions. www.cat.com/sustainability

SHIP LOADING AND UNLOADING

HIGH PRODUCTION AT THE LOWEST COST PER TON

You expect your ship-hold and quay-side equipment to move large volumes of material safely, efficiently and productively. Caterpillar meets that expectation with an extensive selection of material handling products that deliver high performance and fast cycle times.

When working the hold, use high-efficiency Cat wheel loaders to distribute material quickly between the extremities and the loading areas, filling void space to reduce cost per ton. Cat excavators are another good option, offering quick cycle times and long reach. Consider Cat track-type tractors or track-type loaders when the job requires pushing or pulling materials, particularly when low ground pressure is a priority. Or opt for a Cat skid steer loader or compact track loader when working around smaller vessels.

At quay side, depend on Cat wheel material handlers for high lift capacity, excellent controllability and an operator's station that boosts comfort and productivity.

EQUIPMENT OPTIONS



Small/Medium Wheel Loaders:
924, 930, 938, 950, 962, 966, 972, 980



Small/Medium Hydraulic Excavators:
312, 314, 316, 319, 320, 323, 324



Track-Type Tractors:
D3, D4, D5, D6 (LGP)



Track-Type Loaders:
953, 963



Skid Steer Loaders:
216, 226, 236, 242, 246, 252, 256, 262, 272



Compact Track Loaders:
279, 289, 299



Wheel Material Handlers:
M322 MH, M325 MH



WORK TOOLS



PERFORMANCE SERIES BUCKET
Specifically designed to enhance machine performance while in load, carry and stockpile applications.



BLADES
Push, pull, dig or doze material quickly and cost-effectively.



LIGHT MATERIAL BUCKETS
Move large volumes of loosely packed materials, such as fertilizer and wood chips.



BROOMS
Sweep, collect and remove dirt, rock and other debris to improve site safety and efficiency.



TILT BUCKETS
Access hard-to-reach areas with a bucket that pivots 45° in either direction.



LOGGING FORKS
Independent top clamps close down on tine tips to allow maximum capacity in high-volume applications.



CLAMSHELL BUCKETS
Pick up, transport and deposit materials efficiently and economically.



COUPLERS
Improve performance and versatility with quick couplers that allow faster, more efficient tool change.



ORANGE PEEL GRAPPLE
Ideal for safely and efficiently handling shredded scrap, long structural beams, car bodies and various other materials found at scrap yards and recycling processing centers.



LOAD, TRANSFER AND STORAGE

PRODUCTIVITY AND VERSATILITY—INDOORS AND OUT

Speed and flexibility are big priorities in your business. You are under constant pressure to move many types of material—into and out of storage—quickly and safely.

Cat wheel loaders will help you optimize productivity and versatility. Available in standard or high-lift arrangements, they accommodate a variety of work tools and can be equipped with a quick coupler for fast tool changes. Optional Ride Control improves operator comfort and reduces spillage in load and carry operations.

Cat telehandlers are also powerful and maneuverable. Their range of lift capacities and lift heights lets you place heavy loads in high spaces.

If the job calls for tipping out material to the quay, a Cat articulated truck is an excellent option. Fast cycle times, automotive-style comfort and an advanced suspension system boost productivity in all types of underfoot.

EQUIPMENT OPTIONS



Small/Medium/Large Wheel Loaders:

924, 930, 950, 962, 966, 972, 980, 988, 990, 992



Telehandlers:

TH406, TH407



Articulated Trucks:

725, 730, 735, 740



WORK TOOLS



PERFORMANCE SERIES BUCKET

Specifically designed to enhance machine performance while in load, carry and stockpile applications.



LIGHT MATERIAL BUCKETS

Move large volumes of loosely packed materials, such as fertilizer and wood chips.



LOGGING GRAPPLES

Grasp, rotate, lift or drag logs, timber and other long materials.



FUSION™ QUICK COUPLER

Allows quick change of worktools. Its unique design offers no loss in performance. Has a rattle-free fit, which gives better tool control and improves safety.



STOCKPILING

POWER, EFFICIENCY AND STABILITY

Depend on Cat equipment to help you build stockpiles safely and maintain them efficiently while optimizing site space and preventing contamination.

Large Cat wheel loaders, equipped with high-performance engines, efficient hydraulics and high-capacity buckets, are especially effective at the bottom of a stockpile, moving large volumes of material in fewer passes. Our big loaders also deliver the high rimpull you need to climb the stockpile, plus the stability you demand when working in uneven terrain. Cat mid-size wheel loaders offer the same benefits of the larger models, yet may be compact enough to work indoors or in tight spaces.

Cat track-type tractors excel at the top of the stockpile. The suspended undercarriage improves traction and flotation in soft materials and increases stability, especially on steep slopes.

EQUIPMENT OPTIONS



Medium/Large Wheel Loaders:
966, 972, 980, 988, 990, 992



Medium/Large Track-Type Tractors:
TH406, TH407



Wheel Material Handlers:
M322 MH, M325 MH, M325 L MH



Wheeled Dozers:
824, 834, 844



Articulated Trucks:
725, 730, 735, 740



WORK TOOLS



PERFORMANCE SERIES BUCKET
Specifically designed to enhance machine performance while in load, carry and stockpile applications.



BLADES
Push, pull, dig or doze material quickly and cost-effectively.



LIGHT MATERIAL HIGH-CAPACITY BUCKETS
Allows increasing overall tipping height while maintaining production and bucket capacity.



QUAY CLEANUP AND MAINTENANCE

EASY TO MANEUVER, IDEAL FOR MULTITASKING

Save time, reduce labor costs and enhance site safety when you use Cat equipment to clean and maintain the quay area. Our large line of reliable products can be equipped with a variety of work tools to accommodate many jobs. Quick coupler systems make tool changes fast and easy, so you can do more work in less time with fewer machines.

Cat small and compact wheel loaders are easy to operate with low-effort hydrostatic controls and outstanding visibility. Take advantage of their high-capacity buckets or put them to work with brooms, grapples and other specialty tools.

Cat hydraulic excavators can multitask too. Our unique Compact Radius design, available on selected models, lets you work in areas you might otherwise not be able to access.

Cat skid steer loaders are compact and maneuverable and are ideal for working in tight spaces. If ground conditions are poor, Cat compact track loaders offer excellent traction and flotation. And when you need to tackle tough jobs in high places, count on Cat telehandlers for performance and versatility.

EQUIPMENT OPTIONS



Compact Wheel Loaders:
906, 907, 908



Small Wheel Loaders:
924, 930, 938



Mini Hydraulic Excavators
301.4, 301.7, 302.4, 302.7 CR,
303.5 CR, 304 CR, 305 CR,
305.5 CR, 308 CR SB



Small Hydraulic Excavators:
308 (CR), 312, 314 (CR), 316



Skid Steer Loaders:
216, 226, 236, 242, 246, 252,
256, 262, 272



Compact Track Loaders:
259, 279, 289, 299



Telehandlers:
TH406, TH407, TH414

WORK TOOLS



PERFORMANCE SERIES BUCKET
Specifically designed to enhance machine performance while in load, carry and stockpile applications.



LIGHT MATERIAL BUCKETS
Move large volumes of loosely packed materials, such as fertilizer and wood chips.



TILT BUCKETS
Access hard-to-reach areas with a bucket that pivots 45° in either direction.



CLAMSHELL BUCKETS
Pick up, transport and deposit materials efficiently and economically.



BROOMS
Sweep, collect and remove dirt, rock and other debris to improve site safety and efficiency.



COUPLERS
Improve performance and versatility with quick couplers that allow faster, more efficient tool change.



DRY BULK HANDLING ATTACHMENTS

ALL PRODUCTS

WHEEL LOADERS

TRACK-TYPE LOADERS

TRACK-TYPE TRACTORS



CENTER HOLE SHOES
Reduce track packing and chain tightening, extend undercarriage life



JOYSTICK STEERING
Improves ease of operation, reduces training requirements



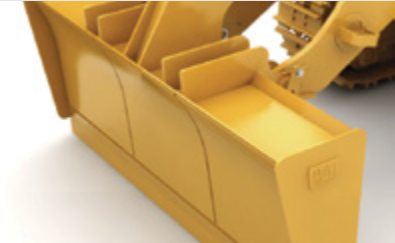
DRAWBAR PULL VS. SPEED
Delivers unmatched lugging capability and smooth shifting under load



HYDRAULIC TILT CAB SYSTEM
Improves maintenance access, increases uptime



HIGH-CAPACITY ALTERNATOR
95-amp unit provides extra power for electrical accessories



TRIM BLADE
Pushes material forward or pulls it backward with equal ease



BOGIE SUSPENSION
Keeps track on ground, improves stability



EXTRA FUEL TANK
Extends time to refill



OPERATOR STATION
Allows excellent visibility to material and blade for superior productivity and safety

MANAGING YOUR EQUIPMENT INVESTMENT

As a port professional, you are challenged to meet strict loading and unloading schedules. Any unplanned product problems or unexpected downtime can bring production to a halt, increasing costs and eroding your bottom line. Caterpillar and Cat dealers understand the realities of your business and offer a range of support solutions that helps you maximize uptime and earn the highest possible return on your equipment investment.

CHOOSE THE SOLUTION THAT MEETS YOUR NEEDS

- MAINTENANCE PARTS AND LABOUR
- S.O.S SERVICES
- ELECTRONIC DATA MONITORING
- PERIODIC INSPECTIONS
- RECOMMENDED ACTIONS
- PARTS MAINTENANCE KITS



SELECT A CUSTOMER SUPPORT AGREEMENT

Three levels of Customer Support Agreements are available and one is right for your operation:

- Essential
- Maintenance
- Full

LEVERAGE OUR TECHNOLOGY

Capitalize on the technology Caterpillar uses to monitor your equipment and predict and prevent problems.

CAT PRODUCT LINK

captures and reports events, diagnostic codes, hours, fuel consumption, location and other important information from a single machine or an entire fleet.

CAT VISIONLINK

is a secure web-based application that lets you and your dealer use the information gathered by Product Link to prevent unscheduled downtime, manage your fuel costs and earn a higher return on your equipment investment.





AEXQ1007
© 2013 Caterpillar All Rights Reserved
CAT, CATERPILLAR, their respective logos, "Caterpillar Yellow" and the "Power Edge" trade dress, as well as corporate and product identity used herein, are trademarks of Caterpillar and may not be used without permission.

