



352

Hydraulic Excavator

Technical Specifications

Configurations and features may vary by region. Please consult your Cat® dealer for availability in your area.

Table of Contents

Specifications	2
Engine	2
Swing Mechanism	2
Weights	2
Track	2
Drive	2
Hydraulic System	2
Service Refill Capacities	2
Standards	2
Sound Performance	2
Air Conditioning System	2
Operating Weights and Ground Pressures	3
Major Component Weights	4
Dimensions	5
Working Ranges and Forces	9
Reach Boom Lift Capacities	11
Mass Boom Lift Capacities	20
Bucket Specifications and Compatibility	26
Attachments Offering Guide:	
South America	27
CIS	28
Africa-Middle East	31
Southeast Asia	34
Standard and Optional Equipment	35
Cab Options	37
Dealer Installed Kit and Attachments	38

352 Hydraulic Excavator Specifications

Engine

Engine Model	C13	
Net Power – ISO 9249	302 kW	405 hp
Engine Power – ISO 14396	303 kW	406 hp
Bore	130 mm	5 in
Stroke	157 mm	6 in
Displacement	12.5 L	763 in ³
Biodiesel Capability	Up to B20 ⁽¹⁾	

- Meets China Nonroad Stage III emission standards, equivalent to U.S. EPA Tier 3/EU Stage IIIA.
- Recommended for use up to 4500 m (14,760 ft) altitude with engine power derate above 3000 m (9,834 ft).
- Net power advertised is the power available at the flywheel when the engine is equipped with fan, air cleaner, muffler, and alternator.
- Rating at 1,800 rpm.

⁽¹⁾Cat® engines are compatible with the following renewable, alternative, and bio-fuels* with lower greenhouse gas emission impact:

- ✓ Up to B20 biodiesel (FAME)**
- ✓ Up to 100% HVO and GTL renewable fuels

*Refer to guidelines for successful application. Please consult your Cat dealer or “Caterpillar Machine Fluids Recommendations” (SEBU6250) for details.

**B30, where mandated, can be used. For use of higher blends, up to B100, consult your Cat dealer.

Swing Mechanism

Swing Speed	8.3 rpm	
Maximum Swing Torque	189 kN-m	139,000 lbf-ft

Weights

Including common components: Fixed Gauge (FG) long undercarriage and 9.8 mt (21,605 lb) counterweight

Operating Weight	50 500 kg	111,300 lb
------------------	-----------	------------

- Mass boom, M2.5UB (8'2") stick, SD 3.21 m³ (4.20 yd³) bucket, and 750 mm (30") double grouser shoes.

Operating Weight	49 633 kg	109,400 lb
------------------	-----------	------------

- Reach boom, M2.5UB (8'2") stick, HD 2.61 m³ (3.64 yd³) bucket, and 600 mm (24") double grouser shoes.

Track

Optional Track Shoes Width	900 mm	35 in
Optional Track Shoes Width	750 mm	30 in
Standard Track Shoes Width	600 mm	24 in
Optional Track Shoes Width	600 mm	24 in
Standard Track Shoes Width	750 mm	30 in
Optional Track Shoes Width	750 mm	30 in
Standard Track Shoes Width	600 mm	24 in
Optional Track Shoes Width	900 mm	35 in
Number of Shoes (each side)	52	
Number of Track Rollers (each side)	9	
Number of Carrier Rollers (each side)	2	

Drive

Maximum Gradeability	35°/70%	
Maximum Travel Speed	4.5 km/h	2.8 mph
Maximum Drawbar Pull	351 kN	78,908 lbf

Hydraulic System

Main System – Maximum Flow (Implement)	779 L/min (389 × 2 pumps)	206 gal/min (103 × 2 pumps)
Maximum Pressure – Equipment – Implement	35 000 kPa	5,076 psi
Maximum Pressure – Equipment – Lift Mode	38 000 kPa	5,511 psi
Maximum Pressure – Travel	35 000 kPa	5,076 psi
Maximum Pressure – Swing	26 000 kPa	3,771 psi
Boom Cylinder – Bore	170 mm	7 in
Boom Cylinder – Stroke	1524 mm	60 in
Stick Cylinder – Bore	190 mm	7 in
Stick Cylinder – Stroke	1758 mm	69 in
TB Bucket Cylinder – Bore	160 mm	6 in
TB Bucket Cylinder – Stroke	1356 mm	53 in
UB Bucket Cylinder – Bore	170 mm	7 in
UB Bucket Cylinder – Stroke	1396 mm	55 in

Service Refill Capacities

Fuel Tank Capacity	715 L	188.9 gal
Cooling System	52 L	13.7 gal
Engine Oil (with filter)	40 L	10.6 gal
Swing Drive	10.5 L	2.8 gal
Final Drive (each)	9.5 L	2.5 gal
Hydraulic System (including tank)	550 L	145.3 gal
Hydraulic Tank (including suction pipe)	217 L	57.3 gal

Standards

Brakes	ISO 10265:2008
Cab/FOGS	ISO 10262:1998
Cab/ROPS	ISO 12117-2:2008

Sound Performance

ISO 6395 (external)	107 dB(A)
ISO 6396 (inside cab)	75 dB(A)

- When properly installed and maintained, the cab offered by Caterpillar, when tested with doors and windows closed according to ANSI/SAE J1166 OCT98, meets OSHA and MSHA requirements for operator sound exposure limits in effect at time of manufacture.
- Hearing protection may be needed when operating with an open operator station and cab (when not properly maintained or doors/windows open) for extended periods or in a noisy environment.

Air Conditioning System

The air conditioning system on this machine contains the fluorinated greenhouse gas refrigerant R134a (Global Warming Potential = 1430). The system contains 1.00 kg of refrigerant which has a CO₂ equivalent of 1430 metric tonne.

352 Hydraulic Excavator Specifications

Operating Weights and Ground Pressures

Base Machine Configurations	600 mm (24") Double Grouser Shoes		750 mm (30") Triple Grouser Shoes		750 mm (30") Double Grouser Shoes		900 mm (35") Triple Grouser Shoes	
	Weight	Ground Pressure	Weight	Ground Pressure	Weight	Ground Pressure	Weight	Ground Pressure
	kg (lb)	kPa (psi)	kg (lb)	kPa (psi)	kg (lb)	kPa (psi)	kg (lb)	kPa (psi)
Base Frame with Single Flange Track Rollers and Carrier Rollers								
9.8 mt (21,605 lb) Counterweight								
Reach Boom + R3.9 m (12'10") TB Stick* + 2.90 m ³ (3.79 yd ³) HD Bucket	48 700 (107,300)	84.3 (12.2)	49 300 (108,700)	68.4 (9.9)	49 400 (109,000)	68.5 (9.9)	50 000 (110,300)	57.9 (8.4)
Reach Boom + R3.35 m (11'0") TB Stick + 2.90 m ³ (3.79 yd ³) HD Bucket	48 500 (106,900)	84.0 (12.2)	49 100 (108,300)	68.2 (9.9)	49 300 (108,700)	68.3 (9.9)	49 900 (110,000)	57.7 (8.4)
Reach Boom + R2.9 m (9'6") TB Stick + 2.90 m ³ (3.79 yd ³) HD Bucket	48 400 (106,700)	83.9 (12.2)	49 100 (108,200)	68.1 (9.9)	49 200 (108,500)	68.2 (9.9)	49 800 (109,800)	57.6 (8.4)
Mass Boom + M3.0 m (9'1") UB Stick + 3.50 m ³ (4.58 yd ³) SDS Bucket	49 800 (109,700)	86.2 (12.5)	50 400 (111,200)	70.0 (10.1)	50 600 (111,500)	70.1 (10.2)	—	—
Mass Boom + M2.5 m (8'2") UB Stick + 3.50 m ³ (4.58 yd ³) SDS Bucket	49 700 (109,500)	86.0 (12.5)	50 300 (110,900)	69.8 (10.1)	50 500 (111,200)	69.9 (10.1)	—	—

All operating weights include a 90% fuel tank with 75 kg (165 lb) operator.

*R3.9 is only for Asia, CIS.

352 Hydraulic Excavator Specifications

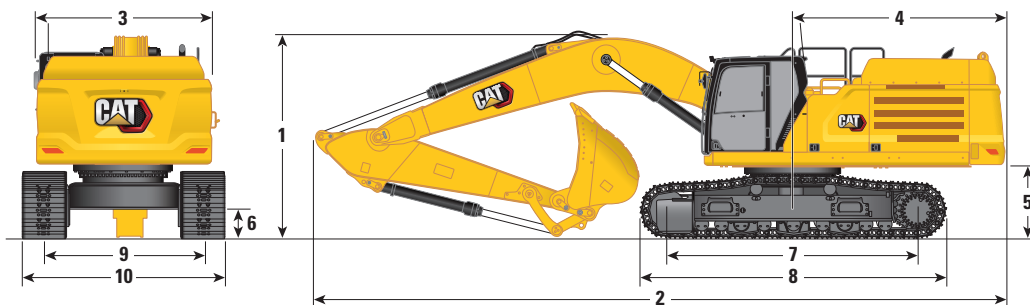
Major Component Weights

	kg	lb
Base Machine Weight:		
With 9.8 mt (21,605 lb) Counterweight, Standard Swing Frame, Base Frame with SF Track Rollers and Carrier Rollers	32 750	72,210
Track Shoes:		
600 mm (24") Width, Double Grouser Track Shoes	5400	11,900
750 mm (30") Width, Triple Grouser Track Shoes	6040	13,320
750 mm (30") Width, Double Grouser Track Shoes	6190	13,650
900 mm (35") Width, Triple Grouser Track Shoes	6790	14,970
Two Boom Cylinders	920	2,020
Weight of 90% Fuel Tank and 75 kg (165 lb) Operator	630	1,380
Counterweight:		
9.8 mt (21,605 lb) Counterweight	9800	21,610
Swing Frame		
Swing Frame	4290	9,450
Base Frame with SF Track Rollers and Carrier Rollers	10 740	23,670
Booms (including lines, pins, stick cylinder):		
Reach Boom 6.9 m (22'8")	4490	9,910
Mass Boom 6.55 m (21'6")	4780	10,540
Sticks (including lines, pins, bucket cylinder, bucket linkage):		
Reach Stick R3.35TB (11'0")	2540	5,610
Reach Stick R2.9TB (9'6")	2460	5,420
Mass Stick M3.0UB (9'10")	3000	6,610
Mass Stick M2.5UB (8'2")	2820	6,210
Reach Stick R2.9TB (9'6")	2500	5,510
Mass Stick M3.0UB (9'10")	3020	6,658
Mass Stick M2.5UB (8'2")	2810	6,195
Buckets (without linkage):		
For Reach – 2.14 m ³ (2.8 yd ³) HD for TB (only for R3.9)	2340	5,150
For Reach – 2.78 m ³ (3.64 yd ³) HD for TB	2440	5,380
For Reach – 2.90 m ³ (3.79 yd ³) HD for TB	2690	5,920
For Mass – 3.50 m ³ (4.58 yd ³) SDS for UB	3230	7,110

352 Hydraulic Excavator Specifications

Dimensions

All dimensions are approximate and may vary depending on bucket selection.



Boom Options

Reach Boom 6.9 m (22'8")

Stick Options

Reach Stick

R3.9TB (12'10")

R3.35TB (11'0")

R2.9TB (9'6")

mm

ft/in

mm

ft/in

mm

ft/in

mm

ft/in

mm

ft/in

1 Machine Height:

Cab Height	3230	10'7"	3230	10'7"	3230	10'7"	3230	10'7"	3230	10'7"
FOGS Height	3370	11'1"	3370	11'1"	3370	11'1"	3370	11'1"	3370	11'1"
Guardrails/Handrails Height	3370	11'1"	3370	11'1"	3370	11'1"	3370	11'1"	3370	11'1"
With Boom/Stick/Bucket Installed	3670	12'0"	3580	11'9"	3580	11'9"	3680	12'1"	3680	12'1"
With Boom/Stick Installed	3700	12'2"	3580	11'9"	3580	11'9"	3500	11'6"	3500	11'6"
With Boom Installed	3100	10'2"	3100	10'2"	3100	10'2"	3100	10'2"	3100	10'2"
With Boom/Stick/Bucket Installed (with auxiliary lines)	3670	12'0"	3590	11'9"	3590	11'9"	3680	12'1"	3680	12'1"
With Boom/Stick Installed (with auxiliary lines)	3700	12'2"	3590	11'9"	3590	11'9"	3520	11'7"	3520	11'7"
With Boom Installed (with auxiliary lines)	3130	10'3"	3130	10'3"	3130	10'3"	3130	10'3"	3130	10'3"

2 Machine Length:

With Boom/Stick/Bucket Installed	11 910	39'1"	11 870	38'11"	11 870	38'11"	11 890	39'0"	11 890	39'0"
With Boom/Stick Installed	11 910	39'1"	11 870	38'11"	11 870	38'11"	11 850	38'11"	11 850	38'11"
With Boom Installed	10 640	34'11"	10 640	34'11"	10 640	34'11"	10 640	34'11"	10 640	34'11"
With Boom/Stick/Bucket Installed (with auxiliary lines)	11 910	39'1"	11 870	38'11"	11 870	38'11"	11 890	39'0"	11 890	39'0"
With Boom/Stick Installed (with auxiliary lines)	11 910	39'1"	11 870	38'11"	11 870	38'11"	11 850	38'11"	11 850	38'11"
With Boom Installed (with auxiliary lines)	10 640	34'11"	10 640	34'11"	10 640	34'11"	10 640	34'11"	10 640	34'11"

3 Upperframe Width without Walkways

3020 9'11" 3020 9'11" 3020 9'11" 3020 9'11" 3020 9'11"

4 Tail Swing Radius

3760 12'4" 3760 12'4" 3760 12'4" 3760 12'4" 3760 12'4"

5 Counterweight Clearance (without shoe lug)

1280 4'2" 1280 4'2" 1280 4'2" 1280 4'2" 1280 4'2"

6 Ground Clearance (without shoe lug)

475 1'7" 475 1'7" 475 1'7" 475 1'7" 475 1'7"

7 Length to Center of Rollers

4360 14'4" 4360 14'4" 4360 14'4" 4360 14'4" 4360 14'4"

Bucket Type

HD

SD-E

HD

SD-E

HD

Bucket Capacity

2.90 m³ 3.79 yd³ 3.00 m³ 3.92 yd³ 2.90 m³ 3.79 yd³ 3.00 m³ 3.92 yd³ 2.90 m³ 3.79 yd³

Bucket Tip Radius

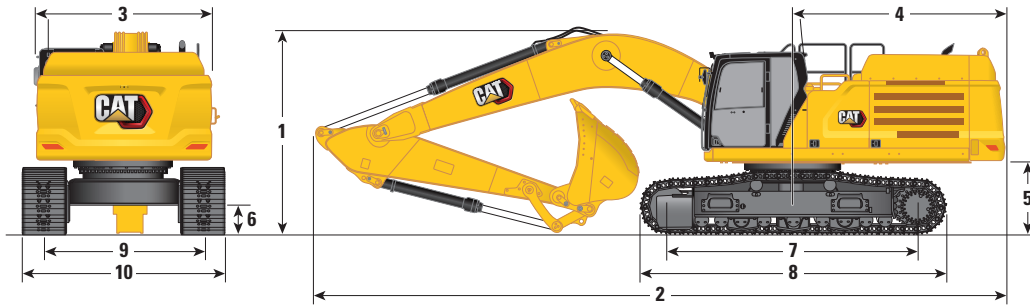
1934 6'4" 1919 6'4" 1934 6'4" 1919 6'4" 1934 6'4"

(continued on next page)

352 Hydraulic Excavator Specifications

Dimensions *(continued)*

All dimensions are approximate and may vary depending on bucket selection.



Boom Options

Reach Boom 6.9 m (22'8")

Stick Options

Reach Stick

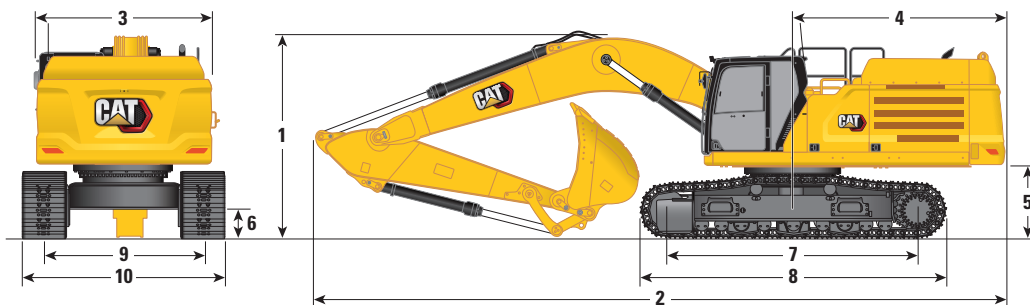
	R3.9TB (12'10")		R3.35TB (11'0")		R3.35TB (11'0")		R2.9TB (9'6")			
	mm	ft/in	mm	ft/in	mm	ft/in	mm	ft/in	mm	ft/in
8 Track Length with Triple Grouser Shoes	5370	17'7"	5370	17'7"	5370	17'7"	5370	17'7"	5370	17'7"
9 Track Gauge	2740	9'0"	2740	9'0"	2740	9'0"	2740	9'0"	2740	9'0"
Track Width:										
600 mm (24") Shoes	3340	10'11"	3340	10'11"	3340	10'11"	3340	10'11"	3340	10'11"
750 mm (30") Shoes	3490	11'5"	3490	11'5"	3490	11'5"	3490	11'5"	3490	11'5"
900 mm (35") Shoes	3640	11'11"	3640	11'11"	3640	11'11"	3640	11'11"	3640	11'11"
10 Undercarriage Width (with steps):										
600 mm (24") Shoes	3530	11'7"	3530	11'7"	3530	11'7"	3530	11'7"	3530	11'7"
750 mm (30") Shoes	3530	11'7"	3530	11'7"	3530	11'7"	3530	11'7"	3530	11'7"
900 mm (35") Shoes	3640	11'11"	3640	11'11"	3640	11'11"	3640	11'11"	3640	11'11"
Bucket Type	HD		SD-E		HD		SD-E		HD	
Bucket Capacity	2.90 m ³	3.79 yd ³	3.00 m ³	3.92 yd ³	2.90 m ³	3.79 yd ³	3.00 m ³	3.92 yd ³	2.90 m ³	3.79 yd ³
Bucket Tip Radius	1934	6'4"	1919	6'4"	1934	6'4"	1919	6'4"	1934	6'4"

(continued on next page)

352 Hydraulic Excavator Specifications

Dimensions (continued)

All dimensions are approximate and may vary depending on bucket selection.



Boom Options

Mass Boom 6.55 m (21'6")

Stick Options

Mass Stick

	M3.0UB (9'10")		M2.5UB (8'2")*	
	mm	ft/in	mm	ft/in
1 Machine Height:				
Cab Height	3230	10'7"	3230	10'7"
FOGS Height	3370	11'1"	3370	11'1"
Guardrails/Handrails Height	3370	11'1"	3370	11'1"
With Boom/Stick/Bucket Installed	4040	13'3"	4050	13'3"
With Boom/Stick Installed	3820	12'6"	3780	12'5"
With Boom Installed	3180	10'5"	3180	10'5"
With Boom/Stick/Bucket Installed (with auxiliary lines)	4040	13'3"	4050	13'3"
With Boom/Stick Installed (with auxiliary lines)	3780	12'5"	3780	12'5"
With Boom Installed (with auxiliary lines)	3200	10'6"	3200	10'6"
2 Machine Length:				
With Boom/Stick/Bucket Installed	11 580	38'0"	11 580	38'0"
With Boom/Stick Installed	11 530	37'10"	11 530	37'10"
With Boom Installed	10 280	33'9"	10 280	33'9"
With Boom/Stick/Bucket Installed (with auxiliary lines)	11 580	38'0"	11 580	38'0"
With Boom/Stick Installed (with auxiliary lines)	11 530	37'10"	11 530	37'10"
With Boom Installed (with auxiliary lines)	10 280	33'9"	10 280	33'9"
3 Upperframe Width without Walkways	3020	9'11"	3020	9'11"
4 Tail Swing Radius	3760	12'4"	3760	12'4"
5 Counterweight Clearance (without shoe lug)	1280	4'2"	1280	4'2"
6 Ground Clearance (without shoe lug)	475	1'7"	475	1'7"
7 Length to Center of Rollers	4360	14'4"	4360	14'4"
Bucket Type	SD		SD	
Bucket Capacity	3.21 m ³	4.20 yd ³	3.50 m ³	4.58 yd ³
Bucket Tip Radius	2086	6'10"	2108	6'11"

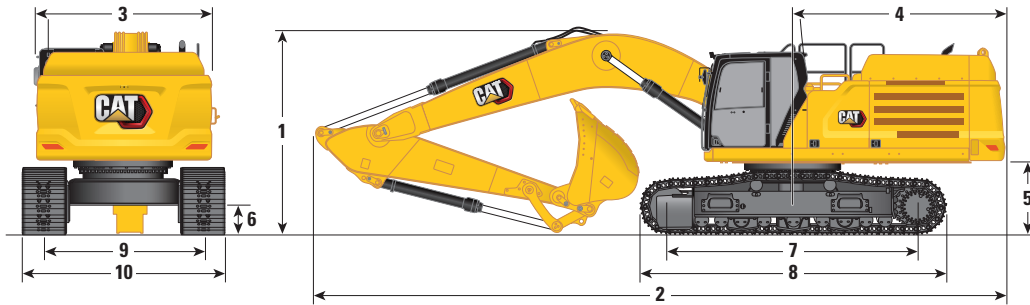
*M2.5 is not offered to Turkey

(continued on next page)

352 Hydraulic Excavator Specifications

Dimensions (continued)

All dimensions are approximate and may vary depending on bucket selection.



Boom Options

Mass Boom 6.55 m (21'6")

Stick Options

Mass Stick

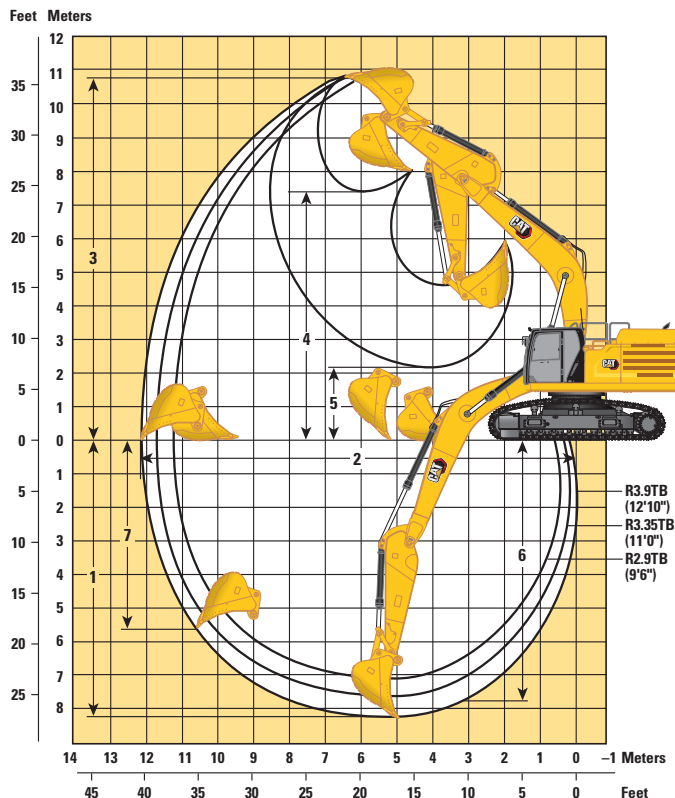
	M3.0UB (9'10")		M3.0UB (9'10")		M2.5UB (8'2")*		M2.5UB (8'2")*	
	mm	ft/in	mm	ft/in	mm	ft/in	mm	ft/in
8 Track Length with Triple Grouser Shoes	5370	17'7"	5370	17'7"	5370	17'7"	5370	17'7"
9 Track Gauge	2740	9'0"	2740	9'0"	2740	9'0"	2740	9'0"
Track Width:								
600 mm (24") Shoes	3340	10'11"	3340	10'11"	3340	10'11"	3340	10'11"
750 mm (30") Shoes	3490	11'5"	3490	11'5"	3490	11'5"	3490	11'5"
900 mm (35") Shoes	3640	11'11"	3640	11'11"	3640	11'11"	3640	11'11"
10 Undercarriage Width (with steps):								
600 mm (24") Shoes	3530	11'7"	3530	11'7"	3530	11'7"	3530	11'7"
750 mm (30") Shoes	3530	11'7"	3530	11'7"	3530	11'7"	3530	11'7"
900 mm (35") Shoes	3640	11'11"	3640	11'11"	3640	11'11"	3640	11'11"
Bucket Type	SD		SD		SD		SD	
Bucket Capacity	3.21 m ³	4.20 yd ³	3.50 m ³	4.58 yd ³	3.21 m ³	4.20 yd ³	3.50 m ³	4.58 yd ³
Bucket Tip Radius	2086	6'10"	2108	6'11"	2086	6'10"	2108	6'11"

*M2.5 is not offered to Turkey

352 Hydraulic Excavator Specifications

Working Ranges and Forces

All dimensions are approximate and may vary depending on bucket selection.



Boom Options

Reach Boom
6.9 m (22'8")

Stick Options

Reach Stick

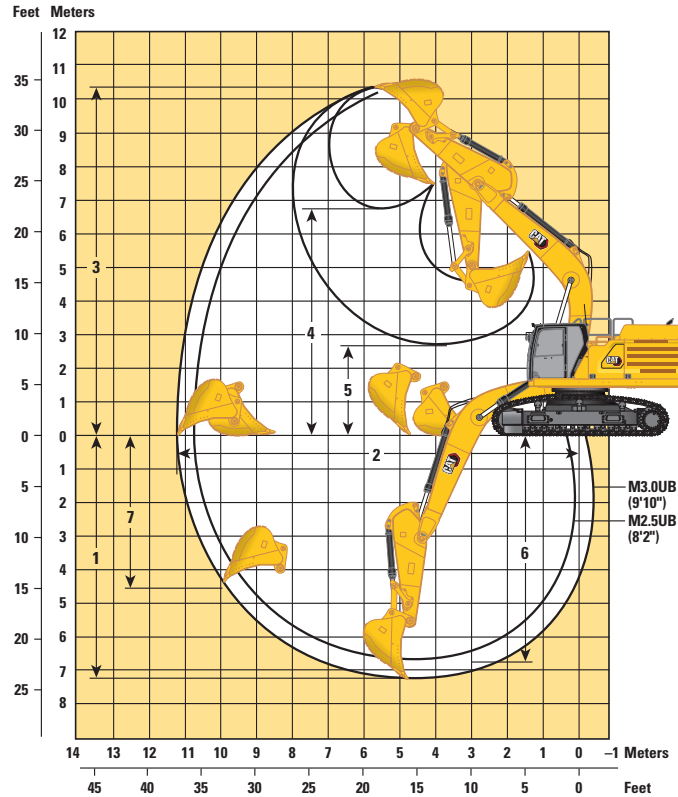
	R3.9TB (12'10")		R3.35TB (11'0")		R2.9TB (9'6")	
	mm	ft/in	mm	ft/in	mm	ft/in
1 Maximum Digging Depth	8230	27'0"	7680	25'2"	7230	23'9"
2 Maximum Reach at Ground Line	12 170	39'11"	11 760	38'7"	11 340	37'2"
3 Maximum Cutting Height	10 640	34'11"	10 740	35'3"	10 560	34'8"
4 Maximum Loading Height	7400	24'3"	7410	24'4"	7230	23'9"
5 Minimum Loading Height	2180	7'2"	2730	8'11"	3180	10'5"
6 Maximum Depth Cut for 2440 mm (8'0") Level Bottom	7790	25'7"	7240	23'9"	6790	22'3"
7 Maximum Vertical Wall Digging Depth	5610	18'5"	5510	18'1"	5100	16'9"
Bucket Digging Force (ISO)	266 kN	59,800 lbf	266 kN	59,800 lbf	266 kN	59,800 lbf
Stick Digging Force (ISO)	184 kN	41,400 lbf	201 kN	45,200 lbf	220 kN	49,500 lbf
Bucket Type	HD		HD		HD	
Bucket Capacity	2.90 m ³	3.79 yd ³	2.90 m ³	3.79 yd ³	2.90 m ³	3.79 yd ³
Bucket Tip Radius	1912 mm	6'3"	1912 mm	6'3"	1912 mm	6'3"

(continued on next page)

352 Hydraulic Excavator Specifications

Working Ranges and Forces (continued)

All dimensions are approximate and may vary depending on bucket selection.



Boom Options

Mass Boom
6.55 m (21'6")

Stick Options

Mass Stick

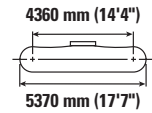
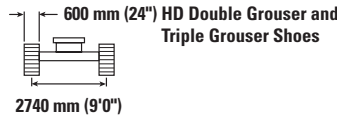
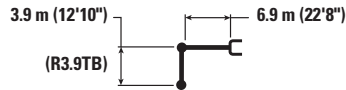
M3.0UB (9'10")

M2.5UB (8'2")

	M3.0UB (9'10")		M2.5UB (8'2")	
1 Maximum Digging Depth	7290 mm	23'11"	6790 mm	22'3"
2 Maximum Reach at Ground Line	11 260 mm	36'11"	10 790 mm	35'5"
3 Maximum Cutting Height	10 290 mm	33'9"	10 100 mm	33'2"
4 Maximum Loading Height	6760 mm	22'2"	6560 mm	21'6"
5 Minimum Loading Height	2590 mm	8'6"	3090 mm	10'2"
6 Maximum Depth Cut for 2440 mm (8'0") Level Bottom	6790 mm	22'3"	6290 mm	20'8"
7 Maximum Vertical Wall Digging Depth	4610 mm	15'1"	4170 mm	13'8"
Bucket Digging Force (ISO)	292 kN	65,600 lbf	292 kN	65,600 lbf
Stick Digging Force (ISO)	211 kN	47,400 lbf	240 kN	54,000 lbf
Bucket Type	SD		SD	
Bucket Capacity	3.50 m ³	4.58 yd ³	3.50 m ³	4.58 yd ³
Bucket Tip Radius	2106 mm	6'11"	2106 mm	6'11"

352 Hydraulic Excavator Specifications

Reach Boom Lift Capacities – Counterweight: 9.8 mt (21,605 lb) – without Bucket, Heavy Lift: On



Reach (m/ft)	Unit	1.5 m/5.0 ft		3.0 m/10.0 ft		4.5 m/15.0 ft		6.0 m/20.0 ft		7.5 m/25.0 ft		9.0 m/30.0 ft		m/ft/in		
		kg/lb	kg/lb	kg/lb	kg/lb	kg/lb	kg/lb	kg/lb	kg/lb	kg/lb	kg/lb	kg/lb	kg/lb	kg/lb	kg/lb	kg/lb
9.0 m 30.0 ft	kg lb									*18,750	*18,750			*7900 *17,500	*7900 *17,500	7.86 25'4"
7.5 m 25.0 ft	kg lb													*7550 *16,650	*7550 *16,650	8.97 29'1"
6.0 m 20.0 ft	kg lb									*11 700 *25,550	11 300 24,350	*11 150 *23,000	8400 18,050	*7450 *16,450	7400 16,350	9.72 31'8"
4.5 m 15.0 ft	kg lb							*14 950 *32,300	*14 950 *32,300	*12 900 *28,000	10 900 23,500	*11 700 *25,450	8200 17,650	*7600 *16,700	6700 14,800	10.19 33'4"
3.0 m 10.0 ft	kg lb					*23 950 *51,450	21 950 47,300	*17 450 *37,700	14 400 31,050	*14 250 *30,950	10 400 22,450	*12 400 26,900	7950 17,100	*7950 *17,450	6300 13,900	10.42 34'1"
1.5 m 5.0 ft	kg lb					*25 800 *59,600	20 450 44,050	*19 650 *42,450	13 600 29,350	*15 550 *33,650	9950 21,500	12 200 26,300	7700 16,550	*8550 *18,750	6200 13,600	10.43 34'2"
0 m 0 ft	kg lb					*23 800 *55,050	19 750 42,500	*20 900 *45,250	13 100 28,200	15 700 33,750	9600 20,750	12 000 25,800	7500 16,100	*9450 *20,800	6250 13,750	10.22 33'6"
-1.5 m -5.0 ft	kg lb			*15 300 *34,450	*15 300 *34,450	*28 350 *61,650	19 550 42,050	*21 150 *45,800	12 800 27,600	15 450 33,300	9450 20,300	11 850 25,550	7350 15,850	10 600 23,350	6600 14,550	9.77 32'0"
-3.0 m -10.0 ft	kg lb	*38,550	*38,550	*22 350 *50,350	*22 350 *50,350	*26 650 *57,700	19 650 42,200	*20 250 *43,850	12 800 27,550	15 450 33,200	9400 20,250	11 900 26,150	7400 16,250	11 800 26,150	7350 16,250	9.05 29'6"
-4.5 m -15.0 ft	kg lb			*31 250 *67,450	*31 250 *67,450	*23 300 *50,300	19 950 42,900	*18 050 *38,750	12 950 27,900	*13 900 *29,600	9550 20,600			*12 600 *27,800	8850 19,650	7.98 25'11"
-6.0 m -20.0 ft	kg lb					*17 600 *37,250	*17 600 *37,250	*13 300 *27,600	*13 300 *27,600					*12 150 *26,550	*12 150 *26,550	6.38 20'5"



ISO 10567:2007

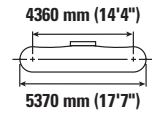
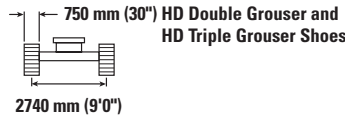
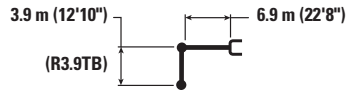


* Indicates that the load is limited by hydraulic lifting capacity rather than tipping load. The above loads are in compliance with hydraulic excavator lift capacity standard ISO 10567:2007. They do not exceed 87% of hydraulic lifting capacity or 75% of tipping load. Weight of all lifting accessories must be deducted from the above lifting capacities. Lifting capacities are based on the machine standing on a firm, uniform supporting surface.

Always refer to the appropriate Operation and Maintenance Manual for specific product information.

352 Hydraulic Excavator Specifications

Reach Boom Lift Capacities – Counterweight: 9.8 mt (21,605 lb) – without Bucket, Heavy Lift: On



		1.5 m/5.0 ft		3.0 m/10.0 ft		4.5 m/15.0 ft		6.0 m/20.0 ft		7.5 m/25.0 ft		9.0 m/30.0 ft		m ft/in		
9.0 m 30.0 ft	kg lb									*18,750	*18,750			*7900 *17,500	*7900 *17,500	7.86 25'4"
7.5 m 25.0 ft	kg lb													*7550 *16,650	*7550 *16,650	8.97 29'1"
6.0 m 20.0 ft	kg lb								*11 700 *25,550	11 450 24,650	*11 150 *23,000	8550 18,300	*7450 *16,450	*7450 *16,450	9.72 31'8"	
4.5 m 15.0 ft	kg lb						*14 950 *32,300	*14 950 *32,300	*12 900 *28,000	11 050 23,800	*11 700 *25,450	8350 17,900	*7600 *16,700	6800 15,000	10.19 33'4"	
3.0 m 10.0 ft	kg lb				*23 950 *51,450	22 200 47,950	*17 450 *37,700	14 600 31,500	*14 250 *30,950	10 550 22,750	*12 400 *27,000	8050 17,350	*7950 *17,450	6400 14,150	10.42 34'1"	
1.5 m 5.0 ft	kg lb				*25 800 *59,600	20 750 44,700	*19 650 *42,450	13 800 29,750	*15 550 *33,650	10 100 21,800	12 400 *18,800	7800 16,800	*8550 *18,750	6250 13,800	10.43 34'2"	
0 m 0 ft	kg lb				*23 800 *55,050	20 050 43,100	*20 900 *45,250	13 250 28,600	15 950 34,300	9750 21,050	12 200 26,200	7600 16,350	*9450 *20,800	6350 14,000	10.22 33'6"	
-1.5 m -5.0 ft	kg lb			*15 300 *34,450	*15 300 *34,450	*28 350 *61,650	19 850 42,650	*21 150 *45,800	13 000 28,000	15 700 33,800	9550 20,600	12 050 25,950	7500 16,100	10 750 23,700	6700 14,800	9.77 32'0"
-3.0 m -10.0 ft	kg lb	*38,550	*38,550	*22 350 *50,350	*22 350 *50,350	*26 650 *57,700	19 900 42,800	*20 250 *43,850	12 950 27,950	15 650 33,750	9550 20,550	12 100 26,550	7500 16,500	12 000 26,550	7450 16,500	9.05 29'6"
-4.5 m -15.0 ft	kg lb			*31 250 *67,450	*31 250 *67,450	*23 300 *50,300	20 250 43,500	*18 050 *38,750	13 150 28,350	*13 900 *29,600	9700 20,900		*12 600 *27,800	8950 19,950	7.98 25'11"	
-6.0 m -20.0 ft	kg lb				*17 600 *37,250	*17 600 *37,250	*13 300 *27,600	*13 300 *27,600					*12 150 *26,550	*12 150 *26,550	6.38 20'5"	



ISO 10567:2007

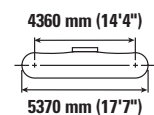
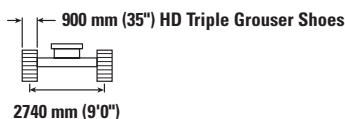
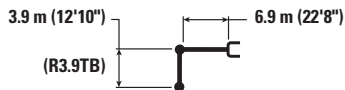


* Indicates that the load is limited by hydraulic lifting capacity rather than tipping load. The above loads are in compliance with hydraulic excavator lift capacity standard ISO 10567:2007. They do not exceed 87% of hydraulic lifting capacity or 75% of tipping load. Weight of all lifting accessories must be deducted from the above lifting capacities. Lifting capacities are based on the machine standing on a firm, uniform supporting surface.

Always refer to the appropriate Operation and Maintenance Manual for specific product information.

352 Hydraulic Excavator Specifications

Reach Boom Lift Capacities – Counterweight: 9.8 mt (21,605 lb) – without Bucket, Heavy Lift: On



		1.5 m/5.0 ft		3.0 m/10.0 ft		4.5 m/15.0 ft		6.0 m/20.0 ft		7.5 m/25.0 ft		9.0 m/30.0 ft		m ft/in		
9.0 m 30.0 ft	kg lb									*18,750	*18,750			*7900 *17,500	*7900 *17,500	7.86 25'4"
7.5 m 25.0 ft	kg lb													*7550 *16,650	*7550 *16,650	8.97 29'1"
6.0 m 20.0 ft	kg lb								*11 700 *25,550	11 550 24,900	*11 150 *23,000	8600 18,500	*7450 *16,450	*7450 *16,450	9.72 31'8"	
4.5 m 15.0 ft	kg lb						*14 950 *32,300	*14 950 *32,300	*12 900 *28,000	11 150 24,050	*11 700 *25,450	8400 18,100	*7600 *16,700	6850 15,150	10.19 33'4"	
3.0 m 10.0 ft	kg lb				*23 950 *51,450	22 450 48,400	*17 450 *37,700	14 750 31,800	*14 250 *30,950	10 700 23,000	*12 400 *27,000	8150 17,550	*7950 *17,450	6500 14,300	10.42 34'1"	
1.5 m 5.0 ft	kg lb				*25 800 *59,600	20 950 45,150	*19 650 *42,450	13 950 30,050	*15 550 *33,650	10 200 22,050	12 550 27,000	7900 17,000	*8550 *18,750	6350 13,950	10.43 34'2"	
0 m 0 ft	kg lb				*23 800 *55,050	20 250 43,600	*20 900 *45,250	13 400 28,900	16 150 34,700	9900 21,300	12 350 26,550	7700 16,550	*9450 *20,800	6450 14,150	10.22 33'6"	
-1.5 m -5.0 ft	kg lb			*15 300 *34,450	*15 300 *34,450	*28 350 *61,650	20 050 43,100	*21 150 *45,800	13 150 28,350	15 900 34,200	9700 20,850	12 200 26,300	7550 16,300	10 900 24,000	6800 14,950	9.77 32'0"
-3.0 m -10.0 ft	kg lb	*38,550	*38,550	*22 350 *50,350	*22 350 *50,350	*26 650 *57,700	20 150 43,300	*20 250 *43,850	13 100 28,250	15 850 34,150	9650 20,800	12 250 26,900	7600 16,700	12 150 26,900	7550 16,700	9.05 29'6"
-4.5 m -15.0 ft	kg lb			*31 250 *67,450	*31 250 *67,450	*23 300 *50,300	20 450 44,000	*18 050 *38,750	13 300 28,650	*13 900 *29,600	9800 21,150			*12 600 *27,800	9050 20,200	7.98 25'11"
-6.0 m -20.0 ft	kg lb					*17 600 *37,250	*17 600 *37,250	*13 300 *27,600	*13 300 *27,600					*12 150 *26,550	*12 150 *26,550	6.38 20'5"



ISO 10567:2007

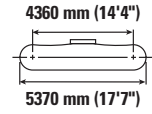
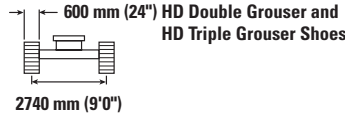
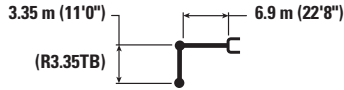


* Indicates that the load is limited by hydraulic lifting capacity rather than tipping load. The above loads are in compliance with hydraulic excavator lift capacity standard ISO 10567:2007. They do not exceed 87% of hydraulic lifting capacity or 75% of tipping load. Weight of all lifting accessories must be deducted from the above lifting capacities. Lifting capacities are based on the machine standing on a firm, uniform supporting surface.

Always refer to the appropriate Operation and Maintenance Manual for specific product information.

352 Hydraulic Excavator Specifications

Reach Boom Lift Capacities – Counterweight: 9.8 mt (21,605 lb) – without Bucket, Heavy Lift: On



		3.0 m/10.0 ft		4.5 m/15.0 ft		6.0 m/20.0 ft		7.5 m/25.0 ft		9.0 m/30.0 ft		m ft/in		
9.0 m 30.0 ft	kg lb											*9000 *20,000	*9000 *20,000	7.30 23'5"
7.5 m 25.0 ft	kg lb							*12 000 *26,350	11 400 24,450			*8500 *18,750	*8500 *18,750	8.48 27'6"
6.0 m 20.0 ft	kg lb							*12 550 *27,400	11 150 24,050	*10 750 *20,250	8300 17,800	*8350 *18,350	7900 17,500	9.27 30'3"
4.5 m 15.0 ft	kg lb			*20 850 *44,650	*20 850 *44,650	*16 100 *34,750	15 050 32,500	*13 650 *29,700	10 800 23,250	*12 300 *26,850	8150 17,500	*8450 *18,550	7100 15,750	9.77 31'11"
3.0 m 10.0 ft	kg lb			*25 900 *55,550	21 400 46,200	*18 500 *39,900	14 200 30,650	*14 950 *32,400	10 350 22,300	12 450 26,800	7900 17,000	*8800 *19,300	6700 14,800	10.01 32'9"
1.5 m 5.0 ft	kg lb			*18 600 *44,500	*18 600 43,550	*20 400 *44,050	13 500 29,150	16 050 34,500	9950 21,400	12 200 26,300	7700 16,550	*9400 *20,650	6600 14,500	10.02 32'10"
0 m 0 ft	kg lb			*20 950 *48,650	19 800 42,600	*21 300 *46,100	13 100 28,200	15 700 33,800	9650 20,800	12 050 25,900	7550 16,200	*10 400 *22,900	6700 14,750	9.80 32'1"
-1.5 m -5.0 ft	kg lb	*14 900 *33,650	*14 900 *33,650	*27 900 *60,550	19 750 42,450	*21 100 *45,700	12 900 27,850	15 550 33,450	9500 20,500	11 950 25,800	7450 16,100	11 400 25,150	7150 15,700	9.33 30'6"
-3.0 m -10.0 ft	kg lb	*23 850 *53,850	*23 850 *53,850	*25 550 *55,350	19 950 42,850	*19 750 *42,750	12 950 27,900	*15 550 *33,500	9550 20,550			*12 850 *28,350	8050 17,800	8.57 28'0"
-4.5 m -15.0 ft	kg lb	*27 650 *59,650	*27 650 *59,650	*21 550 *46,450	20 300 43,700	*16 850 *36,050	13 200 28,500					*12 700 *27,850	9950 22,150	7.43 24'1"



ISO 10567:2007

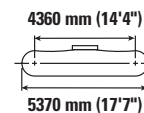
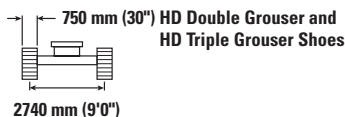


* Indicates that the load is limited by hydraulic lifting capacity rather than tipping load. The above loads are in compliance with hydraulic excavator lift capacity standard ISO 10567:2007. They do not exceed 87% of hydraulic lifting capacity or 75% of tipping load. Weight of all lifting accessories must be deducted from the above lifting capacities. Lifting capacities are based on the machine standing on a firm, uniform supporting surface.

Always refer to the appropriate Operation and Maintenance Manual for specific product information.

352 Hydraulic Excavator Specifications

Reach Boom Lift Capacities – Counterweight: 9.8 mt (21,605 lb) – without Bucket, Heavy Lift: On



		3.0 m/10.0 ft		4.5 m/15.0 ft		6.0 m/20.0 ft		7.5 m/25.0 ft		9.0 m/30.0 ft				m ft/in
9.0 m 30.0 ft	kg lb											*9000 *20,000	*9000 *20,000	7.30 23'5"
7.5 m 25.0 ft	kg lb							*12 000 *26,350	11 550 24,750			*8500 *18,750	*8500 *18,750	8.48 27'6"
6.0 m 20.0 ft	kg lb							*12 550 *27,400	11 300 24,350	*10 750 *20,250	8400 18,050	*8350 *18,350	8000 17,750	9.27 30'3"
4.5 m 15.0 ft	kg lb			*20 850 *44,650	*20 850 *44,650	*16 100 *34,750	15 250 32,900	*13 650 *29,700	10 950 23,550	*12 300 *26,850	8250 17,750	*8450 *18,550	7250 15,950	9.77 31'11"
3.0 m 10.0 ft	kg lb			*25 900 *55,550	21 700 46,850	*18 500 *39,900	14 400 31,050	*14 950 *32,400	10 500 22,600	12 650 27,200	8050 17,250	*8800 *19,300	6800 15,050	10.01 32'9"
1.5 m 5.0 ft	kg lb			*18 600 *44,500	*18 600 44,200	*20 400 *44,050	13 700 29,550	*16 050 *34,800	10 100 21,750	12 400 26,700	7800 16,800	*9400 *20,650	6700 14,700	10.02 32'10"
0 m 0 ft	kg lb			*20 950 *48,650	20 100 43,200	*21 300 *46,100	13 300 28,600	15 950 34,350	9800 21,100	12 250 26,300	7650 16,450	*10 400 *22,900	6800 15,000	9.80 32'1"
-1.5 m -5.0 ft	kg lb	*14 900 *33,650	*14 900 *33,650	*27 900 *60,550	20 050 43,100	*21 100 *45,700	13 100 28,250	15 800 34,000	9650 20,800	12 150 26,200	7600 16,350	11 600 25,550	7250 15,950	9.33 30'6"
-3.0 m -10.0 ft	kg lb	*23 850 *53,850	*23 850 *53,850	*25 550 *55,350	20 200 43,450	*19 750 *42,750	13 150 28,350	*15 550 *33,500	9700 20,900			*12 850 *28,350	8150 18,050	8.57 28'0"
-4.5 m -15.0 ft	kg lb	*27 650 *59,650	*27 650 *59,650	*21 550 *46,450	20 600 44,300	*16 850 *36,050	13 400 28,900					*12 700 *27,850	10 100 22,500	7.43 24'1"



ISO 10567:2007

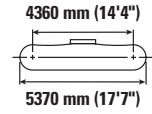
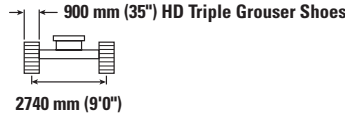
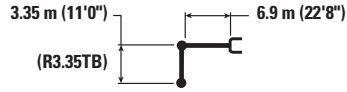


* Indicates that the load is limited by hydraulic lifting capacity rather than tipping load. The above loads are in compliance with hydraulic excavator lift capacity standard ISO 10567:2007. They do not exceed 87% of hydraulic lifting capacity or 75% of tipping load. Weight of all lifting accessories must be deducted from the above lifting capacities. Lifting capacities are based on the machine standing on a firm, uniform supporting surface.

Always refer to the appropriate Operation and Maintenance Manual for specific product information.

352 Hydraulic Excavator Specifications

Reach Boom Lift Capacities – Counterweight: 9.8 mt (21,605 lb) – without Bucket, Heavy Lift: On



		3.0 m/10.0 ft		4.5 m/15.0 ft		6.0 m/20.0 ft		7.5 m/25.0 ft		9.0 m/30.0 ft		m ft/in		
9.0 m 30.0 ft	kg lb											*9000 *20,000	*9000 *20,000	7.30 23'5"
7.5 m 25.0 ft	kg lb							*12 000 *26,350	11 650 25,000			*8500 *18,750	*8500 *18,750	8.48 27'6"
6.0 m 20.0 ft	kg lb							*12 550 *27,400	11 400 24,600	*10 750 8500	8500	*8350 *18,350	8100 17,950	9.27 30'3"
4.5 m 15.0 ft	kg lb			*20 850 *44,650	*20 850 *44,650	*16 100 *34,750	15 400 33,200	*13 650 *29,700	11 050 23,800	*12 300 *26,850	8350 17,950	*8450 *18,550	7300 16,150	9.77 31'11"
3.0 m 10.0 ft	kg lb			*25 900 *55,550	21 900 47,300	*18 500 *39,900	14 550 31,400	*14 950 *32,400	10 600 22,850	12 800 27,550	8100 17,450	*8800 *19,300	6900 15,200	10.01 32'9"
1.5 m 5.0 ft	kg lb			*18 600 *44,500	*18 600 *44,500	*20 400 *44,050	13 850 29,850	*16 050 *34,800	10 200 21,950	12 550 27,000	7900 17,000	*9400 *20,650	6750 14,900	10.02 32'10"
0 m 0 ft	kg lb			*20 950 *48,650	20 300 43,700	*21 300 *46,100	13 450 28,950	16 150 34,750	9900 21,350	12 350 26,650	7750 16,650	*10 400 *22,900	6900 15,150	9.80 32'1"
-1.5 m -5.0 ft	kg lb	*14 900 *33,650	*14 900 *33,650	*27 900 *60,550	20 250 43,550	*21 100 *45,700	13 250 28,550	16 000 34,400	9750 21,050	12 300 26,500	7650 16,550	11 700 25,850	7350 16,150	9.33 30'6"
-3.0 m -10.0 ft	kg lb	*23 850 *53,850	*23 850 *53,850	*25 550 *55,350	20 450 43,900	*19 750 *42,750	13 300 28,650	*15 550 *33,500	9800 21,100			*12 850 *28,350	8250 18,250	8.57 28'0"
-4.5 m -15.0 ft	kg lb	*27 650 *59,650	*27 650 *59,650	*21 550 *46,450	20 800 44,800	*16 850 *36,050	13 550 29,200					*12 700 *27,850	10 200 22,750	7.43 24'1"



ISO 10567:2007

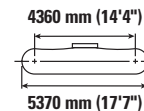
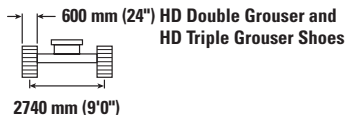
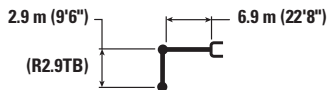


* Indicates that the load is limited by hydraulic lifting capacity rather than tipping load. The above loads are in compliance with hydraulic excavator lift capacity standard ISO 10567:2007. They do not exceed 87% of hydraulic lifting capacity or 75% of tipping load. Weight of all lifting accessories must be deducted from the above lifting capacities. Lifting capacities are based on the machine standing on a firm, uniform supporting surface.

Always refer to the appropriate Operation and Maintenance Manual for specific product information.

352 Hydraulic Excavator Specifications

Reach Boom Lift Capacities – Counterweight: 9.8 mt (21,605 lb) – without Bucket, Heavy Lift: On



		3.0 m/10.0 ft		4.5 m/15.0 ft		6.0 m/20.0 ft		7.5 m/25.0 ft		9.0 m/30.0 ft		m ft/in		
9.0 m 30.0 ft	kg lb											*10 750 *23,950	*10 750 *23,950	6.72 21'6"
7.5 m 25.0 ft	kg lb							*12 800 *27,950	11 250 24,100			*10 050 *22,200	*10 050 *22,200	7.99 25'11"
6.0 m 20.0 ft	kg lb					*14 800 *32,100	*14 800 *32,100	*13 250 *28,850	11 050 23,800			*9850 *21,700	8500 18,850	8.83 28'9"
4.5 m 15.0 ft	kg lb			*22 500 *48,150	*22 500 *48,150	*16 950 *36,600	14 850 32,050	*14 250 *30,950	10 700 23,050	12 650 27,150	8100 17,350	*10 000 *22,000	7600 16,800	9.34 30'6"
3.0 m 10.0 ft	kg lb			*19 200 *50,000	*19 200 *45,200	*19 200 *41,500	14 050 30,300	*15 450 *33,450	10 250 22,150	12 450 26,700	7900 16,950	*10 450 *22,950	7150 15,750	9.60 31'5"
1.5 m 5.0 ft	kg lb			*13 650 *33,550	*13 650 *33,550	*20 850 *45,100	13 400 28,950	16 000 34,400	9900 21,350	12 200 26,300	7700 16,550	11 100 24,450	7000 15,450	9.61 31'6"
0 m 0 ft	kg lb			*19 450 *45,450	*19 450 *42,650	*21 400 *46,400	13 100 28,200	15 700 33,800	9650 20,800	12 050 26,000	7550 16,300	11 400 25,100	7150 15,750	9.38 30'9"
-1.5 m -5.0 ft	kg lb		*15 000 *34,100	*15 000 *34,100	*27 100 *58,850	19 900 42,750	*20 900 *45,250	13 000 27,950	15 600 33,600	9550 20,650		12 300 27,100	7700 16,950	8.88 29'1"
-3.0 m -10.0 ft	kg lb		*26 450 *59,850	*26 450 *59,850	*24 350 *52,800	20 100 43,250	*19 150 *41,400	13 100 28,200	*15 000 *32,150	9650 20,850		*13 350 *29,450	8800 19,450	8.08 26'4"
-4.5 m -15.0 ft	kg lb				*19 800 *42,550	*19 800 *42,550	*15 550 *33,050	13 400 28,950				*12 850 *28,250	11 250 25,150	6.86 22'2"



ISO 10567:2007

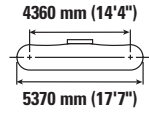
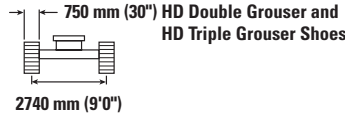
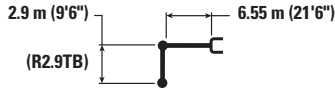


* Indicates that the load is limited by hydraulic lifting capacity rather than tipping load. The above loads are in compliance with hydraulic excavator lift capacity standard ISO 10567:2007. They do not exceed 87% of hydraulic lifting capacity or 75% of tipping load. Weight of all lifting accessories must be deducted from the above lifting capacities. Lifting capacities are based on the machine standing on a firm, uniform supporting surface.

Always refer to the appropriate Operation and Maintenance Manual for specific product information.

352 Hydraulic Excavator Specifications

Reach Boom Lift Capacities – Counterweight: 9.8 mt (21,605 lb) – without Bucket, Heavy Lift: On



		3.0 m/10.0 ft		4.5 m/15.0 ft		6.0 m/20.0 ft		7.5 m/25.0 ft		9.0 m/30.0 ft		m ft/in		
9.0 m 30.0 ft	kg lb											*10 750 *23,950	*10 750 *23,950	6.72 21'6"
7.5 m 25.0 ft	kg lb							*12 800 *27,950	11 350 24,350			*10 050 *22,200	*10 050 *22,200	7.99 25'11"
6.0 m 20.0 ft	kg lb					*14 800 *32,100	*14 800 *32,100	*13 250 *28,850	11 150 24,050			*9850 *21,700	8600 19,050	8.83 28'9"
4.5 m 15.0 ft	kg lb			*22 500 *48,150	*22 500 *48,150	*16 950 *36,600	15 000 32,400	*14 250 *30,950	10 800 23,300	12 800 *27,400	8200 17,550	*10 000 *22,000	7700 17,000	9.34 30'6"
3.0 m 10.0 ft	kg lb			*19 200 *50,000	*19 200 *45,700	*19 200 *41,500	14 200 30,650	*15 450 *33,450	10 400 22,400	12 600 *27,050	8000 17,150	*10 450 *22,950	7250 15,950	9.60 31'5"
1.5 m 5.0 ft	kg lb			*13 650 *33,550	*13 650 *33,550	*20 850 *45,100	13 550 29,300	16 200 34,850	10 000 21,600	12 350 *26,600	7800 16,750	*11 250 *24,700	7100 15,600	9.61 31'6"
0 m 0 ft	kg lb			*19 450 *45,450	*19 450 *43,150	*21 400 *46,400	13 250 28,500	15 900 34,250	9800 21,100	12 200 *26,300	7650 16,500	11 550 *25,400	7250 15,950	9.38 30'9"
-1.5 m -5.0 ft	kg lb			*15 000 *34,100	*15 000 *34,100	*27 100 *58,850	20 100 43,250	*20 900 *45,250	13 150 28,300	15 800 34,050	9700 20,900	12 450 *27,450	7800 17,150	8.88 29'1"
-3.0 m -10.0 ft	kg lb			*26 450 *59,850	*26 450 *59,850	*24 350 *52,800	20 350 43,750	*19 150 *41,400	13 250 28,500	*15 000 *32,150	9750 21,100	*13 350 *29,450	8900 19,700	8.08 26'4"
-4.5 m -15.0 ft	kg lb			*19 800 *42,550	*19 800 *42,550	*15 550 *33,050	13 550 29,300					*12 850 *28,250	11 350 25,450	6.86 22'2"



ISO 10567:2007

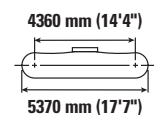
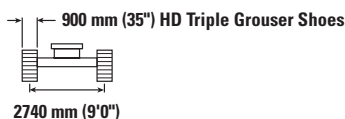
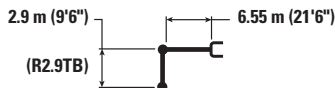


* Indicates that the load is limited by hydraulic lifting capacity rather than tipping load. The above loads are in compliance with hydraulic excavator lift capacity standard ISO 10567:2007. They do not exceed 87% of hydraulic lifting capacity or 75% of tipping load. Weight of all lifting accessories must be deducted from the above lifting capacities. Lifting capacities are based on the machine standing on a firm, uniform supporting surface.

Always refer to the appropriate Operation and Maintenance Manual for specific product information.

352 Hydraulic Excavator Specifications

Reach Boom Lift Capacities – Counterweight: 9.8 mt (21,605 lb) – without Bucket, Heavy Lift: On



		3.0 m/10.0 ft		4.5 m/15.0 ft		6.0 m/20.0 ft		7.5 m/25.0 ft		9.0 m/30.0 ft		m ft/in		
9.0 m 30.0 ft	kg lb											*10 750 *23,950	*10 750 *23,950	6.72 21'6"
7.5 m 25.0 ft	kg lb							*12 800 *27,950	11 500 24,650			*10 050 *22,200	*10 050 *22,200	7.99 25'11"
6.0 m 20.0 ft	kg lb					*14 800 *32,100	*14 800 *32,100	*13 250 *28,850	11 300 24,350			*9850 *21,700	8700 19,300	8.83 28'9"
4.5 m 15.0 ft	kg lb			*22 500 *48,150	*22 500 *48,150	*16 950 *36,600	15 200 32,800	*14 250 *30,950	10 950 23,600	*12 800 *27,400	8300 17,800	*10 000 *22,000	7800 17,250	9.34 30'6"
3.0 m 10.0 ft	kg lb			*19 200 *50,000	*19 200 *46,250	*19 200 *41,500	14 400 31,050	*15 450 *33,450	10 550 22,700	12 750 27,450	8100 17,400	*10 450 *22,950	7350 16,200	9.60 31'5"
1.5 m 5.0 ft	kg lb			*13 650 *33,550	*13 650 *33,550	*20 850 *45,100	13 750 29,650	*16 400 *35,350	10 150 21,900	12 550 27,000	7900 17,000	*11 250 *24,700	7200 15,850	9.61 31'6"
0 m 0 ft	kg lb			*19 450 *45,450	*19 450 *43,700	*21 400 *46,400	13 400 28,900	16 150 34,750	9900 21,350	12 400 26,700	7750 16,750	11 700 25,800	7350 16,200	9.38 30'9"
-1.5 m -5.0 ft	kg lb	*15 000 *34,100	*15 000 *34,100	*27 100 *58,850	20 400 43,800	*20 900 *45,250	13 300 28,700	16 050 34,550	9800 21,200			12 600 27,850	7900 17,400	8.88 29'1"
-3.0 m -10.0 ft	kg lb	*26 450 *59,850	*26 450 *59,850	*24 350 *52,800	20 600 44,300	*19 150 *41,400	13 400 28,900	*15 000 *32,150	9900 21,400			*13 350 *29,450	9050 20,000	8.08 26'4"
-4.5 m -15.0 ft	kg lb			*19 800 *42,550	*19 800 *42,550	*15 550 *33,050	13 750 29,700					*12 850 *28,250	11 500 25,750	6.86 22'2"



ISO 10567:2007

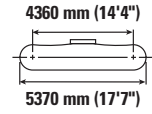
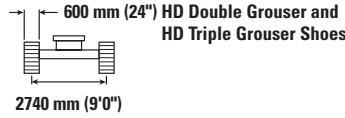
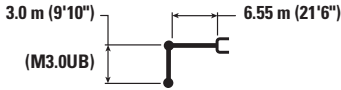


* Indicates that the load is limited by hydraulic lifting capacity rather than tipping load. The above loads are in compliance with hydraulic excavator lift capacity standard ISO 10567:2007. They do not exceed 87% of hydraulic lifting capacity or 75% of tipping load. Weight of all lifting accessories must be deducted from the above lifting capacities. Lifting capacities are based on the machine standing on a firm, uniform supporting surface.

Always refer to the appropriate Operation and Maintenance Manual for specific product information.

352 Hydraulic Excavator Specifications

Mass Boom Lift Capacities – Counterweight: 9.8 mt (21,605 lb) – without Bucket, Heavy Lift: On



		3.0 m/10.0 ft		4.5 m/15.0 ft		6.0 m/20.0 ft		7.5 m/25.0 ft		9.0 m/30.0 ft		m ft/in		
7.5 m 25.0 ft	kg lb							*11 550	11 000			*10 000 *22,100	*10 000 *22,100	7.67 24'10"
6.0 m 20.0 ft	kg lb							*13 000 *28,350	10 850 23,300			*9750 *21,450	8700 19,350	8.54 27'10"
4.5 m 15.0 ft	kg lb			*20 850 *44,800	*20 850 *44,800	*16 200 *35,050	14 800 31,850	*13 850 *30,150	10 500 22,600	*10 800	7800	*9850 *21,650	7700 17,050	9.07 29'8"
3.0 m 10.0 ft	kg lb			*25 650 *55,100	21 050 45,500	*18 450 *39,850	13 900 30,000	*15 000 *32,500	10 050 21,650	12 200 26,150	7600 16,350	*10 250 *22,550	7200 15,850	9.33 30'7"
1.5 m 5.0 ft	kg lb			*22 900 *55,100	19 850 42,750	*20 200 *43,650	13 200 28,450	15 750 33,900	9650 20,750	11 950 25,700	7400 15,950	*11 050 *24,300	7000 15,400	9.34 30'7"
0 m 0 ft	kg lb			*25 950 *60,500	19 400 41,700	*20 950 *45,300	12 750 27,500	15 450 33,250	9350 20,150	11 800	7250	11 600 25,600	7150 15,750	9.11 29'10"
-1.5 m -5.0 ft	kg lb	*17 850 *40,450	*17 850 *40,450	*27 100 *58,850	19 350 41,600	*20 500 *44,400	12 600 27,150	15 300 32,950	9250 19,900			12 600 27,800	7700 17,000	8.60 28'1"
-3.0 m -10.0 ft	kg lb	*29 450 *66,700	*29 450 *66,700	*24 300 *52,600	19 600 42,100	*18 750 *40,400	12 700 27,350	*14 300 *30,450	9350 20,200			*13 500 *29,700	8950 19,850	7.76 25'4"
-4.5 m -15.0 ft	kg lb			*19 300 *41,350	*19 300 *41,350	*14 600 *30,800	13 100 28,250					*12 950 *28,350	11 800 26,500	6.48 20'11"



ISO 10567:2007

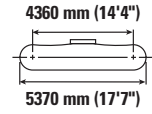
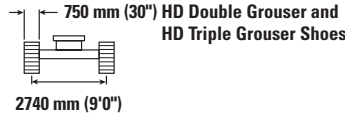
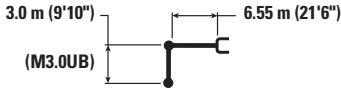


* Indicates that the load is limited by hydraulic lifting capacity rather than tipping load. The above loads are in compliance with hydraulic excavator lift capacity standard ISO 10567:2007. They do not exceed 87% of hydraulic lifting capacity or 75% of tipping load. Weight of all lifting accessories must be deducted from the above lifting capacities. Lifting capacities are based on the machine standing on a firm, uniform supporting surface.

Always refer to the appropriate Operation and Maintenance Manual for specific product information.

352 Hydraulic Excavator Specifications

Mass Boom Lift Capacities – Counterweight: 9.8 mt (21,605 lb) – without Bucket, Heavy Lift: On



		3.0 m/10.0 ft		4.5 m/15.0 ft		6.0 m/20.0 ft		7.5 m/25.0 ft		9.0 m/30.0 ft		m ft/in		
7.5 m 25.0 ft	kg lb							*11 550	11 150			*10 000 *22,100	*10 000 *22,100	7.67 24'10"
6.0 m 20.0 ft	kg lb							*13 000 *28,350	11 000 23,650			*9750 *21,450	8850 19,600	8.54 27'10"
4.5 m 15.0 ft	kg lb			*20 850 *44,800	*20 850 *44,800	*16 200 *35,050	15 000 32,300	*13 850 *30,150	10 650 22,900	*10 800	7900	*9850 *21,650	7800 17,300	9.07 29'8"
3.0 m 10.0 ft	kg lb			*25 650 *55,100	21 350 46,100	*18 450 *39,850	14 100 30,400	*15 000 *32,500	10 200 21,950	12 350 26,600	7750 16,600	*10 250 *22,550	7300 16,100	9.33 30'7"
1.5 m 5.0 ft	kg lb			*22 900 *55,100	20 100 43,350	*20 200 *43,650	13 400 28,850	*15 950 *34,450	9800 21,100	12 150 26,100	7500 16,200	*11 050 *24,300	7100 15,650	9.34 30'7"
0 m 0 ft	kg lb			*25 950 *60,500	19 700 42,350	*20 950 *45,300	12 950 27,900	15 700 33,750	9500 20,450	12 000	7400	11 800 26,000	7300 16,000	9.11 29'10"
-1.5 m -5.0 ft	kg lb	*17 850 *40,450	*17 850 *40,450	*27 100 *58,850	19 650 42,250	*20 500 *44,400	12 800 27,550	15 550 33,500	9400 20,250			12 800 28,250	7850 17,300	8.60 28'1"
-3.0 m -10.0 ft	kg lb	*29 450 *66,700	*29 450 *66,700	*24 300 *52,600	19 850 42,700	*18 750 *40,400	12 900 27,750	*14 300 *30,450	9500 20,500			*13 500 *29,700	9100 20,150	7.76 25'4"
-4.5 m -15.0 ft	kg lb			*19 300 *41,350	*19 300 *41,350	*14 600 *30,800	13 300 28,700					*12 950 *28,350	12 000 26,900	6.48 20'11"



ISO 10567:2007

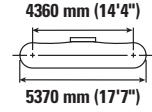
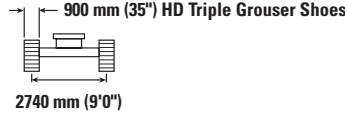
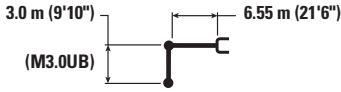




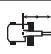

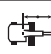

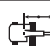

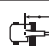

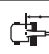

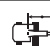
* Indicates that the load is limited by hydraulic lifting capacity rather than tipping load. The above loads are in compliance with hydraulic excavator lift capacity standard ISO 10567:2007. They do not exceed 87% of hydraulic lifting capacity or 75% of tipping load. Weight of all lifting accessories must be deducted from the above lifting capacities. Lifting capacities are based on the machine standing on a firm, uniform supporting surface.

Always refer to the appropriate Operation and Maintenance Manual for specific product information.

352 Hydraulic Excavator Specifications

Mass Boom Lift Capacities – Counterweight: 9.8 mt (21,605 lb) – without Bucket, Heavy Lift: On



		3.0 m/10.0 ft		4.5 m/15.0 ft		6.0 m/20.0 ft		7.5 m/25.0 ft		9.0 m/30.0 ft				
														m ft/in
7.5 m 25.0 ft	kg lb							*11 550	11 250			*10 000 *22,100	*10 000 *22,100	7.67 24'10"
6.0 m 20.0 ft	kg lb							*13 000 *28,350	11 100 23,850			*9750 *21,450	8900 19,850	8.54 27'10"
4.5 m 15.0 ft	kg lb			*20 850 *44,800	*20 850 *44,800	*16 200 *35,050	15 100 32,600	*13 850 *30,150	10 750 23,150	*10 800 8000		*9850 *21,650	7900 17,500	9.07 29'8"
3.0 m 10.0 ft	kg lb			*25 650 *55,100	21 600 46,600	*18 450 *39,850	14 250 30,750	*15 000 *32,500	10 300 22,200	12 500 26,900	7800 16,800	*10 250 *22,550	7400 16,250	9.33 30'7"
1.5 m 5.0 ft	kg lb			*22 900 *55,100	20 350 43,800	*20 200 *43,650	13 550 29,150	*15 950 *34,550	9900 21,300	12 300 26,450	7600 16,350	*11 050 *24,300	7200 15,850	9.34 30'7"
0 m 0 ft	kg lb			*25 950 *60,500	19 900 42,800	*20 950 *45,300	13 100 28,200	15 900 34,150	9600 20,700	12 150 7500		11 950 26,300	7350 16,200	9.11 29'10"
-1.5 m -5.0 ft	kg lb	*17 850 *40,450	*17 850 *40,450	*27 100 *58,850	19 850 42,700	*20 500 *44,400	12 950 27,850	15 750 33,900	9500 20,450			12 950 28,550	7950 17,500	8.60 28'1"
-3.0 m -10.0 ft	kg lb	*29 450 *66,700	*29 450 *66,700	*24 300 *52,600	20 100 43,200	*18 750 *40,400	13 050 28,050	*14 300 *30,450	9600 20,750			*13 500 *29,700	9200 20,400	7.76 25'4"
-4.5 m -15.0 ft	kg lb			*19 300 *41,350	*19 300 *41,350	*14 600 *30,800	13 400 29,000					*12 950 *28,350	12 100 27,200	6.48 20'11"



ISO 10567:2007

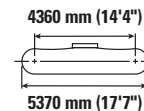
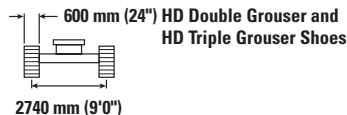
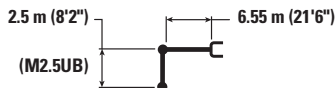






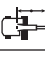

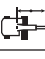
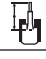
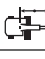

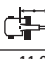
* Indicates that the load is limited by hydraulic lifting capacity rather than tipping load. The above loads are in compliance with hydraulic excavator lift capacity standard ISO 10567:2007. They do not exceed 87% of hydraulic lifting capacity or 75% of tipping load. Weight of all lifting accessories must be deducted from the above lifting capacities. Lifting capacities are based on the machine standing on a firm, uniform supporting surface.

Always refer to the appropriate Operation and Maintenance Manual for specific product information.

352 Hydraulic Excavator Specifications

Mass Boom Lift Capacities – Counterweight: 9.8 mt (21,605 lb) – without Bucket, Heavy Lift: On



		3.0 m/10.0 ft		4.5 m/15.0 ft		6.0 m/20.0 ft		7.5 m/25.0 ft				m ft/in
												
7.5 m 25.0 ft	kg lb									*13 050 *28,900	11 900 26,800	7.11 22'11"
6.0 m 20.0 ft	kg lb					*15 300 *33,250	*15 300 33,100	*13 850 *30,300	10 750 23,100	*12 700 *28,000	9550 21,300	8.03 26'2"
4.5 m 15.0 ft	kg lb			*22 700 *48,650	22 500 48,650	*17 200 *37,200	14 600 31,500	*14 600 *31,700	10 450 22,450	*12 850 *28,300	8400 18,550	8.60 28'1"
3.0 m 10.0 ft	kg lb			*58,400	44,500	*19 300 *41,650	13 800 29,750	*15 550 *33,800	10 050 21,600	12 450 27,450	7800 17,200	8.88 29'1"
1.5 m 5.0 ft	kg lb					*20 750 *44,850	13 150 28,350	15 800 33,950	9650 20,850	12 250 26,950	7600 16,750	8.89 29'1"
0 m 0 ft	kg lb			*24 000 *56,400	19 550 42,000	*21 100 *45,700	12 850 27,650	15 550 33,400	9450 20,350	12 650 27,850	7800 17,200	8.64 28'3"
-1.5 m -5.0 ft	kg lb	*18 050 *41,150	*18 050 *41,150	*26 200 *56,950	19 600 42,150	*20 250 *43,850	12 750 27,450	15 500 33,300	9400 20,250	13 900 30,650	8500 18,800	8.10 26'6"
-3.0 m -10.0 ft	kg lb	*27 950 *60,900	*27 950 *60,900	*22 850 *49,500	19 900 42,800	*17 900 *38,500	12 950 27,850			*14 100 *30,950	10 100 22,450	7.21 23'6"
-4.5 m -15.0 ft	kg lb			*16 950 *36,000	*16 950 *36,000					*12 850 *28,050	*12 850 *28,050	5.80 18'8"



ISO 10567:2007

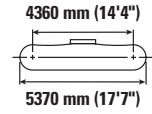
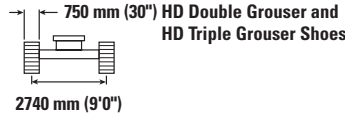
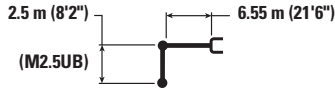








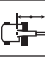

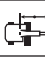

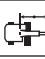
* Indicates that the load is limited by hydraulic lifting capacity rather than tipping load. The above loads are in compliance with hydraulic excavator lift capacity standard ISO 10567:2007. They do not exceed 87% of hydraulic lifting capacity or 75% of tipping load. Weight of all lifting accessories must be deducted from the above lifting capacities. Lifting capacities are based on the machine standing on a firm, uniform supporting surface.

Always refer to the appropriate Operation and Maintenance Manual for specific product information.

352 Hydraulic Excavator Specifications

Mass Boom Lift Capacities – Counterweight: 9.8 mt (21,605 lb) – without Bucket, Heavy Lift: On



		3.0 m/10.0 ft		4.5 m/15.0 ft		6.0 m/20.0 ft		7.5 m/25.0 ft				m ft/in
												
7.5 m 25.0 ft	kg lb									*13 050 *28,900	12 050 27,150	7.11 22'11"
6.0 m 20.0 ft	kg lb					*15 300 *33,250	*15 300 *33,250	*13 850 *30,300	10 900 23,400	*12 700 *28,000	9700 21,600	8.03 26'2"
4.5 m 15.0 ft	kg lb			*22 700 *48,650	*22 700 *48,650	*17 200 *37,200	14 800 31,950	*14 600 *31,700	10 600 22,750	*12 850 *28,300	8500 18,850	8.60 28'1"
3.0 m 10.0 ft	kg lb			*58,400	45,150	*19 300 *41,650	14 000 30,150	*15 550 *33,800	10 150 21,900	12 650 27,900	7900 17,450	8.88 29'1"
1.5 m 5.0 ft	kg lb					*20 750 *44,850	13 350 28,800	16 050 34,500	9800 21,150	12 450 27,400	7750 17,000	8.89 29'1"
0 m 0 ft	kg lb			*24 000 *56,400	19 850 42,650	*21 100 *45,700	13 000 28,050	15 750 33,950	9600 20,650	12 850 28,300	7950 17,450	8.64 28'3"
-1.5 m -5.0 ft	kg lb	*18 050 *41,150	*18 050 *41,150	*26 200 *56,950	19 900 42,750	*20 250 *43,850	12 950 27,900	15 700 33,850	9550 20,600	14 100 31,150	8650 19,100	8.10 26'6"
-3.0 m -10.0 ft	kg lb	*27 950 *60,900	*27 950 *60,900	*22 850 *49,500	20 200 43,400	*17 900 *38,500	13 100 28,300			*14 100 *30,950	10 250 22,800	7.21 23'6"
-4.5 m -15.0 ft	kg lb			*16 950 *36,000	*16 950 *36,000					*12 850 *28,050	*12 850 *28,050	5.80 18'8"



ISO 10567:2007

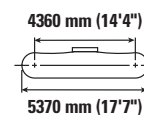
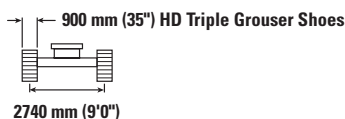
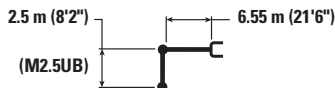






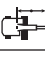

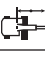




* Indicates that the load is limited by hydraulic lifting capacity rather than tipping load. The above loads are in compliance with hydraulic excavator lift capacity standard ISO 10567:2007. They do not exceed 87% of hydraulic lifting capacity or 75% of tipping load. Weight of all lifting accessories must be deducted from the above lifting capacities. Lifting capacities are based on the machine standing on a firm, uniform supporting surface.

Always refer to the appropriate Operation and Maintenance Manual for specific product information.

352 Hydraulic Excavator Specifications

Mass Boom Lift Capacities – Counterweight: 9.8 mt (21,605 lb) – without Bucket, Heavy Lift: On



		3.0 m/10.0 ft		4.5 m/15.0 ft		6.0 m/20.0 ft		7.5 m/25.0 ft				m ft/in
												
7.5 m 25.0 ft	kg lb									*13 050 *28,900	12 150 27,400	7.11 22'11"
6.0 m 20.0 ft	kg lb					*15 300 *33,250	*15 300 *33,250	*13 850 *30,300	11 000 23,650	*12 700 *28,000	9800 21,850	8.03 26'2"
4.5 m 15.0 ft	kg lb			*22 700 *48,650	*22 700 *48,650	*17 200 *37,200	14 950 32,250	*14 600 *31,700	10 700 23,000	*12 850 *28,300	8600 19,050	8.60 28'1"
3.0 m 10.0 ft	kg lb			*58,400	45,600	*19 300 *41,650	14 150 30,500	*15 550 *33,800	10 300 22,150	12 800 28,250	8000 17,650	8.88 29'1"
1.5 m 5.0 ft	kg lb					*20 750 *44,850	13 500 29,100	16 200 34,900	9900 21,400	12 600 27,700	7800 17,200	8.89 29'1"
0 m 0 ft	kg lb			*24 000 *56,400	20 050 43,100	*21 100 *45,700	13 150 28,350	15 950 34,350	9700 20,900	13 000 28,650	8050 17,700	8.64 28'3"
-1.5 m -5.0 ft	kg lb	*18 050 *41,150	*18 050 *41,150	*26 200 *56,950	20 150 43,250	*20 250 *43,850	13 100 28,200	*15 850 *34,150	9650 20,800	*14 200 *31,300	8750 19,300	8.10 26'6"
-3.0 m -10.0 ft	kg lb	*27 950 *60,900	*27 950 *60,900	*22 850 *49,500	20 400 43,900	*17 900 *38,500	13 250 28,600			*14 100 *30,950	10 400 23,050	7.21 23'6"
-4.5 m -15.0 ft	kg lb			*16 950 *36,000	*16 950 *36,000					*12 850 *28,050	*12 850 *28,050	5.80 18'8"



ISO 10567:2007



* Indicates that the load is limited by hydraulic lifting capacity rather than tipping load. The above loads are in compliance with hydraulic excavator lift capacity standard ISO 10567:2007. They do not exceed 87% of hydraulic lifting capacity or 75% of tipping load. Weight of all lifting accessories must be deducted from the above lifting capacities. Lifting capacities are based on the machine standing on a firm, uniform supporting surface.

Always refer to the appropriate Operation and Maintenance Manual for specific product information.

352 Hydraulic Excavator Specifications

Bucket Specifications and Compatibility

	Linkage	Width		Capacity		Weight		Fill %	9.8 mt (21,605 lb) Counterweight			
		mm	in	m ³	yd ³	kg	lb		6.9 m (22'8") Reach		6.55 m (21'6") Mass	
									R2.9 (9'6")	R3.35 (11'0")	M2.5 (8'2")	M3.0 (9'10")
Pin-On (No Quick Coupler)												
Severe Duty	TB	1900	75	2.80	3.66	2756	6,075	90	⊙	⊖		
	TB	2050	81	3.00	3.92	2760	6,084	90	⊙	⊖		
Heavy Duty	UB	2050	81	3.60	4.71	2968	6,542	100			○	○
Severe Duty Extreme	UB	1650	65	2.70	3.53	3023	6,665	90			●	⊙
Severe Duty	UB	1850	73	3.21	4.20	2929	6,456	90			⊙	⊖
	UB	1950	77	3.40	4.45	3027	6,673	90			⊖	○
Maximum load with pin-on (payload + bucket)								kg	7420	6760	8060	7270
								lb	16,358	14,903	17,769	16,028
With Pin Grabber Coupler												
Severe Duty	TB	1900	75	2.80	3.66	2756	6,075	90	○	◇		
	TB	2050	81	3.00	3.92	2760	6,084	90	○	◇		
Maximum load with coupler (payload + bucket)								kg	6367	5707	7007	6217
								lb	14,036	12,581	15,447	13,706
With CW Coupler												
Heavy Duty	UB	2050	81	3.60	4.71	2968	6,542	100			○	◇
Severe Duty Extreme	UB	1650	65	2.70	3.53	3023	6,665	100			⊖	○
Severe Duty	UB	1850	73	3.21	4.20	2929	6,456	100			○	◇
	UB	1950	77	3.40	4.45	3027	6,673	100			○	◇
Maximum load with coupler (payload + bucket)								kg	6601	5941	7241	6451
								lb	14,553	13,098	15,964	14,222

The above loads are in compliance with hydraulic excavator standard EN474-5:2006 + A3:2013, they do not exceed 87% of hydraulic lifting capacity or 75% of tipping capacity with front linkage fully extended at ground line with bucket curled.

Capacity based on ISO 7451:2007.

Bucket weight with General Duty tips.

Maximum Material Density:

- 2100 kg/m³ (3,500 lb/yd³)
- ⊙ 1800 kg/m³ (3,000 lb/yd³)
- ⊖ 1500 kg/m³ (2,500 lb/yd³)
- 1200 kg/m³ (2,000 lb/yd³)
- ◇ 900 kg/m³ (1,500 lb/yd³)

Caterpillar recommends using appropriate work tools to maximize the value customers receive from our products. Use of work tools, including buckets, which are outside of Caterpillar's recommendations or specifications for weight, dimensions, flows, pressures, etc. may result in less-than-optimal performance, including but not limited to reductions in production, stability, reliability, and component durability. Improper use of a work tool resulting in sweeping, prying, twisting and/or catching of heavy loads will reduce the life of the boom and stick.

352 Hydraulic Excavator Specifications

Attachments Offering Guide – South America

Not all Attachments are available in all regions. Consult your Cat dealer for configurations available in your region.

Match

PIN-ON ATTACHMENTS

Counterweight		9.8 mt (21,605 lb)	
Boom Type		ME	
Stick Length		2.50 m (8'2")	3.00 m (9'10")
Hydraulic Hammers	H160 S	✓	✓
	H180 GC	✓	✓
	H180 GC S	✓	✓
	H180 S	✓	✓
	H190 S	✓	✓
Multi-Processors	MP345 Concrete Cutter Jaw	✓	✓
	MP345 Demolition Jaw	✓	✓
	MP345 Pulverizer Jaw	✓	✓
	MP345 Shear Jaw	✓	✓
	MP345 Concrete Cutter Jaw-Flat Top	✓	✓
	MP345 Demolition Jaw-Flat Top	✓	✓
	MP345 Pulverizer Jaw-Flat Top	✓	✓
MP345 Shear Jaw-Flat Top	✓	✓	
Demolition and Sorting Grapples	G345	✓	✓
Mobile Scrap and Demolition Shears	S3050 Flat Top	✓	✓

CAT PIN GRABBER COUPLER ATTACHMENTS

Counterweight		9.8 mt (21,605 lb)	
Boom Type		ME	
Stick Length		2.50 m (8'2")	3.00 m (9'10")
Hydraulic Hammers	H160 S	✓	✓
	H180 GC	✓	✓
	H180 GC S	✓	✓
	H180 S	✓	✓
	H190 S	✓	✓
Multi-Processors	MP345 Concrete Cutter Jaw	✓	✓
	MP345 Demolition Jaw	✓	✓
	MP345 Pulverizer Jaw	✓	✓
	MP345 Shear Jaw	✓	✓
	MP345 Concrete Cutter Jaw-Flat Top	✓	✓
	MP345 Demolition Jaw-Flat Top	✓	✓
	MP345 Pulverizer Jaw-Flat Top	✓	✓
MP345 Shear Jaw-Flat Top	✓	✓	
Demolition and Sorting Grapples	G345	✓	✓
Mobile Scrap and Demolition Shears	S3050 Flat Top	✓	✓

BOOM-MOUNT ATTACHMENTS

Counterweight		9.8 mt (21,605 lb)	
Boom Type		ME	
Mobile Scrap and Demolition Shears	S2090	✓	

352 Hydraulic Excavator Specifications

Attachments Offering Guide – CIS

Not all Attachments are available in all regions. Consult your Cat dealer for configurations available in your region.

Match
 * Working range front only
 No Match
 1800 kg/m³ (3,000 lb/yd³)
 1200 kg/m³ (2,000 lb/yd³)

PIN-ON ATTACHMENTS

Counterweight		9.8 mt (21,605 lb)				
		Reach			ME	
Boom Type		2.90 m	3.35 m	3.90 m	2.50 m	3.00 m
Stick Length		(9'6")	(11'0")	(12'10")	(8'2")	(9'10")
Hydraulic Hammers	H160 S	✓	✓	✓	✓	✓
	H180 GC	✓	✓	✓	✓	✓
	H180 GC S	✓	✓	✓	✓	✓
	H180 S	✓	✓	✓	✓	✓
	H190 S	✓	✓	✓	✓	✓
Multi-Processors	MP332 Concrete Cutter Jaw	✓	✓	✓		
	MP332 Demolition Jaw	✓	✓	✓		
	MP332 Pulverizer Jaw	✓	✓	✓		
	MP332 Shear Jaw	✓	✓	✓		
	MP332 Tank Shear Jaw	✓	✓	✓		
	MP332 Universal Jaw	✓	✓	✓		
	MP332 Concrete Cutter Jaw-Flat Top	✓	✓	✓		
	MP332 Demolition Jaw-Flat Top	✓	✓	✓		
	MP332 Pulverizer Jaw-Flat Top	✓	✓	✓		
	MP332 Shear Jaw-Flat Top	✓	✓	✓		
	MP332 Tank Shear Jaw-Flat Top	✓	✓	✓		
	MP332 Universal Jaw-Flat Top	✓	✓	✓		
	MP345 Concrete Cutter Jaw	✓	✓	✓	✓	✓
	MP345 Demolition Jaw	✓	✓	✓	✓	✓
	MP345 Pulverizer Jaw	✓	✓	✓	✓	✓
	MP345 Shear Jaw	✓	✓	✓	✓	✓
	MP345 Concrete Cutter Jaw-Flat Top	✓	✓	✓	✓	✓
	MP345 Demolition Jaw-Flat Top	✓	✓	✓	✓	✓
	MP345 Pulverizer Jaw-Flat Top	✓	✓	✓	✓	✓
	MP345 Shear Jaw-Flat Top	✓	✓	✓	✓	✓
	MP365 Concrete Cutter Jaw	✓	✓*			
	MP365 Shear Jaw	✓*				
Demolition and Sorting Grapples	G345	✓	✓	✓	✓	✓
Mobile Scrap and Demolition Shears	S3050 Flat Top	✓	✓	✓	✓	✓
Pulverizers	P232 Secondary Pulverizer	✓	✓	✓		
	P332 Primary Pulverizer	✓	✓	✓		
	P332 Primary Pulverizer-Flat Top	✓	✓	✓		
Orange Peel Grapples	GSH455-1000	●	●	●		
	GSH455-1500	●	●	●		
	GSH455-2000	●	●	○		
	GSH555-1000	●	●	●		
	GSH555-1500	●	●	●		
	GSM50-1250	●	●	●		
	GSM50-1500	●	●	●		
	GSM50-2000	○	○	○		
Clamshell Grapples	CTV30-1700	●	●	●		
	CTV30-1900	●	●	●		
	CTV30-2300	●	○	○		
	CTV30-2700	○	○	○		
	CTV30-2900	○	○			
	CTV30-3100	○				

(continued on next page)

352 Hydraulic Excavator Specifications

Attachments Offering Guide – CIS (continued)

Not all Attachments are available in all regions. Consult your Cat dealer for configurations available in your region.

Match
 * Working range front only
 † Allowed usage on machine less than 50%
 No Match

CAT PIN GRABBER COUPLER ATTACHMENTS

Counterweight		9.8 mt (21,605 lb)				
Boom Type		Reach			ME	
Stick Length		2.90 m (9'6")	3.35 m (11'0")	3.90 m (12'10")	2.50 m (8'2")	3.00 m (9'10")
Hydraulic Hammers	H160 S	✓	✓	✓	✓	✓
	H180 GC	✓	✓	✓	✓	✓
	H180 GC S	✓	✓	✓	✓	✓
	H180 S	✓†	✓†	✓†	✓	✓
	H190 S	✓†*			✓	
Multi-Processors	MP332 Concrete Cutter Jaw	✓	✓	✓		
	MP332 Demolition Jaw	✓	✓	✓		
	MP332 Pulverizer Jaw	✓	✓	✓		
	MP332 Shear Jaw	✓	✓	✓		
	MP332 Tank Shear Jaw	✓	✓	✓		
	MP332 Universal Jaw	✓	✓	✓		
	MP332 Concrete Cutter Jaw-Flat Top	✓	✓	✓		
	MP332 Demolition Jaw-Flat Top	✓	✓	✓		
	MP332 Pulverizer Jaw-Flat Top	✓	✓	✓		
	MP332 Shear Jaw-Flat Top	✓	✓	✓		
	MP332 Tank Shear Jaw-Flat Top	✓	✓	✓		
	MP332 Universal Jaw-Flat Top	✓	✓	✓		
	MP345 Concrete Cutter Jaw	✓	✓	✓*	✓	✓
	MP345 Demolition Jaw	✓	✓*	✓*	✓	✓*
	MP345 Pulverizer Jaw	✓	✓*		✓	✓*
	MP345 Shear Jaw	✓	✓	✓*	✓	✓
	MP345 Concrete Cutter Jaw-Flat Top	✓	✓*		✓	✓*
MP345 Demolition Jaw-Flat Top	✓*			✓*		
MP345 Pulverizer Jaw-Flat Top	✓*			✓*		
MP345 Shear Jaw-Flat Top	✓	✓*		✓	✓*	
Demolition and Sorting Grapples	G345	✓	✓†	✓	✓	✓
Mobile Scrap and Demolition Shears	S3050 Flat Top	✓*			✓*	
Pulverizers	P232 Secondary Pulverizer	✓	✓	✓		
	P332 Primary Pulverizer	✓	✓	✓		
	P332 Primary Pulverizer-Flat Top	✓	✓	✓		

(continued on next page)

352 Hydraulic Excavator Specifications

Attachments Offering Guide – CIS (continued)

Not all Attachments are available in all regions. Consult your Cat dealer for configurations available in your region.

Match * Working range front only No Match

CW-55 DEDICATED COUPLER ATTACHMENTS

Counterweight		9.8 mt (21,605 lb)				
Boom Type		Reach			ME	
Stick Length		2.90 m (9'6")	3.35 m (11'0")	3.90 m (12'10")	2.50 m (8'2")	3.00 m (9'10")
Hydraulic Hammers	H160 S	✓	✓	✓	✓	✓
	H180 GC	✓	✓	✓	✓	✓
	H180 GC S	✓	✓	✓	✓	✓
	H180 S	✓	✓	✓	✓	✓
	H190 S	✓	✓*		✓	✓
Multi-Processors	MP332 Concrete Cutter Jaw	✓	✓	✓		
	MP332 Demolition Jaw	✓	✓	✓		
	MP332 Pulverizer Jaw	✓	✓	✓		
	MP332 Shear Jaw	✓	✓	✓		
	MP332 Tank Shear Jaw	✓	✓	✓		
	MP332 Universal Jaw	✓	✓	✓		
	MP332 Concrete Cutter Jaw-Flat Top	✓	✓	✓		
	MP332 Demolition Jaw-Flat Top	✓	✓	✓		
	MP332 Pulverizer Jaw-Flat Top	✓	✓	✓		
	MP332 Shear Jaw-Flat Top	✓	✓	✓		
	MP332 Tank Shear Jaw-Flat Top	✓	✓	✓		
	MP332 Universal Jaw-Flat Top	✓	✓	✓		
	MP345 Concrete Cutter Jaw	✓	✓	✓	✓	✓
	MP345 Demolition Jaw	✓	✓	✓*	✓	✓
	MP345 Pulverizer Jaw	✓	✓	✓*	✓	✓
	MP345 Shear Jaw	✓	✓	✓	✓	✓
	MP345 Concrete Cutter Jaw	✓	✓*		✓	✓
	MP345 Demolition Jaw	✓	✓*		✓	✓*
	MP345 Pulverizer Jaw	✓	✓*		✓	✓*
	MP345 Shear Jaw	✓	✓*		✓	✓
MP365 Concrete Cutter Jaw				✓*		
Demolition and Sorting Grapples	G345	✓	✓	✓	✓	✓
Mobile Scrap and Demolition Shears	S3050 Flat Top	✓*			✓	✓*
Pulverizers	P232 Secondary Pulverizer	✓	✓	✓		
	P332 Primary Pulverizer	✓	✓	✓		
	P332 Primary Pulverizer-Flat Top	✓	✓	✓		

BOOM-MOUNT ATTACHMENTS

Counterweight		9.8 mt (21,605 lb)	
Boom Type		Reach	ME
Mobile Scrap and Demolition Shears	S2090	✓	✓
	S3070 Flat Top	✓	
	S3090 Flat Top	✓	

352 Hydraulic Excavator Specifications

Attachments Offering Guide – Africa-Middle East

Not all Attachments are available in all regions. Consult your Cat dealer for configurations available in your region.

Match
 * Working range front only
 No Match
 1800 kg/m³ (3,000 lb/yd³)
 1200 kg/m³ (2,000 lb/yd³)

PIN-ON ATTACHMENTS

Counterweight		9.8 mt (21,605 lb)		
Boom Type		Reach	ME	
Stick Length		3.35 m (11'0")	2.50 m (8'2")	3.00 m (9'10")
Hydraulic Hammers	H160 S	✓	✓	✓
	H180 GC	✓	✓	✓
	H180 GC S	✓	✓	✓
	H180 S	✓	✓	✓
	H190 S	✓	✓	✓
Multi-Processors	MP332 Concrete Cutter Jaw	✓		
	MP332 Demolition Jaw	✓		
	MP332 Pulverizer Jaw	✓		
	MP332 Shear Jaw	✓		
	MP332 Tank Shear Jaw	✓		
	MP332 Universal Jaw	✓		
	MP332 Concrete Cutter Jaw-Flat Top	✓		
	MP332 Demolition Jaw-Flat Top	✓		
	MP332 Pulverizer Jaw-Flat Top	✓		
	MP332 Shear Jaw-Flat Top	✓		
	MP332 Tank Shear Jaw-Flat Top	✓		
	MP332 Universal Jaw-Flat Top	✓		
	MP345 Concrete Cutter Jaw	✓	✓	✓
	MP345 Demolition Jaw	✓	✓	✓
	MP345 Pulverizer Jaw	✓	✓	✓
	MP345 Shear Jaw	✓	✓	✓
	MP345 Concrete Cutter Jaw-Flat Top	✓	✓	✓
	MP345 Demolition Jaw-Flat Top	✓	✓	✓
	MP345 Pulverizer Jaw-Flat Top	✓	✓	✓
	MP345 Shear Jaw-Flat Top	✓	✓	✓
MP365 Concrete Cutter Jaw	✓*			
Demolition and Sorting Grapples	G345	✓	✓	✓
Mobile Scrap and Demolition Shears	S3050 Flat Top	✓	✓	✓
Pulverizers	P232 Secondary Pulverizer	✓		
	P332 Primary Pulverizer	✓		
	P332 Primary Pulverizer-Flat Top	✓		
Orange Peel Grapples	GSH455-1000	●		
	GSH455-1500	●		
	GSH455-2000	●		
	GSH555-1000	●		
	GSH555-1500	●		
	GSM50-1000	●		
	GSM50-1250	●		
	GSM50-1500	●		
	GSM50-2000	○		
Clamshell Grapples	CTV30-1700	●		
	CTV30-1900	●		
	CTV30-2300	○		
	CTV30-2700	○		
	CTV30-2900	○		

(continued on next page)

352 Hydraulic Excavator Specifications

Attachments Offering Guide – Africa-Middle East (continued)

Not all Attachments are available in all regions. Consult your Cat dealer for configurations available in your region.

Match
 * Working range front only
 † Allowed usage on machine less than 50%
 No Match

CAT PIN GRABBER COUPLER ATTACHMENTS

Counterweight		9.8 mt (21,605 lb)		
Boom Type		Reach	ME	
Stick Length		3.35 m (11'0")	2.50 m (8'2")	3.00 m (9'10")
Hydraulic Hammers	H160 S	✓	✓	✓
	H180 GC	✓	✓	✓
	H180 GC S	✓	✓	✓
	H180 S	✓†	✓	✓
	H190 S		✓	
Multi-Processors	MP332 Concrete Cutter Jaw	✓		
	MP332 Demolition Jaw	✓		
	MP332 Pulverizer Jaw	✓		
	MP332 Shear Jaw	✓		
	MP332 Tank Shear Jaw	✓		
	MP332 Universal Jaw	✓		
	MP332 Concrete Cutter Jaw-Flat Top	✓		
	MP332 Demolition Jaw-Flat Top	✓		
	MP332 Pulverizer Jaw-Flat Top	✓		
	MP332 Shear Jaw-Flat Top	✓		
	MP332 Tank Shear Jaw-Flat Top	✓		
	MP332 Universal Jaw-Flat Top	✓		
	MP345 Concrete Cutter Jaw	✓	✓	✓
	MP345 Demolition Jaw	✓*	✓	✓*
	MP345 Pulverizer Jaw	✓*	✓	✓*
	MP345 Shear Jaw	✓	✓	✓
	MP345 Concrete Cutter Jaw-Flat Top	✓*	✓	✓*
	MP345 Demolition Jaw-Flat Top		✓*	
	MP345 Pulverizer Jaw-Flat Top		✓*	
	MP345 Shear Jaw-Flat Top	✓*	✓	✓*
Demolition and Sorting Grapples	G345	✓†	✓	✓
Mobile Scrap and Demolition Shears	S3050 Flat Top		✓*	
Pulverizers	P232 Secondary Pulverizer	✓		
	P332 Primary Pulverizer	✓		
	P332 Primary Pulverizer-Flat Top	✓		

(continued on next page)

352 Hydraulic Excavator Specifications

Attachments Offering Guide – Africa-Middle East (continued)

Not all Attachments are available in all regions. Consult your Cat dealer for configurations available in your region.

Match

* Working range front only

No Match

CW-55 DEDICATED COUPLER ATTACHMENTS

Counterweight		9.8 mt (21,605 lb)		
Boom Type		Reach	ME	
Stick Length		3.35 m (11'0")	2.50 m (8'2")	3.00 m (9'10")
Hydraulic Hammers	H160 S	✓	✓	✓
	H180 GC	✓	✓	✓
	H180 GC S	✓	✓	✓
	H180 S	✓	✓	✓
	H190 S	✓*	✓	✓
Multi-Processors	MP332 Concrete Cutter Jaw	✓		
	MP332 Demolition Jaw	✓		
	MP332 Pulverizer Jaw	✓		
	MP332 Shear Jaw	✓		
	MP332 Tank Shear Jaw	✓		
	MP332 Universal Jaw	✓		
	MP332 Concrete Cutter Jaw-Flat Top	✓		
	MP332 Demolition Jaw-Flat Top	✓		
	MP332 Pulverizer Jaw-Flat Top	✓		
	MP332 Shear Jaw-Flat Top	✓		
	MP332 Tank Shear Jaw-Flat Top	✓		
	MP332 Universal Jaw-Flat Top	✓		
	MP345 Concrete Cutter Jaw	✓	✓	✓
	MP345 Demolition Jaw	✓	✓	✓
	MP345 Pulverizer Jaw	✓	✓	✓
	MP345 Shear Jaw	✓	✓	✓
	MP345 Concrete Cutter Jaw-Flat Top	✓*	✓	✓
	MP345 Demolition Jaw-Flat Top	✓*	✓	✓*
	MP345 Pulverizer Jaw-Flat Top	✓*	✓	✓*
	MP345 Shear Jaw-Flat Top	✓*	✓	✓
MP365 Concrete Cutter Jaw		✓*		
Demolition and Sorting Grapples	G345	✓	✓	✓
Mobile Scrap and Demolition Shears	S3050 Flat Top		✓	✓*
Pulverizers	P232 Secondary Pulverizer	✓		
	P332 Primary Pulverizer	✓		
	P332 Primary Pulverizer-Flat Top	✓		

BOOM-MOUNT ATTACHMENTS

Counterweight		9.8 mt (21,605 lb)	
Boom Type		Reach	ME
Mobile Scrap and Demolition Shears	S2090	✓	✓
	S3070 Flat Top	✓	
	S3090 Flat Top	✓	

352 Hydraulic Excavator Specifications

Attachments Offering Guide – Southeast Asia

Not all Attachments are available in all regions. Consult your Cat dealer for configurations available in your region.

Match

PIN-ON ATTACHMENTS

Counterweight		9.8 mt (21,605 lb)			
Boom Type		Reach			ME
Stick Length		3.35 m (11'0")	3.90 m (12'10")	2.50 m (8'2")	3.00 m (9'10")
Hydraulic Hammers	H160 S	✓	✓	✓	✓
	H180 GC	✓	✓	✓	✓
	H180 GC S	✓	✓	✓	✓
	H180 S	✓	✓	✓	✓
	H190 S	✓	✓	✓	✓

Standard and Optional Equipment

Standard and optional equipment may vary. Consult your Cat dealer for details.

	Standard	Optional		Standard	Optional
BOOMS, STICKS AND LINKAGES			ELECTRICAL SYSTEM		
6.55 m (21'6") Mass boom		✓	Maintenance-free 1,000 CCA batteries (×4)	✓	
6.9 m (22'8") Reach boom		✓	Centralized electrical disconnect switch	✓	
2.5 m (8'2") Mass stick		✓ ⁽¹⁾	LED exterior chassis and boom lights	✓	
2.9 m (9'6") Reach stick		✓	Premium surround working lights		✓
3.0 m (9'10") Mass stick		✓	ENGINE		
3.35 m (11'0") Reach stick		✓	4500 m (14,764 ft) altitude capability	✓	
3.9 m (12'10") Reach stick		✓	115 Amp alternator	✓	
TB family bucket linkage with lifting eye		✓	Cold start block heaters		✓
TB family bucket linkage without lifting eye		✓	Three selectable modes: Power, Smart, Eco	✓	
UB family bucket linkage without lifting eye		✓	Auto engine speed control	✓	
CAT TECHNOLOGY			52° C (126° F) high-ambient cooling		✓
Cat Product Link™	✓		Hydraulic reverse fan		✓
Remote Flash	✓		-18° C (0° F) cold start capability	✓	
Remote Troubleshoot	✓		-32° C (-25° F) cold start capability		✓
Cat Grade connectivity		✓	Inlet air heater		✓
Compatibility with radios and base stations from Trimble, Topcon, and Leica		✓	Engine oil sensor		✓
Capability to install 3D grade systems from Trimble, Topcon, and Leica		✓	Double element air filter with integrated precleaner	✓	
Cat Grade with 2D and offset memory		✓	Dual stage four micron main filter	✓	
Cat Grade with Advanced 2D		✓	10 micron primary filter with water separator	✓	
Cat Grade with 3D		✓	Electric fuel priming pump	✓	
Cat Assist:		✓	Secure start with PIN code	✓	
– Grade Assist			Remote disable	✓	
– Boom Assist					
– Bucket Assist					
– Swing Assist					
– Lift Assist					
Cat Payload:		✓			
– Static weigh					
– Semiautomatic calibration					
– Payload/cycle information					
– USB reporting capability					
2D E-Fence:		✓			
– E-ceiling					
– E-floor					
– E-swing					
– E-wall					
– E-cab avoidance					
Auto hammer stop	✓				
Laser catcher		✓			

(continued on next page)

⁽¹⁾Not offered in Turkey

352 Standard and Optional Equipment

Standard and Optional Equipment (continued)

Standard and optional equipment may vary. Consult your Cat dealer for details.

	Standard	Optional		Standard	Optional
HYDRAULIC SYSTEM			SERVICE AND MAINTENANCE		
Boom and stick regeneration circuit	✓		Grouped engine oil and fuel filters	✓	
Electronic main control valve	✓		Scheduled Oil Sampling (S·O·S SM) ports	✓	
Auto heavy lift mode		✓	UNDERCARRIAGE AND STRUCTURES		
Auto dig boost		✓	Long undercarriage	✓	
Auto hydraulic oil warmup	✓		Towing eye on base frame	✓	
Bio hydraulic oil capability	✓		Full-length track guiding guards		✓
Fine swing	✓		Segmented three-piece track guiding guards		✓
Reverse swing damping valve	✓		Swivel guard	✓	
Auto swing parking brake	✓		HD bottom guard	✓	
High performance hydraulic return filter	✓		HD travel motor guards	✓	
Two speed travel	✓		HD rollers		✓
One-way one-pump auxiliary circuit		✓	Grease lubricated track	✓	
Combined two-way two-pump auxiliary circuit		✓	HD swing frame	✓	
SAFETY AND SECURITY			HD swing bearing	✓	
Caterpillar One Key security system	✓		9.8 mt (21,605 lb) counterweight		✓
Lockable external tool/storage box	✓		600 mm (24") double grouser track shoes		✓
Lockable door, fuel, and hydraulic tank locks	✓		750 mm (30") double grouser track shoes		✓
Lockable fuel drain compartment	✓		750 mm (30") triple grouser track shoes		✓
Service platform with anti-skid plate and recessed bolts	✓		900 mm (35") triple grouser track shoes		✓
RH handrail and handhold	✓				
Signaling/warning horn	✓				
Ground-level secondary engine shutoff switch	✓				
Boom lowering check valve		✓			
Stick lowering check valve		✓			
Rear and right-hand-sideview cameras	✓				
360° visibility		✓			
Falling object guard system (not compatible with cab light cover or rain protector)		✓			

Cab Options

	Essential	Deluxe
ROPS, standard sound suppression	●	●
High-resolution 203 mm (8") LCD touchscreen monitor	●	●
High-resolution 254 mm (10") LCD touchscreen monitor	○	○
Auto bi-level air conditioner	●	●
Jog dial for monitor control	●	●
Keyless push-to-start engine control	●	●
Height-adjustable console, infinite with no tool	X	●
Air-suspension Essential seat	●	X
Heated air-suspension Deluxe seat	X	●
51 mm (2") seat belt	●	●
Bluetooth® integrated radio with USB ports	●	X
12V DC outlets	X	●
24V DC outlets	●	X
Document storage	●	●
Overhead storage and rear storage with nets	X	●
Cup holder	X	●
Beverage holder	●	●
Openable two-piece front window	●	●
Rear window emergency exit	●	●
Radial wiper with washer	●	●
Openable polycarbonate skylight hatch	X	●
LED dome light	●	●
Floor welcome light	X	●
Roller front sunscreen	●	●
Roller rear sunscreen	○	●
Roof sunscreen	X	●
Washable floor mat	●	●
Beacon ready	X	●
Cat Stick Steer	○	○

● Standard

○ Optional

X Not available

Dealer Installed Kit and Attachments

Attachments may vary. Consult your Cat dealer for details.

CAB

- Radial lower wiper
- Polycarbonate roof hatch
- LH/RH electrical pedal for tool control
- Rain protector plus cab light cover

GUARDS

- Falling object guard system (not compatible with cab light cover, rain protector)
- Mesh guard full front (not compatible with cab light cover, rain protector)
- Mesh guard lower half front
- Full protecting vandalism guard

ELECTRICAL

- Premium surround lighting



For more complete information on Cat products, dealer services, and industry solutions, visit us on the web at www.cat.com

© 2021 Caterpillar
All rights reserved

Materials and specifications are subject to change without notice. Featured machines in photos may include additional equipment. See your Cat dealer for available options.

CAT, CATERPILLAR, LET'S DO THE WORK, their respective logos, "Caterpillar Corporate Yellow," the "Power Edge" and Cat "Modern Hex" trade dress as well as corporate and product identity used herein, are trademarks of Caterpillar and may not be used without permission.

AEXQ3376 (11-2021)
Build Number: 08A
(Afr-ME, CIS, Indo,
SE Asia, S Am)

