

Insights & Recommendations Tab

The **Insights** app is intended to replace all former versions of monthly Condition Monitoring Health Reports that were previously used.

This new tool differs from monthly reports in a few key ways:

- It is available 24/7, whereas the previous reports were automated to be sent only at the beginning of each month.
- It is always up to date. Previous PDF reports were simply a snapshot in time.
- Most importantly, the report provides both the high-level visuals needed to quickly glean information, as well as the data behind the visuals.

The following Quick Start Guide provides the basic information needed to begin using Insights. As more features become available, we will release more guides like this to ensure you are able to use your data to its full potential.

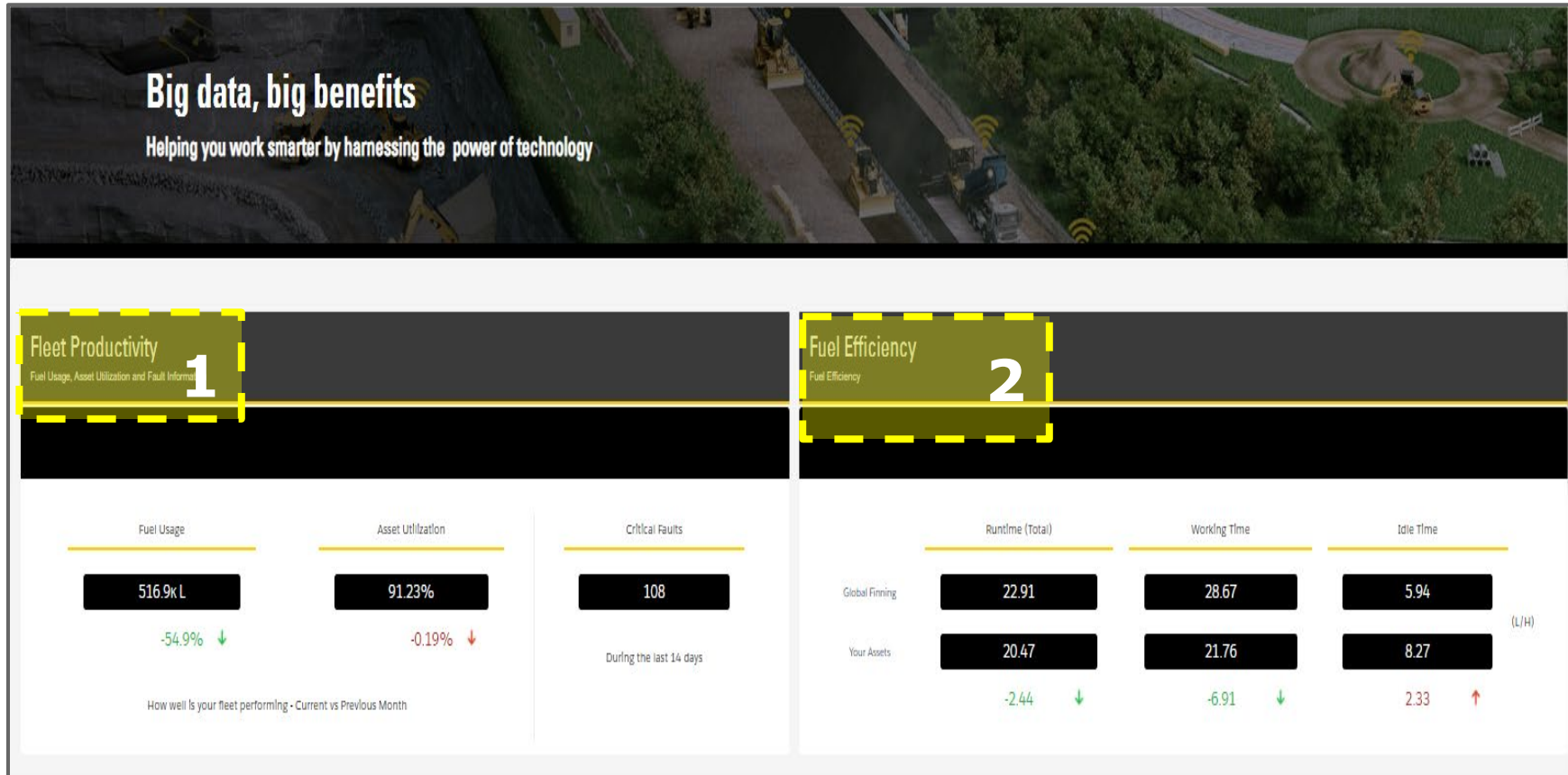
Quick Links:

- [CUBIQ Homepage](#)
- [FAQ's, Help, & Training](#)
- [CUBIQ Webinar Session Registration](#)
- [Our Data Governance Statement](#)

Primary Insights Landing Page:


Insights

This is the overview page that comes up when you click on **Insights** from the menu on the left side of the MFC screen. Click on *Fleet Productivity* (box 1) or *Fuel Efficiency* (box 2) to jump in.



Fleet Productivity Overview:

This is an overview of the fleet info that can be found under each tab, and can be filtered by *Month, Week, or Day* (box 3). It can also be filtered by any of the categories at the top (box 4). Click on *Fuel Usage, Asset Utilization, or Critical Faults* to see deeper details (boxes 5, 6, 7).



Fleet Productivity

Date: All

Region: All

Customer: All

Division: All

Product Family: All

Model: All

Serial Number: All

Asset ID: All

Comparison by:

Month

Week

Day

5

Fuel Usage

516.9k L

-54.9% ↓

6

Asset Utilization

91.23%

-0.19% ↓

7

Critical Faults

108

During the last 14 days

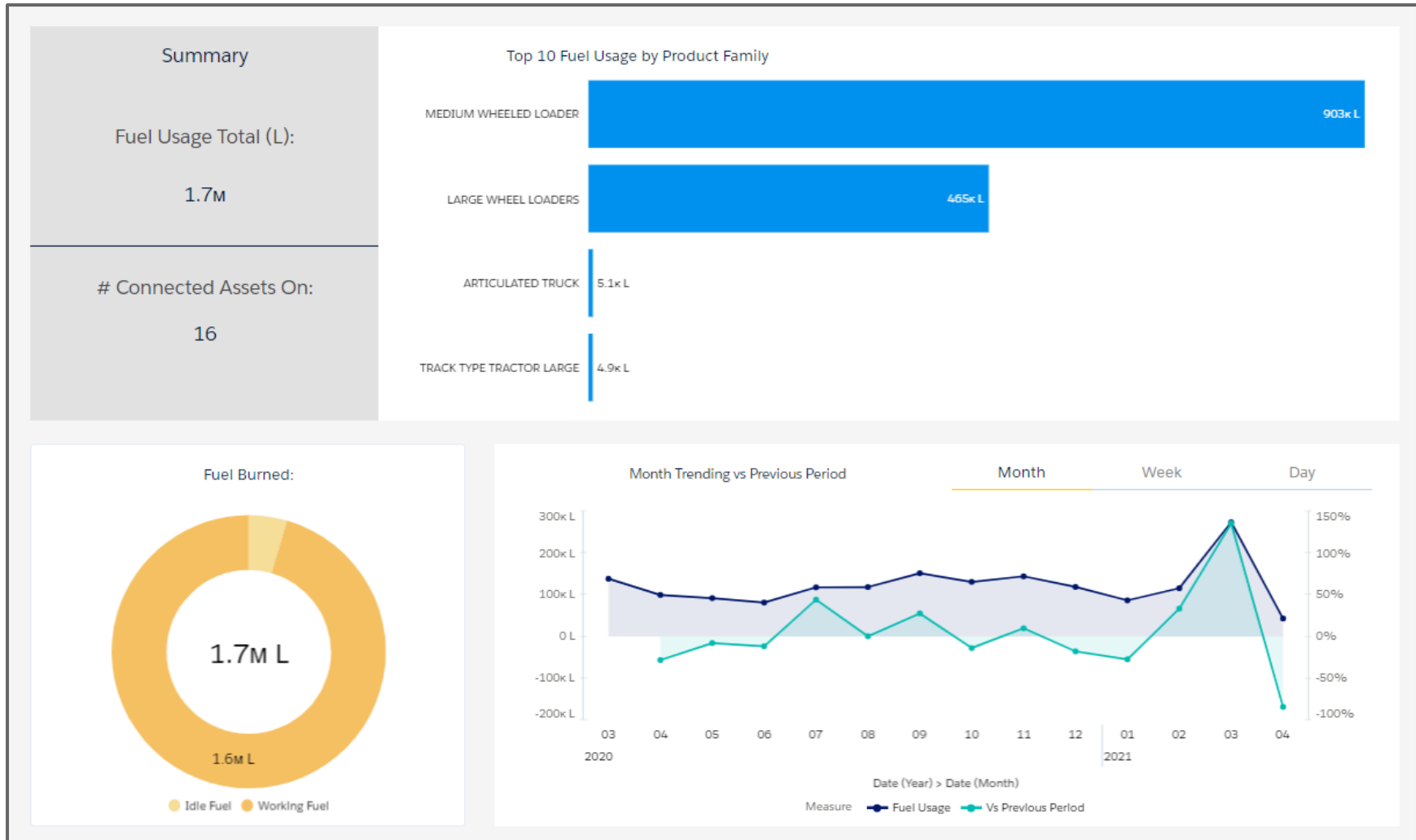
How well is your fleet performing - Current vs Previous Month

Metrics details

Product Family	Model Description	Serial Number	Asset ID	Asset Utilization	Fuel Usage	Critical Faults
EXCAVATORS LARGE	336FL TRACK EXCAVATORS			59.8%	28,600.1 L	0
				0%	0 L	0
	349D TRACK EXCAVATORS			54.62%	18,550.8 L	0
				64.89%	109,023.3 L	0
EXCAVATORS SMALL	315FLCR TRACK EXCAVATORS			53.13%	3,876.2 L	0
MEDIUM WHEELED LOADERS	050M WHEELED LOADERS	FMR02561	A450120	52.07%	5,102.7 L	1

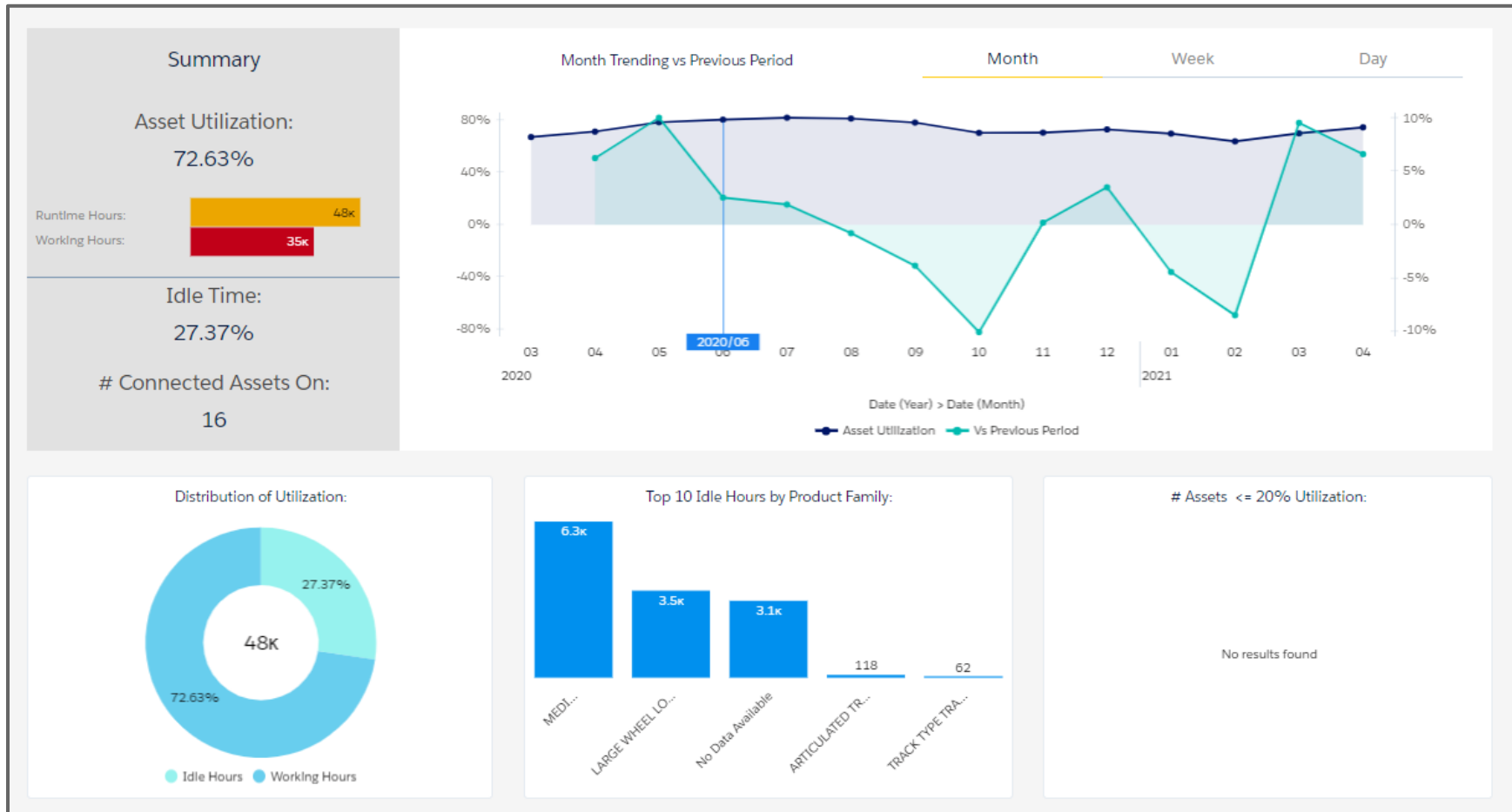
Fuel Usage Dashboard:

A deeper look at the details around fuel consumption. Again, can be filtered by *Month*, *Week*, or *Day*, or by any of the categories using the top-of-screen dropdowns.



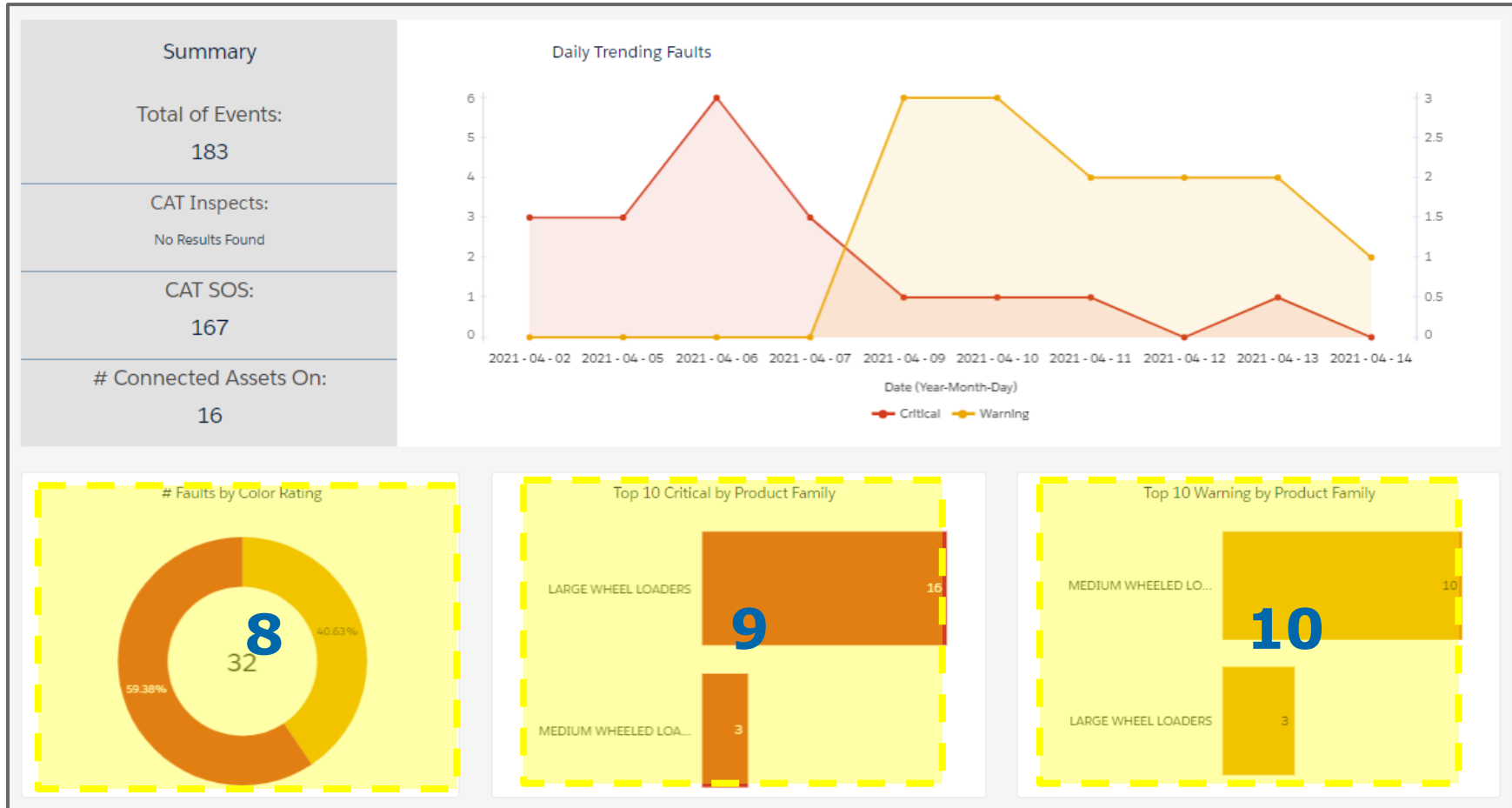
Asset Utilization Dashboard:

A closer look at details like idle time and total utilization compared to *yesterday, last week, last month*.



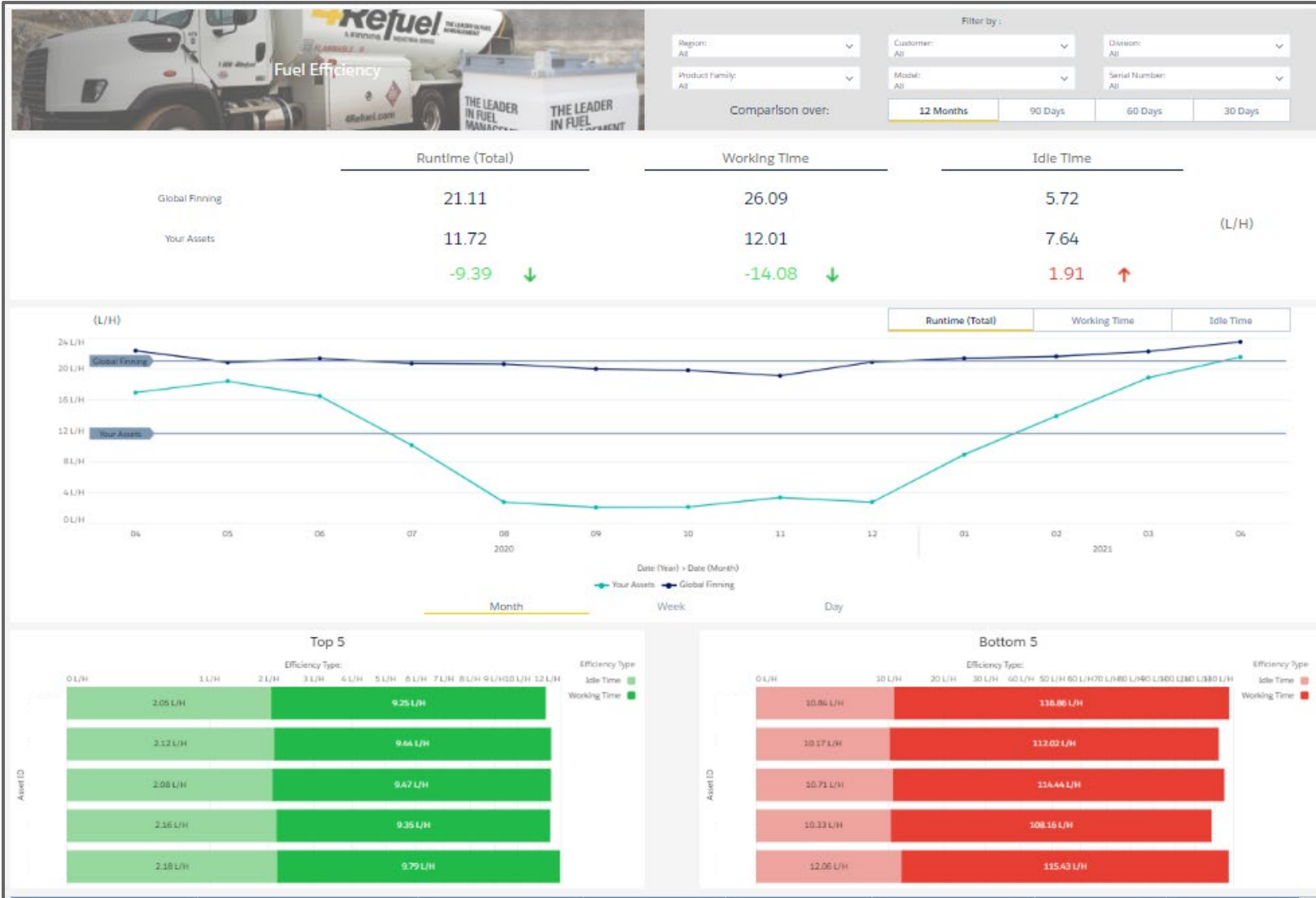
Fault Code Dashboard:

Spot the troublemakers with this tab. Click on any of the charts (boxes 8, 9, 10) to break it down by *product family* or *alert severity*.



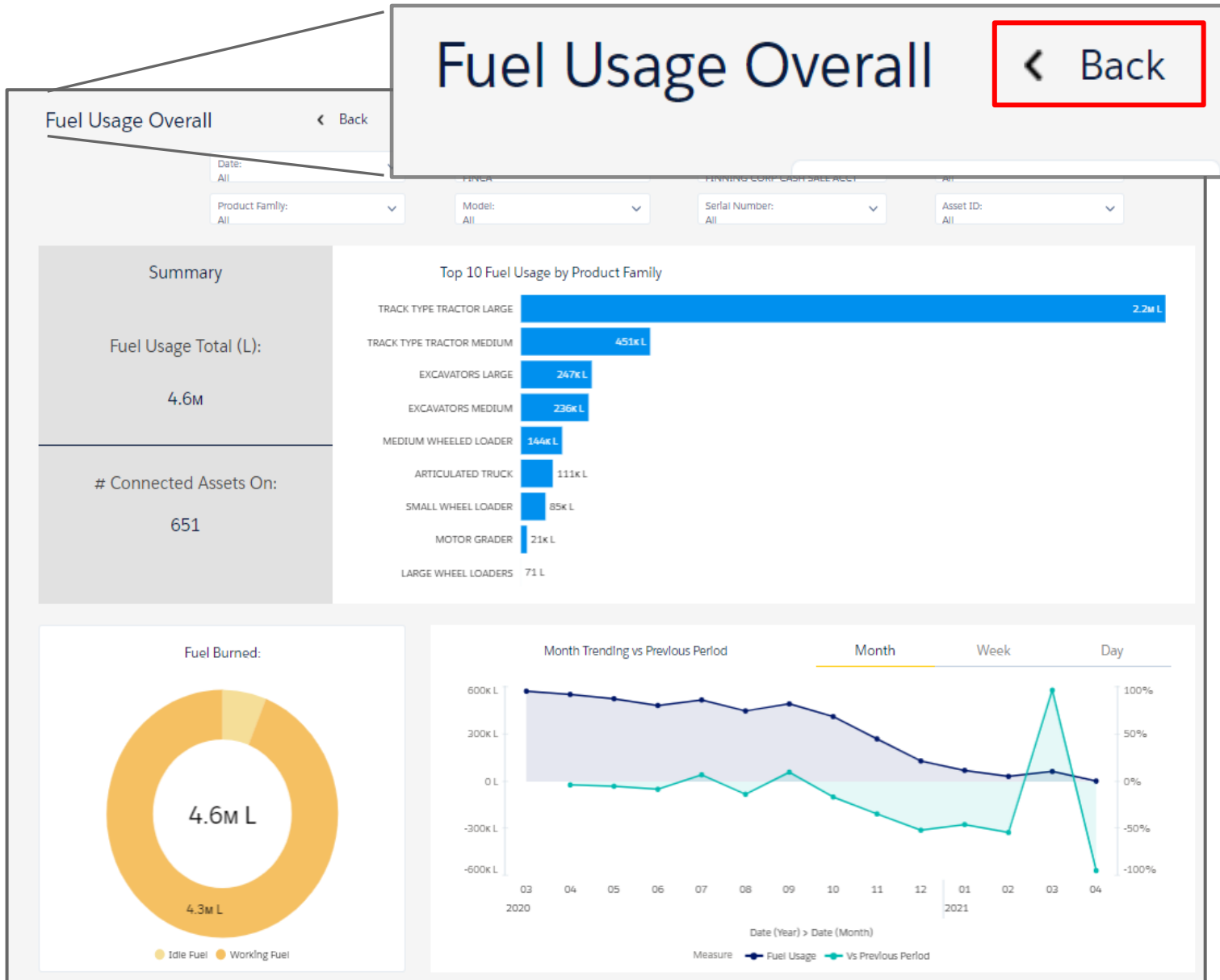
Fuel Efficiency Dashboard:

A deep dive into fleet health, based on fuel efficiency. Compare sites, product groups, or individual assets against the entire Finning population. No direct customer-customer info is shared.




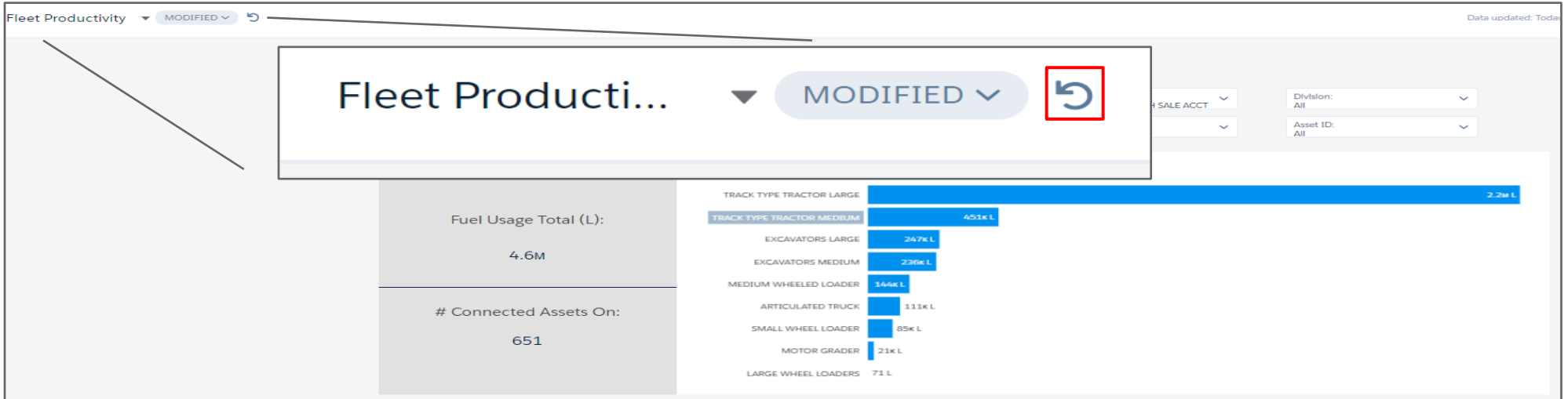
Quick Tip #1:

When working in a detail section, like Fuel Usage, etc. the "Back" button will take you back to the previous page.



Quick Tip #2:

The "MODIFIED" button is a quick check to see if you have any filters applied to the report. Hit the  icon to reset all fields.

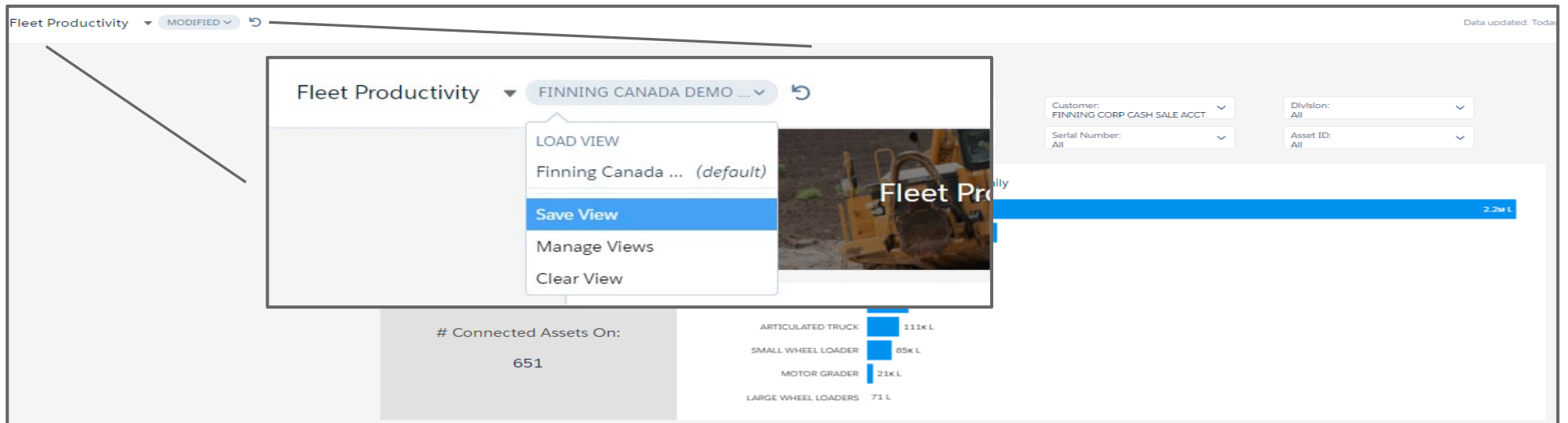


The screenshot shows the 'Fleet Productivity' dashboard. At the top left, there is a 'Fleet Productivity' dropdown menu and a 'MODIFIED' button with a refresh icon. A red box highlights the 'MODIFIED' button and the refresh icon. Below this, there are two summary cards: 'Fuel Usage Total (L): 4.6M' and '# Connected Assets On: 651'. To the right, there is a horizontal bar chart showing fuel usage for various equipment types. The chart data is as follows:

Equipment Type	Fuel Usage (L)
TRACK TYPE TRACTOR LARGE	2.2M L
TRACK TYPE TRACTOR MEDIUM	451k L
EXCAVATORS LARGE	247k L
EXCAVATORS MEDIUM	236k L
MEDIUM WHEELED LOADER	146k L
ARTICULATED TRUCK	111k L
SMALL WHEEL LOADER	85k L
MOTOR GRADER	21k L
LARGE WHEEL LOADERS	71 L

Quick Tip #3:

Don't want to apply the same filters every time you log in? Click MODIFIED>Save View and follow the steps to create different views.



The screenshot shows the 'Fleet Productivity' dashboard with the 'MODIFIED' dropdown menu open. The menu options are: 'LOAD VIEW', 'Finning Canada ... (default)', 'Save View', 'Manage Views', and 'Clear View'. The 'Save View' option is highlighted in blue. The dashboard also shows the '# Connected Assets On: 651' card and the fuel usage bar chart. The chart data is as follows:

Equipment Type	Fuel Usage (L)
ARTICULATED TRUCK	111k L
SMALL WHEEL LOADER	85k L
MOTOR GRADER	21k L
LARGE WHEEL LOADERS	71 L